

Equity Market

- ❖ Sensex gained 307 points to end at 34,287
- ❖ Index VIX declined 3.94% to 28.68
- ❖ Nifty P/E at 23.91, Nifty Midcap 100 P/E at 20.86

S&P CNX Nifty - 200 DMA



Nifty Equity Benchmark Indices

Index	Current Value	%chg	52 wkhigh	52 wklow
Nifty 50	10142.2	1.13	12430.5	7511.1
Nifty Mid cap 100	14158.1	1.76	18495.9	10750.0
Nifty Small cap 100	4423.1	3.38	6485.1	3202.9
Bank	21034.5	3.16	32613.1	16116.3
Auto	6628.8	1.80	8501.2	4452.2
FMCG	29542.0	-0.27	32644.9	22699.1
Pharma	10081.3	0.03	10234.8	6242.9
Realty	202.0	2.36	336.4	165.4

Factors driving the market

- ❖ Market edged higher led by buying in financial, metal and auto stocks
- ❖ PSBs rally after SBI Q4 posted 4-fold jump in profit; Nifty PSU Bank index up 7%
- ❖ RIL hits new high as Abu Dhabi fund to buy 1.85% stake in Jio

Nifty Top Gainers/Losers

Index	Value	52 wkhigh	52 wklow
Top Gainers			
Tata Motors	112.0	201.7	63.5
SBI	189.3	373.8	149.5
Bharti Infratel	237.2	296.5	120.1
Top Losers			
TCS	2053.0	2296.2	1506.1
HUL	2087.1	2614.3	1659.1
Bajaj Auto	2779.0	3315.2	1788.7

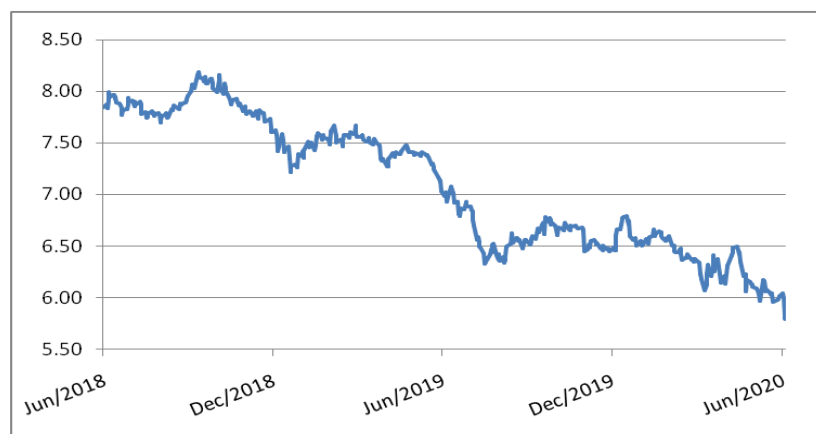
Equity FPI Inflows

Date	Rs Crore		
	Gross Purchases	Gross Sales	Net Investments
05-Jun-20	8380.6	5756.4	2624.2
04-Jun-20	10111.1	7949.2	2162.0
03-Jun-20	12567.1	4676.9	7890.2
Total May-2020	130298.5	115729.8	14568.8
Total Apr-2020	120697.5	127581.1	(6883.6)
Total 2019	1437559.6	1336438.9	101120.8

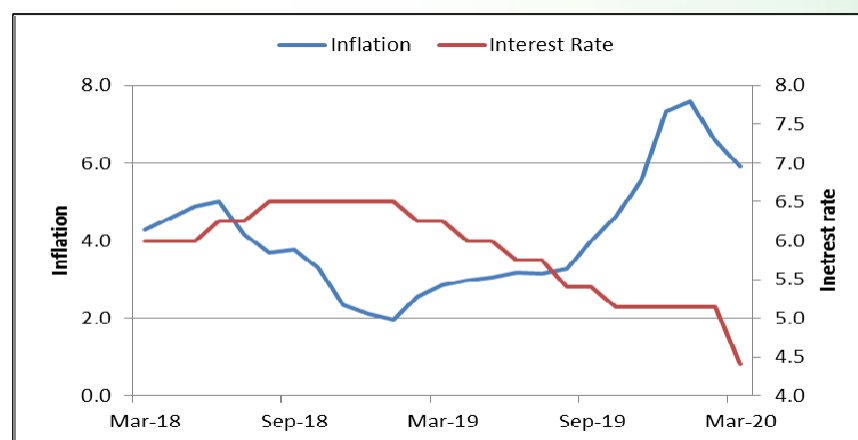
Debt Market

- ❖ Bank credit growth plunges 50% in fortnight to May 22
- ❖ Bank NPAs may worsen to 11.6 pc by end of this fiscal due to coronavirus pandemic: ICRA
- ❖ Banks, NBFCs, fintech firms rush to register for ₹3 lakh crore MSME guaranteed loan scheme
- ❖ Tata Steel to raise Rs 400 crore through NCDs
- ❖ India's retail, SME loan quality may deteriorate: Moody; these loans account for 44 per cent of the total loans

10-year G-sec yield



Inflation vs. Interest rate



Debt FPI Inflows

Debt Watch	Percent
Call rate	0.96
Repo rate	4.00
10 Yr Gsec yield	5.82
1-mth CP rate	3.13
3-mth CP rate	6.25
6-mth CP rate	5.00
1 Yr CP rate	5.58
1-mth CD rate	3.45
3-mth CD rate	3.50
6-mth CD rate	3.82
1 Yr CD rate	4.21

Auctions / Money Market Operation		
Date	Description	Amount(Cr)
Jun-08	G-sec auction	--
Jun-08	Total repo	--
Jun-08	Total reverse repo	6,49,610
Jun-08	Marginal standing facility	10
Jun-08	GOI surplus cash balance with RBI	--

Date	Rs Crore		
	Gross Purchases	Gross Sales	Net Investments
05-Jun-20	655.6	1308.8	(653.2)
04-Jun-20	469.5	1434.2	(964.8)
03-Jun-20	832.3	721.8	110.5
Total May-2020	16020.9	38955.9	(22935.0)
Total Apr-2020	16729.7	29281.3	(12551.7)
Total 2019	392458.9	366578.5	25880.4

Debt Fund Benchmark Indices

Market Indices	1 M (%)	1 Yr (%)	3 Yr (%)	5 Yr (%)
Crisil Composite Bond Fund Index	1.51	12.91	8.53	9.26
Crisil Short Term Bond Fund Index	1.42	10.37	8.12	8.39
Crisil ST Debt Hybrid 75+25 Index	3.58	5.07	7.07	8.22
Crisil Liquid Fund Index	0.43	5.97	6.86	7.08

Macro

- ❖ PSBs disburse half of the sanctioned credit guarantee scheme loans
- ❖ Rail freight traffic drops 28% in April-May amid Covid-19 lockdown
- ❖ Centre considering extending cash support schemes for poor beyond June
- ❖ Monetising fiscal deficit via secondary OMOs right way: Uday Kotak
- ❖ India's steel demand likely to fall by 18% in 2020, Worldsteel report

	Q3 FY2020(%)	Q2 FY2020(%)	Q3 FY2019(%)
GDP growth	4.7	4.5	6.6

Commodity Prices				
	Current	Week ago	Month ago	Year ago
Brent crude(\$/bbl)	41.94	37.84	30.97	63.29
Gold (RS/10 gms)	--	--	40,989	31,643

	Mar - 20 (%)	Feb - 20 (%)	Year ago (%) (Mar - 19)
CPI	5.84	6.58	2.86
WPI	1.00	2.26	3.10
Core Sector Output	-6.50	5.50	5.80
IIP	-16.70	4.50	-0.10

Global market trends

- ❖ Wall Street's major averages rallied, buoyed by better-than-anticipated US employment data
- ❖ China's exports dip 3.3%, imports shrink 16.7% in May
- ❖ OPEC, Russia to extend record oil cuts until end of July: Draft deal
- ❖ Singapore may take years to recover from effects of Covid-19: Deputy PM
- ❖ Saudi Arabia's oil exports plunge \$11 billion in first quarter

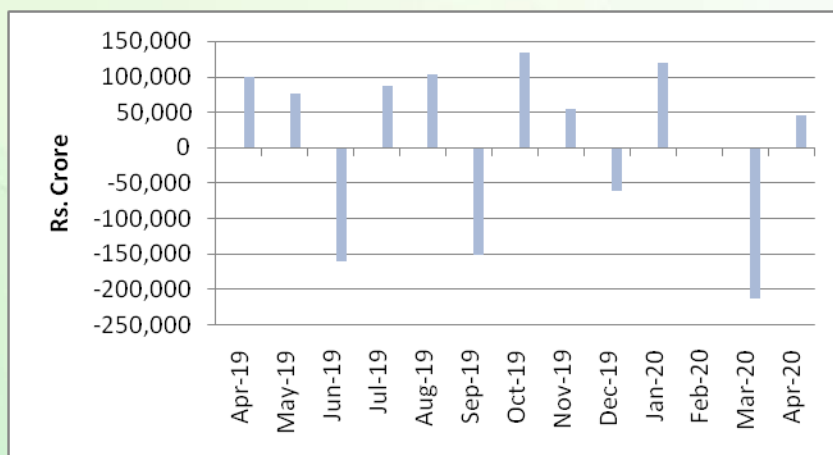
INR vs Global currency		
	Current	Prev close
USD	75.57	75.59
GBP	96.04	96.00
Euro	85.32	85.36
Yen	0.691	0.691
Yuan	10.67	10.67

Global equity benchmark indices returns(%)				
Benchmark	1 Day	1 Week	1 Month	1 Year
FTSE 100	2.25	6.71	10.85	-10.19
Hang Seng	1.66	7.88	3.78	-7.90
Nikkei 225	0.74	4.51	16.54	10.05
S&P 500	2.62	4.91	11.35	13.01
Shanghai Composite	0.40	2.75	2.47	2.42

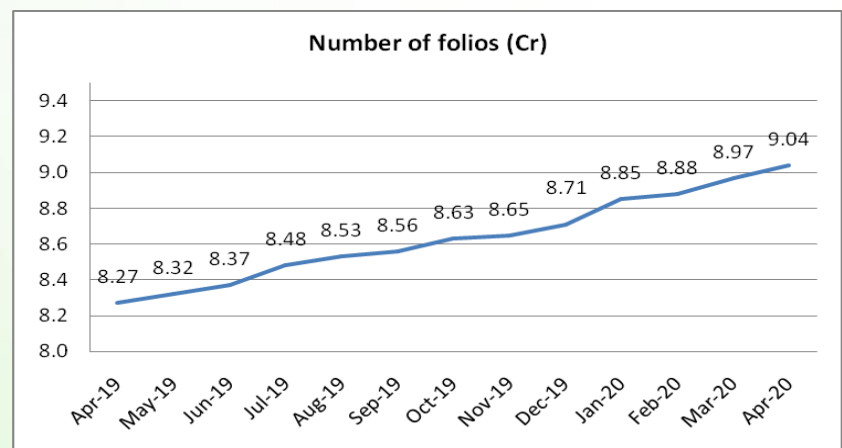
Mutual Fund Roundup

- ❖ Mutual funds apply for new funds to take advantage of market recovery
- ❖ Sebi orders probe into dealings of debt funds shut by Franklin
- ❖ MFs invest Rs 1,230 cr in equities during lockdown
- ❖ Three-day voting window for wound-up schemes to open on June 9: Franklin Templeton MF

Mutual fund inflows



Mutual fund folio growth



(Data source: NSE, NSDL, FIMMDA, investing.com, tradingeconomics.com, fx-rate.net, ACEMF, AMFI, RBI, equitymaster.com)

(News source: Economic Times, Business Standard)