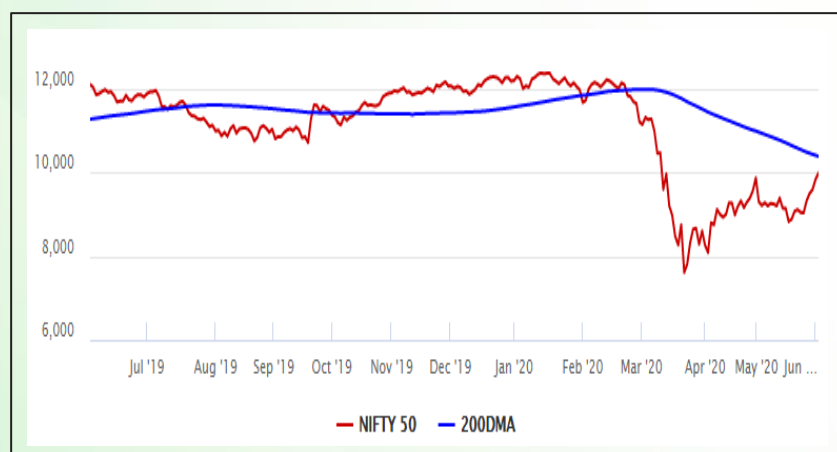


Equity Market

- ❖ Sensex takes winning run to 5th day, rallies 522 points to 33,826, Nifty just short of 10,000 mark
- ❖ Index VIX declines 2.43% to 29.99
- ❖ Nifty P/E at 23.31, Nifty Midcap 100 P/E at 20.35

S&P CNX Nifty - 200 DMA



Nifty Equity Benchmark Indices

Index	Current Value	%chg	52 wkhigh	52 wklow
Nifty 50	9979.1	1.56	12430.5	7511.1
Nifty Mid cap 100	13870.4	1.36	18495.9	10750.0
Nifty Small cap 100	4228.7	2.36	6485.1	3202.9
Bank	20530.2	2.86	32613.1	16116.3
Auto	6471.3	0.81	8501.2	4452.2
FMCG	29359.9	-0.72	32644.9	22699.1
Pharma	9833.6	0.32	10047.3	6242.9
Realty	194.8	4.93	336.4	165.4

Factors driving the market

- ❖ PM address to India Inc that India will return to growth, along with strong global cues boosted sentiment
- ❖ Buying in financial counters such as HDFC twins, Bajaj Finance, Axis Bank lead the rally
- ❖ Tata Motors share price rises 8% after company resumes operations at all plant

Nifty Top Gainers/Losers

Index	Value	52 wkhigh	52 wklow
Top Gainers			
Bajaj Finserv	5216.0	9950.0	3985.3
ZEEL	202.8	405.2	114.0
Bajaj Finance	2337.0	4923.4	1783.0
Top Losers			
Coal India	143.7	271.5	119.2
Maruti	5685.0	7758.7	4001.1
BPCL	341.5	549.0	252.0

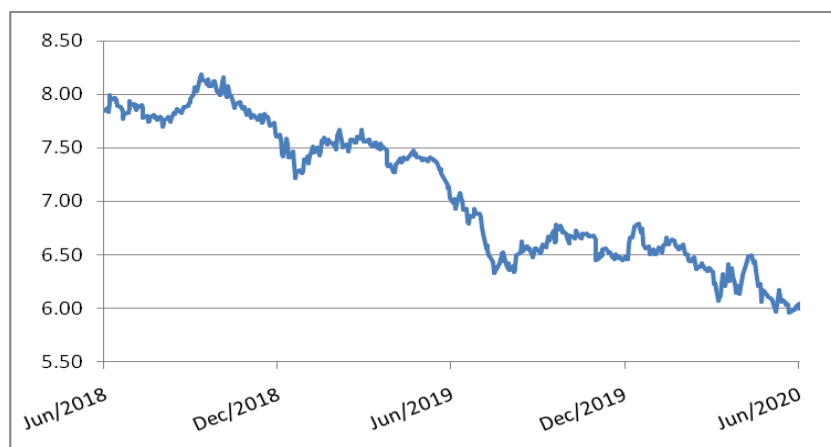
Equity FPI Inflows

Date	Rs Crore		
	Gross Purchases	Gross Sales	Net Investments
02-Jun-20	13182.2	6249.1	6933.1
01-Jun-20	25171.8	23967.1	1204.7
29-May-20	8835.6	6840.0	1996.3
Total May-2020	130298.5	115729.8	14568.8
Total Apr-2020	120697.5	127581.1	(6883.6)
Total 2019	1437559.6	1336438.9	101120.8

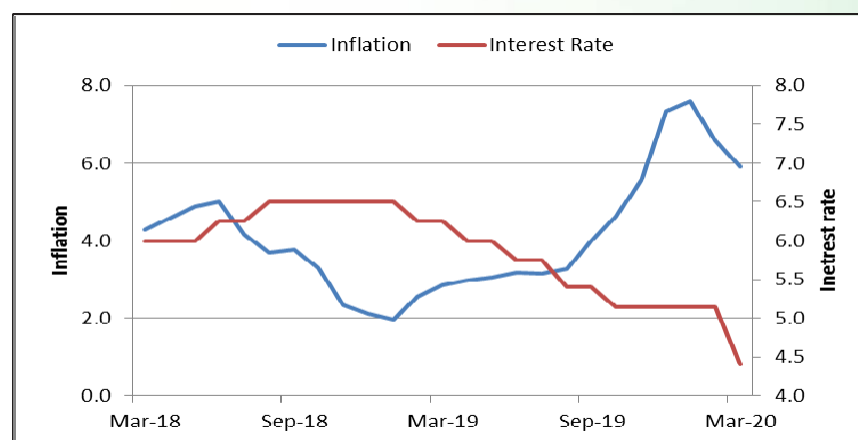
Debt Market

- ❖ Banks seek RBI nod to recast Rs 3 lakh crore loans minus downgrade
- ❖ PSBs may report weak loan growth, NII amid Covid-19 crisis in Q4: Analysts
- ❖ Raymond Ltd approves issue of NCDs aggregating Rs. 80 crore
- ❖ Blue Star board approves plan to issue NCDs of Rs 300 crore
- ❖ Non-food credit growth contracted by 1.2 per cent, or Rs 1.10 lakh crore to Rs 91 lakh crore in April

10-year G-sec yield



Inflation vs. Interest rate



Debt FPI Inflows

Debt Watch	Percent
Call rate	3.14
Repo rate	4.00
10 Yr Gsec yield	6.00
1-mth CP rate	3.45
3-mth CP rate	4.60
6-mth CP rate	4.65
1 Yr CP rate	5.58
1-mth CD rate	3.40
3-mth CD rate	3.45
6-mth CD rate	3.82
1 Yr CD rate	4.10

Auctions / Money Market Operation		
Date	Description	Amount(Cr)
Jun-03	G-sec auction	--
Jun-03	Total repo	--
Jun-03	Total reverse repo	6,85,893
Jun-03	Marginal standing facility	--
Jun-03	GOI surplus cash balance with RBI	--

Date	Rs Crore		
	Gross Purchases	Gross Sales	Net Investments
02-Jun-20	1402.2	1229.1	173.2
01-Jun-20	1100.9	955.0	145.9
29-May-20	605.2	996.4	(391.2)
Total May-2020	16020.9	38955.9	(22935.0)
Total Apr-2020	16729.7	29281.3	(12551.7)
Total 2019	392458.9	366578.5	25880.4

Debt Fund Benchmark Indices

Market Indices	1 M (%)	1 Yr (%)	3 Yr (%)	5 Yr (%)
Crisil Composite Bond Fund Index	1.95	12.89	8.49	9.19
Crisil Short Term Bond Fund Index	1.56	10.33	8.09	8.37
Crisil ST Debt Hybrid 75+25 Index	1.58	4.78	6.92	8.04
Crisil Liquid Fund Index	0.45	6.01	6.87	7.09

Macro

- ❖ Nearly 70% listed firms' turnover below new MSME threshold due to lockdown
- ❖ PM Modi says growth will return, more reforms in the works
- ❖ DoT plans to transform India into manufacturing, export hub of 5G gear
- ❖ India plans \$6.7 boost to electronics manufacturing
- ❖ Moody's downgrades 8 Indian firms and 3 banks including Infosys, SBI, HDFC Bank, TCS and ONGC

	Q3 FY2020(%)	Q2 FY2020(%)	Q3 FY2019(%)
GDP growth	4.7	4.5	6.6

Commodity Prices				
	Current	Week ago	Month ago	Year ago
Brent crude(\$/bbl)	39.6	36.17	26.44	61.28
Gold (RS/10 gms)	--	--	40,989	31,643

	Mar - 20 (%)	Feb - 20 (%)	Year ago (%) (Mar - 19)
CPI	5.84	6.58	2.86
WPI	1.00	2.26	3.10
Core Sector Output	-6.50	5.50	5.80
IIP	-16.70	4.50	-0.10

Global market trends

- ❖ Covid-19 could trim US GDP by \$15.7 trn in next 10 yrs, says budget office
- ❖ Covid-19 can push 60 million into poverty, adopt comprehensive policies: World Bank
- ❖ Gulf countries to experience worst economic crisis in history: IIF
- ❖ China to construct 1,124-megawatt power project in PoK under CPEC
- ❖ Greece clarifies Covid-19 policy, to welcome tourists from all nations

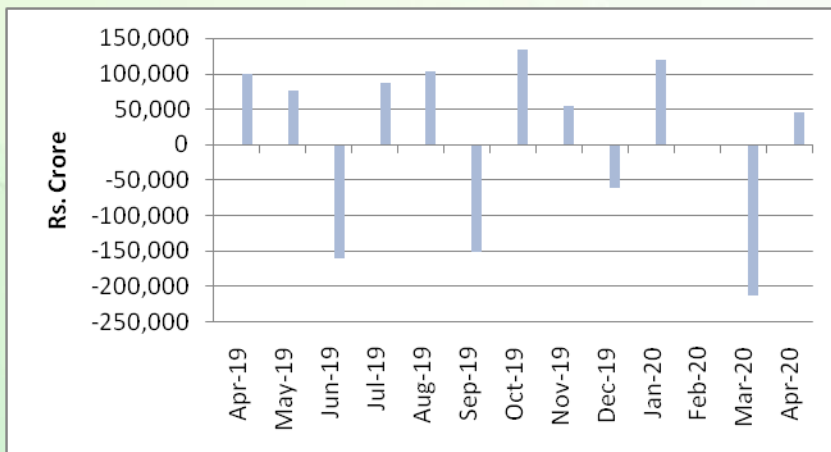
INR vs Global currency		
	Current	Prev close
USD	75.03	75.05
GBP	94.42	94.37
Euro	84.08	83.96
Yen	0.691	0.692
Yuan	10.55	10.56

Global equity benchmark indices returns(%)				
Benchmark	1 Day	1 Week	1 Month	1 Year
FTSE 100	0.87	2.51	7.93	-13.15
Hang Seng	1.07	2.61	-2.63	-10.80
Nikkei 225	1.19	4.96	13.79	8.37
S&P 500	0.82	2.98	8.84	11.95
Shanghai Composite	0.20	2.63	2.14	0.78

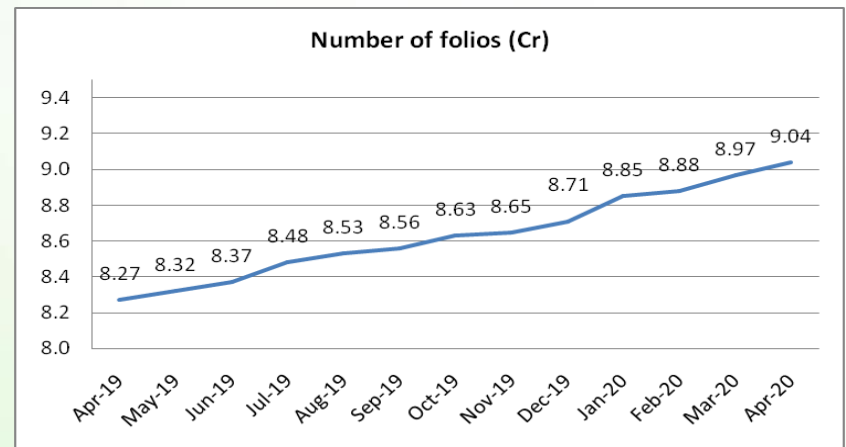
Mutual Fund Roundup

- ❖ Sebi orders probe into dealings of debt funds shut by Franklin
- ❖ MFs invest Rs 1,230 cr in equities during lockdown
- ❖ Three-day voting window for wound-up schemes to open on June 9: Franklin Templeton MF
- ❖ Franklin Templeton appoints Kotak Mahindra Bank as independent advisor for monetizing potfolios of schemes

Mutual fund inflows



Mutual fund folio growth



(Data source: NSE, NSDL, FIMMDA, investing.com, tradingeconomics.com, fx-rate.net, ACEMF, AMFI, RBI, equitymaster.com)

(News source: Economic Times, Business Standard)