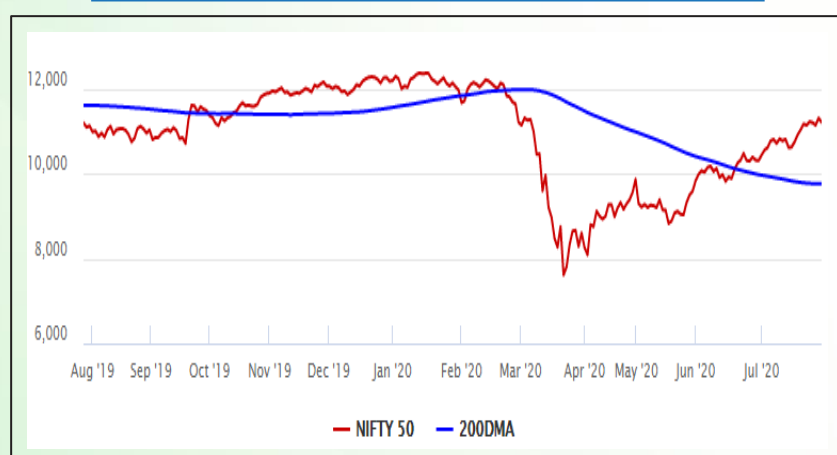


Equity Market

- ❖ Sensex down 422 points to 38,071
- ❖ Index VIX rises 1.92% to 24.11
- ❖ Nifty P/E at 29.59, Nifty Midcap 100 P/E at 119.28

S&P CNX Nifty - 200 DMA



Nifty Equity Benchmark Indices

Index	Current Value	% chg	52 wk high	52 wk low
Nifty 50	11202.9	-0.86	12430.5	7511.1
Nifty Mid cap 100	15535.1	0.48	18495.9	10750.0
Nifty Small cap 100	5022.7	-0.09	6401.1	3202.9
Bank	22076.6	-0.13	32613.1	16116.3
Auto	7330.3	-1.17	8501.2	4452.2
FMCG	30948.5	0.12	32644.9	22699.1
Pharma	10441.2	3.09	10497.2	6242.9
Realty	198.3	0.03	336.4	160.9

Factors driving the market

- ❖ Reliance drops 4% as investors booked profit after an eight-day rally; Nestle India slips 3% post Q1 nos
- ❖ Maruti Suzuki skid 1.5% as it logged its first-ever quarterly loss since its listing in 2003
- ❖ Dr Reddy's Lab hit a record high on reporting better-than-expected profit in June quarter

Nifty Top Gainers/Losers

Index	Value	52 wk high	52 wk low
Top Gainers			
Dr Reddy's Lab	4305.7	4336.0	2351.2
Tata Steel	372.9	506.0	250.9
IndusInd Bank	543.0	1596.6	235.6
Top Losers			
Reliance	2092.0	2198.8	867.0
M&M	603.8	625.8	245.4
HCL Tech	694.4	716.1	375.3

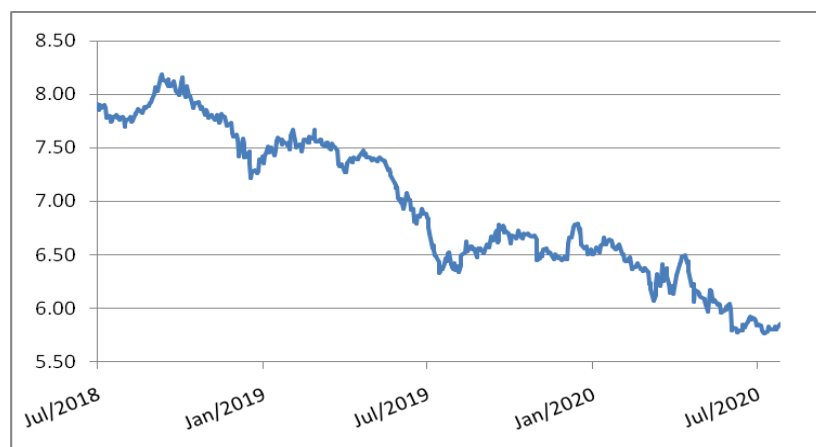
Equity FPI Inflows

Date	Rs Crore		
	Gross Purchases	Gross Sales	Net Investments
29-Jul-20	5811.0	5627.7	183.3
28-Jul-20	4603.0	4563.6	39.5
27-Jul-20	9141.9	5269.1	3872.9
Total Jun-2020	170846.4	149014.5	21831.6
Total May-2020	130298.5	115729.8	14568.8
Total 2019	1437559.6	1336438.9	101120.8

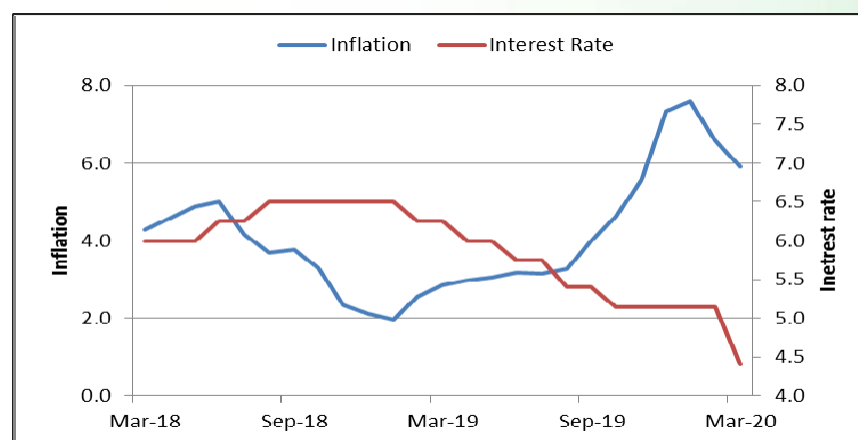
Debt Market

- ❖ Adani Ports SEZ raises \$750 million through an offshore bond issue
- ❖ ONGC to raise Rs 5000 crore through NCDs at the interest rate of 5.25% payable annually
- ❖ NTPC to raise Rs 1,000 cr via bonds on July 31 through private placement basis
- ❖ Bharat Forge to raise Rs 500 cr via NCDs on a private placement basis
- ❖ Manappuram Fin board approves plan to raise Rs 500 cr via bonds

10-year G-sec yield



Inflation vs. Interest rate



Debt FPI Inflows

Debt Watch	Percent
Call rate	3.17
Repo rate	4.00
10 Yr Gsec yield	5.84
1-mth CP rate	3.30
3-mth CP rate	3.70
6-mth CP rate	3.97
1 Yr CP rate	4.10
1-mth CD rate	3.22
3-mth CD rate	3.38
6-mth CD rate	3.55
1 Yr CD rate	3.92

Auctions / Money Market Operation		
Date	Description	Amount(Cr)
Jul-30	G-sec auction	--
Jul-30	Total repo	--
Jul-30	Total reverse repo	6,07,150
Jul-30	Marginal standing facility	4
Jul-30	GOI surplus cash balance with RBI	--

Date	Rs Crore		
	Gross Purchases	Gross Sales	Net Investments
29-Jul-20	478.1	724.9	(246.8)
28-Jul-20	820.6	805.8	14.8
27-Jul-20	743.2	951.2	(207.4)
Total Jun-2020	21934.6	23479.5	(1545.0)
Total May-2020	16020.9	38955.9	(22935.0)
Total 2019	392458.9	366578.5	25880.4

Debt Fund Benchmark Indices

Market Indices	1 M (%)	1 Yr (%)	3 Yr (%)	5 Yr (%)
Crisil Composite Bond Fund Index	1.34	12.40	8.65	9.48
Crisil Short Term Bond Fund Index	0.98	11.18	8.41	8.60
Crisil ST Debt Hybrid 75+25 Index	2.67	10.14	7.79	8.68
Crisil Liquid Fund Index	0.32	5.56	6.72	6.96

Macro

- ❖ Govt extends deadline for filing income tax returns for FY19 till Sept 30
- ❖ India has more scope for policy support despite limited fiscal space: IMF
- ❖ WTO sets up 2 more dispute panels against India's import duties
- ❖ AI expected to boost India's annual growth by 1.3 pc, says Niti paper
- ❖ ADB approves USD 3 million grant to India to combat COVID-19

	Q3 FY2020(%)	Q2 FY2020(%)	Q3 FY2019(%)
GDP growth	4.7	4.5	6.6

Commodity Prices				
	Current	Week ago	Month ago	Year ago
Brent crude(\$/bbl)	43.75	44.29	41.71	63.71
Gold (RS/10 gms)	52,853	50,005	48,376	34,730

	May - 20 (%)	Apr - 20 (%)	Year ago (%) (May - 19)
CPI (Food)	9.28%	--	3.05
WPI	-3.21	--	2.45
Core Sector Output	-23.40	-38.12	3.80
IIP	-34.70	-55.50	3.10

Global market trends

- ❖ Wall Street adds to gains after Fed pledges more support to US economy
- ❖ Fed pledges to keep rates near zero, says recovery will depend on Covid-19
- ❖ Hong Kong economy shrinks 9% in latest quarter over Covid-19, security law
- ❖ Brazil coronavirus payout cuts extreme poverty to least in decades
- ❖ Oil gains on sharp US crude inventory drop; Covid-19 keeps surge in check

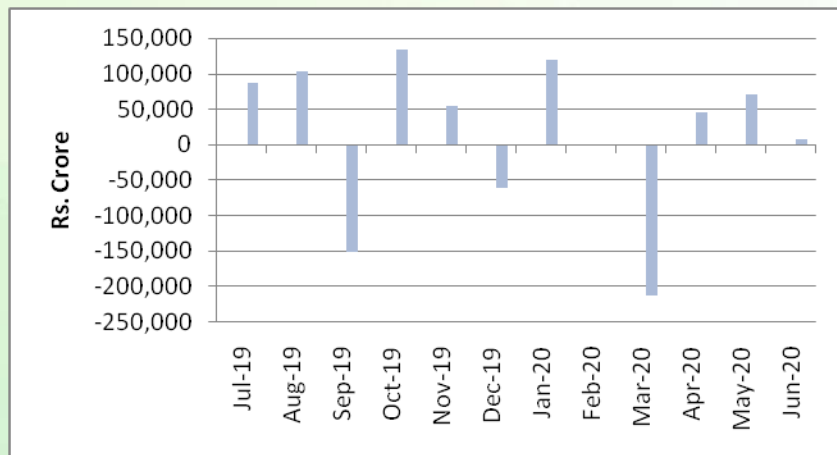
INR vs Global currency		
	Current	Prev close
USD	74.83	74.82
GBP	97.15	97.09
Euro	88.10	88.06
Yen	0.712	0.712
Yuan	10.69	10.69

Global equity benchmark indices returns(%)				
Benchmark	1 Day	1 Week	1 Month	1 Year
FTSE 100	0.04	-1.22	-1.51	-20.23
Hang Seng	0.45	-0.70	2.39	-11.47
Nikkei 225	-1.15	-1.56	1.83	3.61
S&P 500	1.24	-0.54	6.72	7.86
Shanghai Composite	2.06	-1.16	11.25	12.02

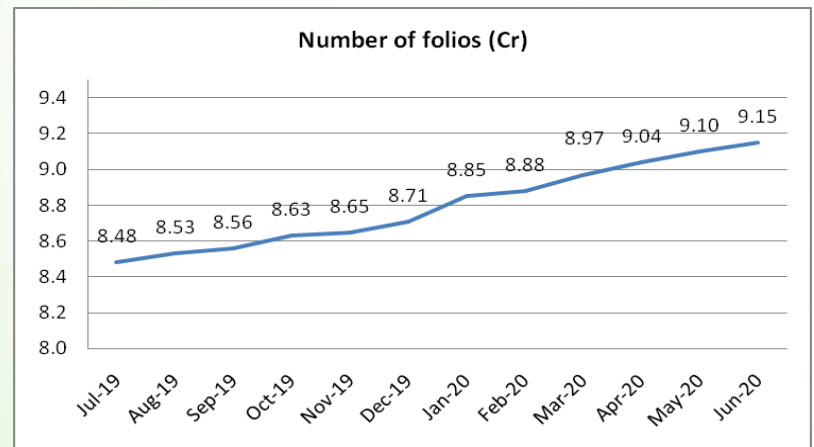
Mutual Fund Roundup

- ❖ Sebi mandates MFs to use RFQ platform for 10% of secondary transactions from October 1
- ❖ SEBI asks debt funds to disclose portfolio on fortnightly basis along with yield of the instrument
- ❖ PMO writes to DEA and Sebi for Covid-19 support fund for closed-ended debt schemes
- ❖ SEBI to rejig debt fund norms; regulator taking feedback from mutual fund industry

Mutual fund inflows



Mutual fund folio growth



(Data source: NSE, NSDL, FIMMDA, investing.com, tradingeconomics.com, fx-rate.net, ACEMF, AMFI, RBI, equitymaster.com)

(News source: Economic Times, Business Standard)