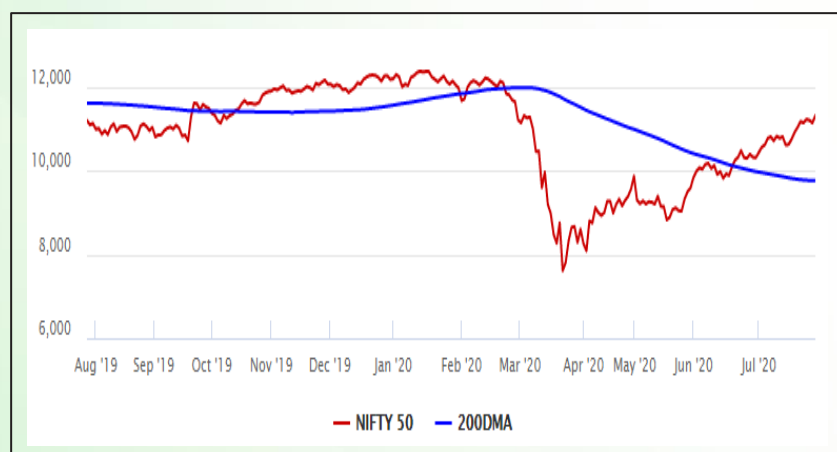


## Equity Market

- ❖ Sensex jumps 558 points to 38,493
- ❖ Index VIX declines 5.14% to 23.73
- ❖ Nifty P/E at 29.87, Nifty Midcap 100 P/E at 117.00

### S&P CNX Nifty - 200 DMA



### Nifty Equity Benchmark Indices

Index	Current Value	% chg	52 wk high	52 wk low
Nifty 50	11300.6	1.52	12430.5	7511.1
Nifty Mid cap 100	15460.1	0.89	18495.9	10750.0
Nifty Small cap 100	5027.2	1.36	6401.1	3202.9
Bank	22105.2	1.17	32613.1	16116.3
Auto	7416.9	3.21	8501.2	4452.2
FMCG	30910.9	0.30	32644.9	22699.1
Pharma	10128.1	0.66	10497.2	6242.9
Realty	198.3	1.61	336.4	160.9

## Factors driving the market

- ❖ Auto stocks gain on expectations of improved monthly sales number for the month of July
- ❖ UltraTech Cement, Tech Mahindra surge as Q1 earnings beat street estimates
- ❖ HDFC Life hits all-time high ahead of inclusion in Nifty50

### Nifty Top Gainers/Losers

Index	Value	52 wk high	52 wk low
<b>Top Gainers</b>			
Ultratech Cement	4131.1	4754.1	2910.0
Kotak Bank	1384.8	1740.0	1001.0
TCS	2310.2	2333.0	1506.1
<b>Top Losers</b>			
ICICI Bank	352.2	552.2	268.3
Bharti Infratel	191.1	296.5	120.1
Nestle India	17103.1	18370.0	11322.5

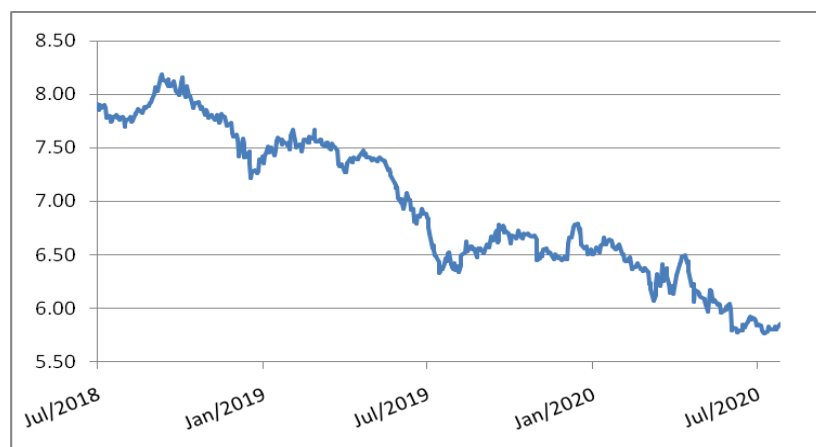
### Equity FPI Inflows

Date	Rs Crore		
	Gross Purchases	Gross Sales	Net Investments
28-Jul-20	4603.0	4563.6	39.5
27-Jul-20	9141.9	5269.1	3872.9
24-Jul-20	5785.2	3670.9	2114.4
Total Jun-2020	170846.4	149014.5	21831.6
Total May-2020	130298.5	115729.8	14568.8
Total 2019	1437559.6	1336438.9	101120.8

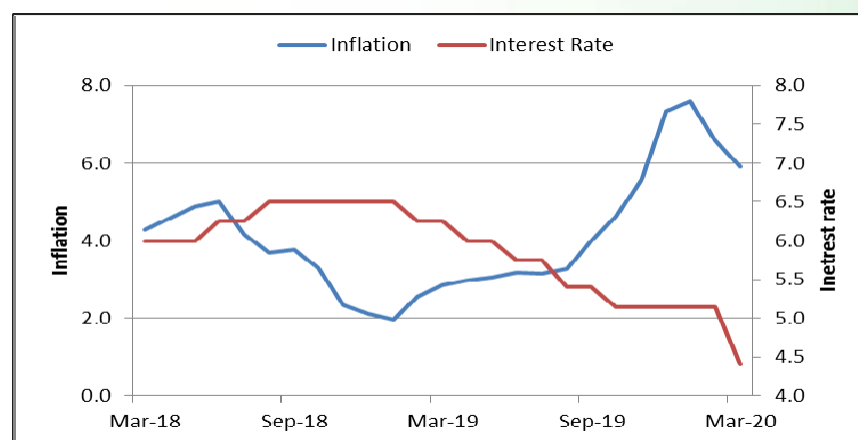
## Debt Market

- ❖ Manappuram Fin board approves plan to raise Rs 500 cr via bonds
- ❖ Don't Extend Moratorium, Deepak Parekh Urges RBI Governor
- ❖ Gross NPA of banks may rise to 12.5 per cent by March 2021: RBI Financial Stability Report
- ❖ JSW Steel board approves NCD issuance up to Rs 10,000 crore
- ❖ LTRO helped bring short-tenor NBFC bond spreads by over 200 bps: RBI Financial Stability Report

## 10-year G-sec yield



## Inflation vs. Interest rate



## Debt FPI Inflows

Debt Watch	Percent
Call rate	3.14
Repo rate	4.00
10 Yr Gsec yield	5.85
1-mth CP rate	3.30
3-mth CP rate	3.70
6-mth CP rate	3.97
1 Yr CP rate	4.10
1-mth CD rate	3.22
3-mth CD rate	3.45
6-mth CD rate	3.55
1 Yr CD rate	3.92

Auctions / Money Market Operation		
Date	Description	Amount(Cr)
Jul-29	G-sec auction	--
Jul-29	Total repo	--
Jul-29	Total reverse repo	5,94,180
Jul-29	Marginal standing facility	--
Jul-29	GOI surplus cash balance with RBI	--

Date	Rs Crore		
	Gross Purchases	Gross Sales	Net Investments
28-Jul-20	820.6	805.8	14.8
27-Jul-20	743.2	951.2	(207.4)
24-Jul-20	937.0	679.7	257.3
Total Jun-2020	21934.6	23479.5	(1545.0)
Total May-2020	16020.9	38955.9	(22935.0)
Total 2019	392458.9	366578.5	25880.4

## Debt Fund Benchmark Indices

Market Indices	1 M (%)	1 Yr (%)	3 Yr (%)	5 Yr (%)
Crisil Composite Bond Fund Index	1.39	12.74	8.64	9.48
Crisil Short Term Bond Fund Index	0.99	11.28	8.40	8.60
Crisil ST Debt Hybrid 75+25 Index	2.60	10.13	7.83	8.74
Crisil Liquid Fund Index	0.32	5.57	6.73	6.96

## Macro

- ❖ Railways staring at Rs 35,000-40,000 crore drop in earnings this fiscal
- ❖ Govt trying to attract FDI in infrastructure sector: Nitin Gadkari
- ❖ Insurance may get 'strategic sector' tag under new privatisation policy
- ❖ Job seekers confident about career progression as economy reboots: Survey
- ❖ Milk co-ops approach Centre for export sops to clear massive inventories

	Q3 FY2020(%)	Q2 FY2020(%)	Q3 FY2019(%)
GDP growth	4.7	4.5	6.6

Commodity Prices				
	Current	Week ago	Month ago	Year ago
Brent crude(\$/bbl)	43.22	44.32	41.71	63.18
Gold (RS/10 gms)	52,278	49,264	48,376	34,730

	May - 20 (%)	Apr - 20 (%)	Year ago (%) (May - 19)
CPI (Food)	9.28%	--	3.05
WPI	-3.21	--	2.45
Core Sector Output	-23.40	-38.12	3.80
IIP	-34.70	-55.50	3.10

## Global market trends

- ❖ Wall Street ends lower as stimulus plan underwhelms, mixed earnings weigh
- ❖ US consumer confidence tumbles in July as COVID-19 spreads
- ❖ Italy extends coronavirus state of emergency to October 15 to check spread
- ❖ Australian watchdog accuses Google of privacy breaches
- ❖ Europe's retail sector sees major shift as shoppers buy local due to Covid

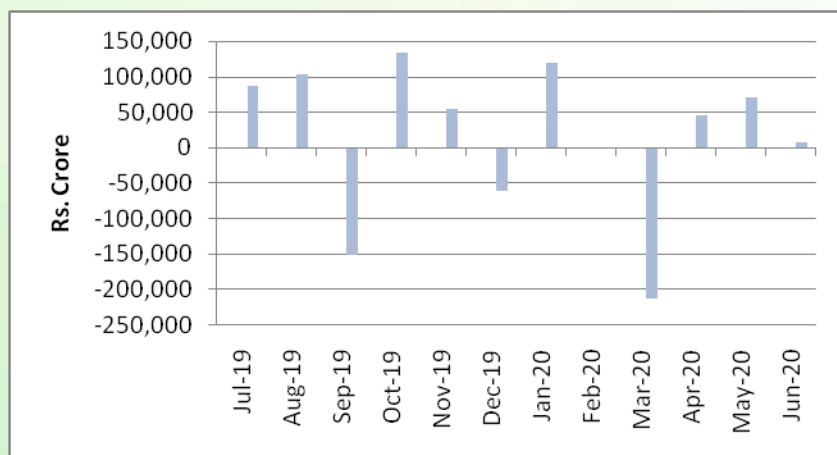
INR vs Global currency		
	Current	Prev close
USD	74.83	74.84
GBP	96.72	96.71
Euro	87.79	87.73
Yen	0.712	0.712
Yuan	10.69	10.69

Global equity benchmark indices returns(%)				
Benchmark	1 Day	1 Week	1 Month	1 Year
FTSE 100	0.40	-2.24	-0.49	-18.81
Hang Seng	0.69	-3.37	0.91	-12.77
Nikkei 225	-0.26	-0.99	0.65	4.61
S&P 500	-0.65	-1.19	6.96	6.36
Shanghai Composite	0.71	-2.80	8.34	9.63

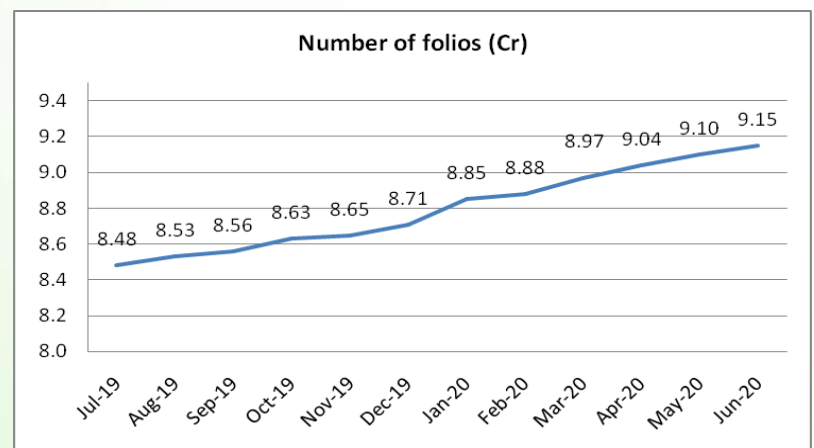
## Mutual Fund Roundup

- ❖ Sebi mandates MFs to use RFQ platform for 10% of secondary transactions from October 1
- ❖ SEBI asks debt funds to disclose portfolio on fortnightly basis along with yield of the instrument
- ❖ PMO writes to DEA and Sebi for Covid-19 support fund for closed-ended debt schemes
- ❖ SEBI to rejig debt fund norms; regulator taking feedback from mutual fund industry

### Mutual fund inflows



### Mutual fund folio growth



(Data source: NSE, NSDL, FIMMDA, investing.com, tradingeconomics.com, fx-rate.net, ACEMF, AMFI, RBI, equitymaster.com)

(News source: Economic Times, Business Standard)