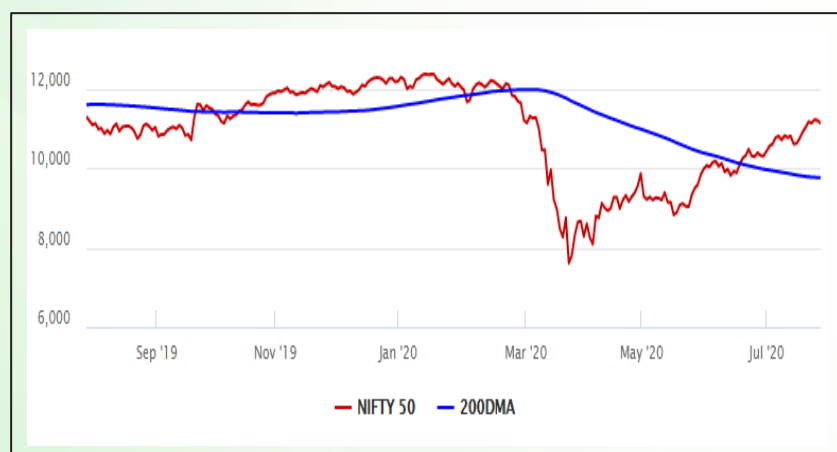


## Equity Market

- ❖ Sensex slips 194 points to 37,935
- ❖ Index VIX rises 2.11% to 25.02
- ❖ Nifty P/E at 29.18, Nifty Midcap 100 P/E at 116.61

### S&P CNX Nifty - 200 DMA



### Nifty Equity Benchmark Indices

Index	Current Value	% chg	52 wk high	52 wk low
Nifty 50	11131.8	-0.56	12430.5	7511.1
Nifty Mid cap 100	15323.8	-1.32	18495.9	10750.0
Nifty Small cap 100	4959.5	-0.60	6401.1	3202.9
Bank	21848.8	-3.59	32613.1	16116.3
Auto	7186.5	-0.45	8501.2	4452.2
FMCG	30819.8	-0.64	32644.9	22699.1
Pharma	10062.1	-1.72	10497.2	6242.9
Realty	195.1	-1.66	336.4	160.9

## Factors driving the market

- ❖ Financial stocks took a beating after RBI report said NPA ratio of banks may increase to 12.5% by March 2021
- ❖ HDFC Bank ended 3% lower after its MD and CEO Aditya Puri sold off nearly 95 per cent of his stake in the bank
- ❖ Asian Paints advanced nearly 4% on sharper than expected recovery and healthy commentary

### Nifty Top Gainers/Losers

Index	Value	52 wk high	52 wk low
<b>Top Gainers</b>			
Asian Paints	1772.6	1916.7	1431.2
HCL Tech	700.9	704.4	375.3
Infosys	947.2	955.5	509.3
<b>Top Losers</b>			
ICICI Bank	358.7	552.2	268.3
ZEEL	145.7	405.2	114.0
HDFC Bank	1080.0	1305.5	738.8

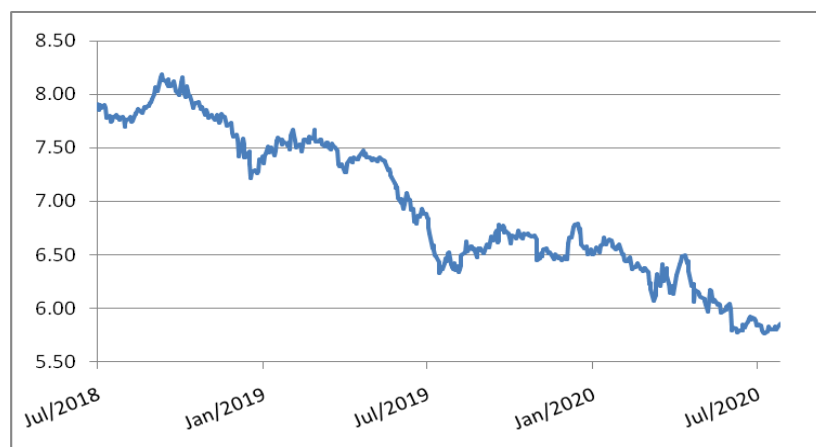
### Equity FPI Inflows

Date	Rs Crore		
	Gross Purchases	Gross Sales	Net Investments
27-Jul-20	9141.9	5269.1	3872.9
24-Jul-20	5785.2	3670.9	2114.4
23-Jul-20	6924.6	5185.2	1739.4
Total Jun-2020	170846.4	149014.5	21831.6
Total May-2020	130298.5	115729.8	14568.8
Total 2019	1437559.6	1336438.9	101120.8

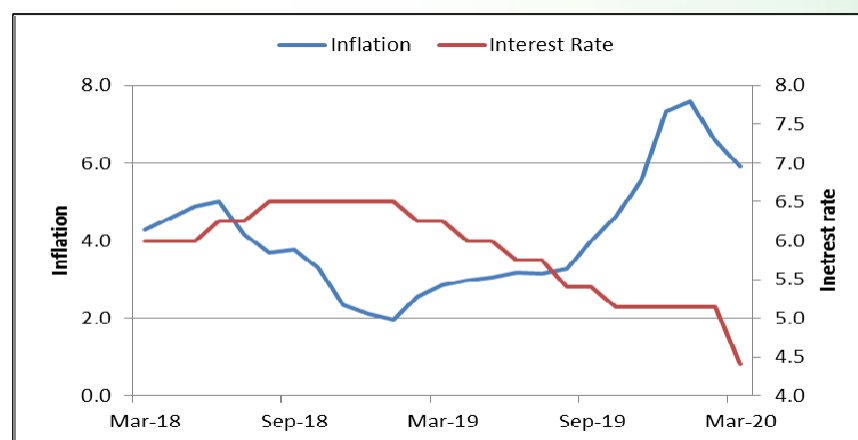
## Debt Market

- ❖ Don't Extend Moratorium, Deepak Parekh Urges RBI Governor
- ❖ Gross NPA of banks may rise to 12.5 per cent by March 2021: RBI Financial Stability Report
- ❖ Will not hesitate to take more action to fuel growth: RBI Guv assures India Inc
- ❖ JSW Steel board approves NCD issuance up to Rs 10,000 crore
- ❖ LTRO helped bring short-tenor NBFC bond spreads by over 200 bps: RBI Financial Stability Report

## 10-year G-sec yield



## Inflation vs. Interest rate



## Debt FPI Inflows

Debt Watch	Percent
Call rate	3.15
Repo rate	4.00
10 Yr Gsec yield	5.86
1-mth CP rate	3.30
3-mth CP rate	3.70
6-mth CP rate	3.97
1 Yr CP rate	4.10
1-mth CD rate	3.22
3-mth CD rate	3.45
6-mth CD rate	3.55
1 Yr CD rate	3.87

Auctions / Money Market Operation		
Date	Description	Amount(Cr)
Jul-28	G-sec auction	--
Jul-28	Total repo	--
Jul-28	Total reverse repo	5,53,743
Jul-28	Marginal standing facility	--
Jul-28	GOI surplus cash balance with RBI	--

Date	Rs Crore		
	Gross Purchases	Gross Sales	Net Investments
27-Jul-20	743.2	951.2	(207.4)
24-Jul-20	937.0	679.7	257.3
23-Jul-20	1653.2	1875.9	(222.8)
Total Jun-2020	21934.6	23479.5	(1545.0)
Total May-2020	16020.9	38955.9	(22935.0)
Total 2019	392458.9	366578.5	25880.4

## Debt Fund Benchmark Indices

Market Indices	1 M (%)	1 Yr (%)	3 Yr (%)	5 Yr (%)
Crisil Composite Bond Fund Index	1.50	12.86	8.66	9.54
Crisil Short Term Bond Fund Index	1.09	11.39	8.43	8.63
Crisil ST Debt Hybrid 75+25 Index	2.32	9.84	7.73	8.67
Crisil Liquid Fund Index	0.32	5.58	6.73	6.97

## Macro

- ❖ Govt, RBI and 15th Finance Commission discuss bank recapitalisation
- ❖ 25-30 million lost jobs in MSMEs during March-June, says survey
- ❖ India Inc's foreign borrowings slip 81% to \$1.02 bn in June: RBI
- ❖ Govt plans tough rules to restrict use of Chinese telecom equipment
- ❖ Govt to go ahead with divestment of 23 PSUs cleared by Cabinet: Sitharaman

	Q3 FY2020(%)	Q2 FY2020(%)	Q3 FY2019(%)
GDP growth	4.7	4.5	6.6

Commodity Prices				
	Current	Week ago	Month ago	Year ago
Brent crude(\$/bbl)	43.41	43.28	41.02	63.18
Gold (RS/10 gms)	52,260	49,118	48,117	34,730

	May - 20 (%)	Apr - 20 (%)	Year ago (%) (May - 19)
CPI (Food)	9.28%	--	3.05
WPI	-3.21	--	2.45
Core Sector Output	-23.40	-38.12	3.80
IIP	-34.70	-55.50	3.10

## Global market trends

- ❖ US sees manufacturing growth ahead of Fed meeting, GDP data
- ❖ EU talks with Pfizer, Sanofi, J&J on COVID-19 vaccines hit pricing, payment roadblocks
- ❖ Moderna Covid-19 vaccine could be ready for use by end of year, says US
- ❖ Australian watchdog accuses Google of privacy breaches
- ❖ Europe's retail sector sees major shift as shoppers buy local due to Covid

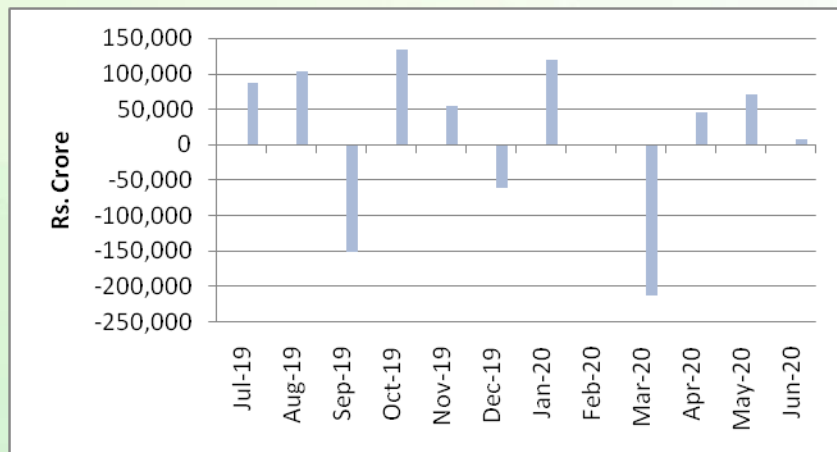
INR vs Global currency		
	Current	Prev close
USD	74.84	74.74
GBP	96.22	96.30
Euro	87.80	87.87
Yen	0.709	0.709
Yuan	10.69	10.69

Global equity benchmark indices returns(%)				
Benchmark	1 Day	1 Week	1 Month	1 Year
FTSE 100	-0.31	-2.50	-0.88	-19.13
Hang Seng	-0.41	-1.81	0.22	-13.36
Nikkei 225	-0.16	-0.01	0.91	4.88
S&P 500	0.74	-0.38	7.66	7.06
Shanghai Composite	0.26	-3.29	7.57	8.85

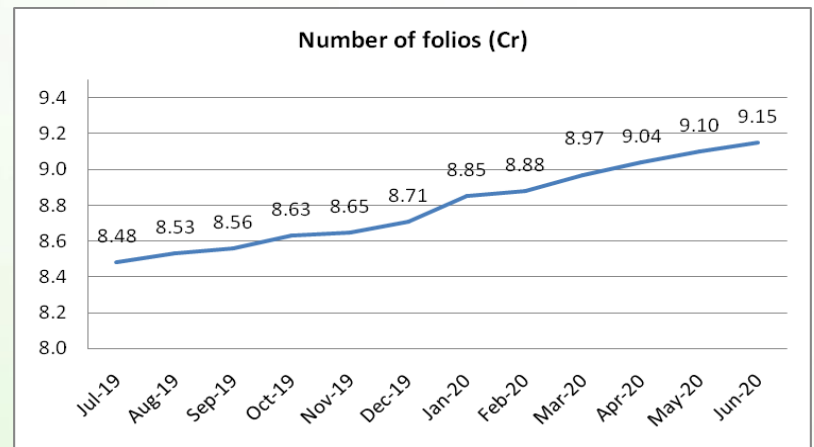
## Mutual Fund Roundup

- ❖ Sebi mandates MFs to use RFQ platform for 10% of secondary transactions from October 1
- ❖ SEBI asks debt funds to disclose portfolio on fortnightly basis along with yield of the instrument
- ❖ PMO writes to DEA and Sebi for Covid-19 support fund for closed-ended debt schemes
- ❖ SEBI to rejig debt fund norms; regulator taking feedback from mutual fund industry

### Mutual fund inflows



### Mutual fund folio growth



(Data source: NSE, NSDL, FIMMDA, investing.com, tradingeconomics.com, fx-rate.net, ACEMF, AMFI, RBI, equitymaster.com)

(News source: Economic Times, Business Standard)