

Equity Market

- ❖ Sensex slips 59 points to 37,872
- ❖ Index VIX rises 1.33% to 24.75
- ❖ Nifty P/E at 28.93, Nifty Midcap 100 P/E at 118.89

S&P CNX Nifty - 200 DMA



Nifty Equity Benchmark Indices

Index	Current Value	% chg	52 wk high	52 wk low
Nifty 50	11132.6	-0.27	12430.5	7511.1
Nifty Mid cap 100	15423.3	0.14	18495.9	10750.0
Nifty Small cap 100	4927.7	-0.01	6401.1	3202.9
Bank	22882.6	0.44	32613.1	16116.3
Auto	7204.0	-1.26	8501.2	4452.2
FMCG	31051.6	-0.73	32644.9	22699.1
Pharma	10175.2	0.21	10497.2	6242.9
Realty	199.1	-1.02	336.4	160.9

Factors driving the market

- ❖ Weak global markets owing to US-China tensions and a surge in coronavirus cases dented the investor sentiment
- ❖ Axis Bank gains 8% on better-than-expected Q1 earnings, lower-than-expected provisions
- ❖ HUL down 3% after its June quarter report card suggested it is yet to see any major revival in rural growth

Nifty Top Gainers/Losers

Index	Value	52 wk high	52 wk low
Top Gainers			
Axis Bank	476.0	765.9	286.0
Titan	1065.5	1390.0	720.9
Power Grid	179.9	216.3	122.2
Top Losers			
Hero MotoCorp	2774.0	3022.9	1475.0
BPCL	449.9	549.0	252.0
HUL	2247.0	2614.3	1659.1

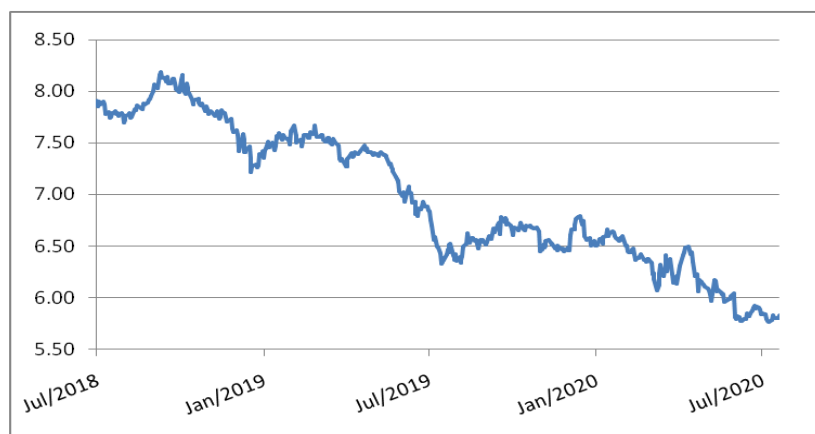
Equity FPI Inflows

Date	Rs Crore		
	Gross Purchases	Gross Sales	Net Investments
22-Jul-20	8031.9	5941.7	2090.2
21-Jul-20	4950.0	3302.2	1647.8
20-Jul-20	5366.8	4564.5	802.3
Total Jun-2020	170846.4	149014.5	21831.6
Total May-2020	130298.5	115729.8	14568.8
Total 2019	1437559.6	1336438.9	101120.8

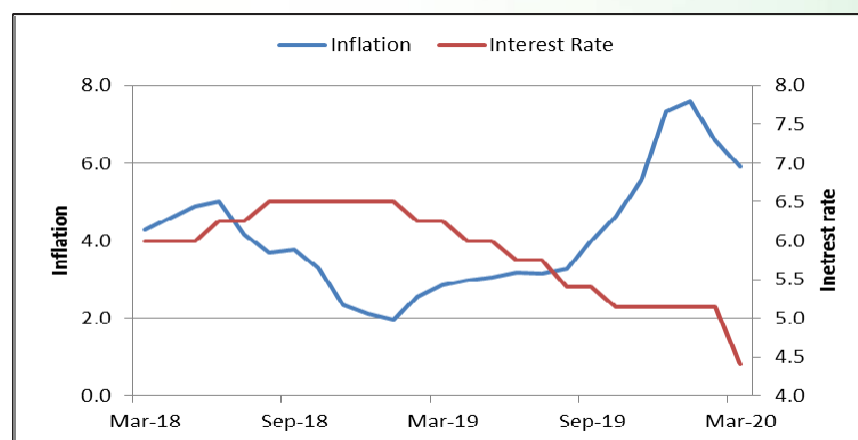
Debt Market

- ❖ RBI likely to support the bond markets for next three years
- ❖ Corp bond mkt restricted to top rated bonds; need more players : Sebi chief
- ❖ BSNL plans to raise Rs 8,500 crore via local bonds
- ❖ Bankers divided on extending moratorium, fear potential spike in bad loans
- ❖ Ind-Ra assigns HPCL's NCDs AAA with a stable outlook

10-year G-sec yield



Inflation vs. Interest rate



Debt FPI Inflows

Debt Watch	Percent
Call rate	3.20
Repo rate	4.00
10 Yr Gsec yield	5.81
1-mth CP rate	3.38
3-mth CP rate	3.34
6-mth CP rate	3.43
1 Yr CP rate	4.10
1-mth CD rate	3.20
3-mth CD rate	3.27
6-mth CD rate	3.60
1 Yr CD rate	3.87

Auctions / Money Market Operation		
Date	Description	Amount(Cr)
Jul-23	G-sec auction	--
Jul-23	Total repo	--
Jul-23	Total reverse repo	5,65,381
Jul-23	Marginal standing facility	60
Jul-23	GOI surplus cash balance with RBI	--

Date	Rs Crore		
	Gross Purchases	Gross Sales	Net Investments
22-Jul-20	212.9	2023.5	(1810.7)
21-Jul-20	764.2	396.2	368.0
20-Jul-20	946.9	881.5	65.4
Total Jun-2020	21934.6	23479.5	(1545.0)
Total May-2020	16020.9	38955.9	(22935.0)
Total 2019	392458.9	366578.5	25880.4

Debt Fund Benchmark Indices

Market Indices	1 M (%)	1 Yr (%)	3 Yr (%)	5 Yr (%)
Crisil Composite Bond Fund Index	1.75	12.30	8.66	9.57
Crisil Short Term Bond Fund Index	1.40	11.33	8.44	8.65
Crisil ST Debt Hybrid 75+25 Index	2.84	9.73	7.85	8.55
Crisil Liquid Fund Index	0.32	5.62	6.74	6.98

Macro

- ❖ Electronic toll collection on highways rebounds to March levels in June: Crisil
- ❖ Big-ticket loan disbursements slump 67 percent in June quarter as capex borrowings wane
- ❖ Never been a better time to invest in India: PM Modi at India Ideas Summit
- ❖ Nomura estimates India's GDP to contract by 6.1% in FY21, sees no rate cut in August
- ❖ Government to recalibrate FTA strategy to ensure economic and strategic benefits

	Q3 FY2020(%)	Q2 FY2020(%)	Q3 FY2019(%)
GDP growth	4.7	4.5	6.6

Commodity Prices				
	Current	Week ago	Month ago	Year ago
Brent crude(\$/bbl)	44.29	43.79	43.03	63.26
Gold (RS/10 gms)	50,005	49,062	47,928	34,932

	May - 20 (%)	Apr - 20 (%)	Year ago (%) (May - 19)
CPI (Food)	9.28%	--	3.05
WPI	-3.21	--	2.45
Core Sector Output	-23.40	-38.12	3.80
IIP	-34.70	-55.50	3.10

Global market trends

- ❖ US to pay \$1.95 bn to Pfizer for producing 100 mn Covid-19 vaccine doses
- ❖ Gold sprints to nine-year peak on softer dollar, stimulus expectations
- ❖ Expectations worsen for Europe's Q2 earnings season over recession fears
- ❖ US plans to adopt global emission norms for planes to curb climate change
- ❖ Tension escalates as Trump orders closure of Chinese consulate in Houston

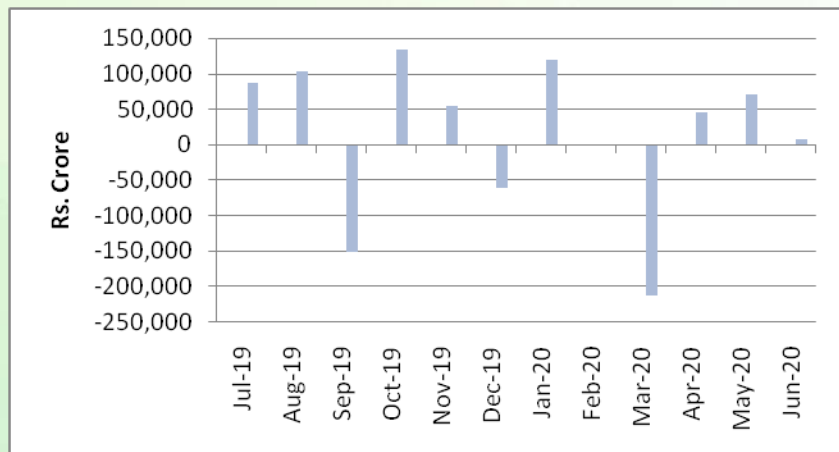
INR vs Global currency		
	Current	Prev close
USD	74.67	74.64
GBP	95.15	95.02
Euro	86.47	86.37
Yen	0.697	0.697
Yuan	10.66	10.65

Global equity benchmark indices returns(%)				
Benchmark	1 Day	1 Week	1 Month	1 Year
FTSE 100	-1.00	-1.36	-0.60	-17.40
Hang Seng	-2.25	-1.66	2.23	-11.68
Nikkei 225	-0.58	-0.85	1.40	6.23
S&P 500	0.57	1.53	5.07	9.75
Shanghai Composite	0.37	-0.84	12.41	15.46

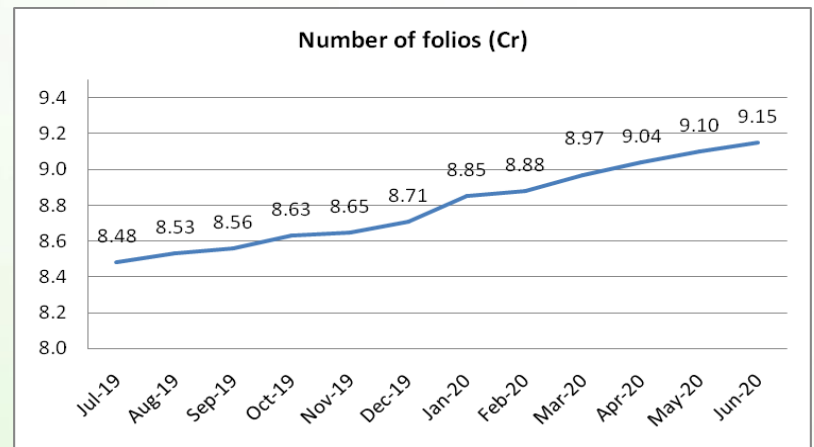
Mutual Fund Roundup

- ❖ Mutual Funds cut exposure to NBFCs by half in two years: SEBI data
- ❖ PMO writes to DEA and Sebi for Covid-19 support fund for closed-ended debt schemes
- ❖ SEBI to rejig debt fund norms; regulator taking feedback from mutual fund industry
- ❖ Banks, RBI deploy close to Rs 8,000 crore in April and May to ease MF liquidity

Mutual fund inflows



Mutual fund folio growth



(Data source: NSE, NSDL, FIMMDA, investing.com, tradingeconomics.com, fx-rate.net, ACEMF, AMFI, RBI, equitymaster.com)

(News source: Economic Times, Business Standard)