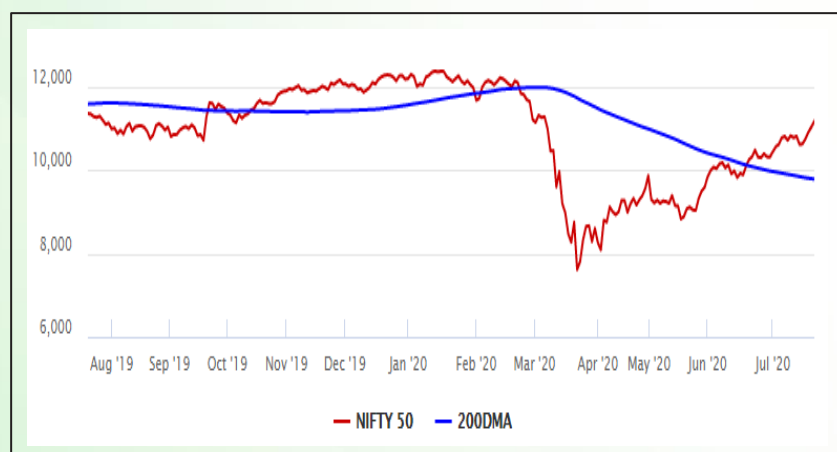


## Equity Market

- ❖ Sensex surges 511 points to close at 37,930
- ❖ Index VIX declines -0.53% to 24.43
- ❖ Nifty P/E at 29.01, Nifty Midcap 100 P/E at 118.45

### S&P CNX Nifty - 200 DMA



### Nifty Equity Benchmark Indices

Index	Current Value	% chg	52 wk high	52 wk low
Nifty 50	11162.3	1.27	12430.5	7511.1
Nifty Mid cap 100	15402.4	0.09	18495.9	10750.0
Nifty Small cap 100	4928.1	0.41	6401.1	3202.9
Bank	22782.0	2.06	32613.1	16116.3
Auto	7295.8	1.67	8501.2	4452.2
FMCG	31280.3	-0.81	32644.9	22699.1
Pharma	10153.8	-1.46	10404.4	6242.9
Realty	201.1	1.95	336.4	160.9

## Factors driving the market

- ❖ Market ended higher amid broad-based buying and firm global cues; RIL, Banks lead rally
- ❖ BPCL shares rally 10% intraday on global oil companies' interest in stake buying
- ❖ Rahul Bajaj steps down as Bajaj Finance's chairman; stock ends 4% lower

### Nifty Top Gainers/Losers

Index	Value	52 wk high	52 wk low
<b>Top Gainers</b>			
Power Grid	174.0	216.3	122.2
IOC	93.3	156.0	71.2
BPCL	461.1	549.0	252.0
<b>Top Losers</b>			
Bajaj Finance	3304.0	4923.4	1783.0
Bajaj Finserv	6387.1	9950.0	3985.3
Britannia	3888.8	4010.0	2100.0

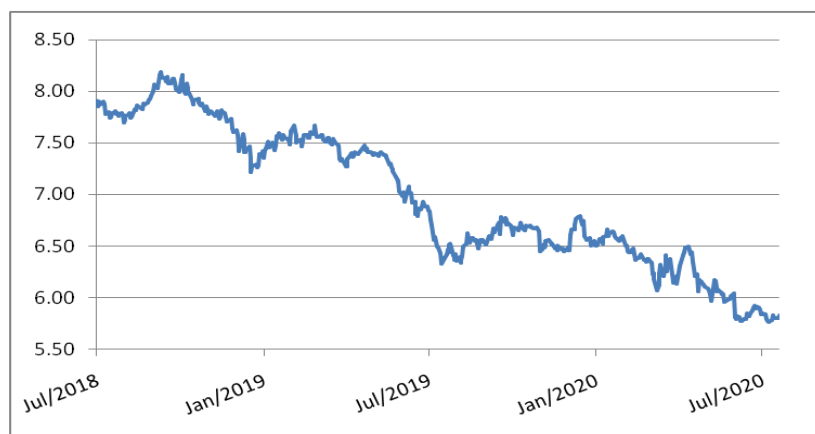
### Equity FPI Inflows

Date	Rs Crore		
	Gross Purchases	Gross Sales	Net Investments
21-Jul-20	4950.0	3302.2	1647.8
20-Jul-20	5366.8	4564.5	802.3
17-Jul-20	4287.5	5489.9	(1202.4)
Total Jun-2020	170846.4	149014.5	21831.6
Total May-2020	130298.5	115729.8	14568.8
Total 2019	1437559.6	1336438.9	101120.8

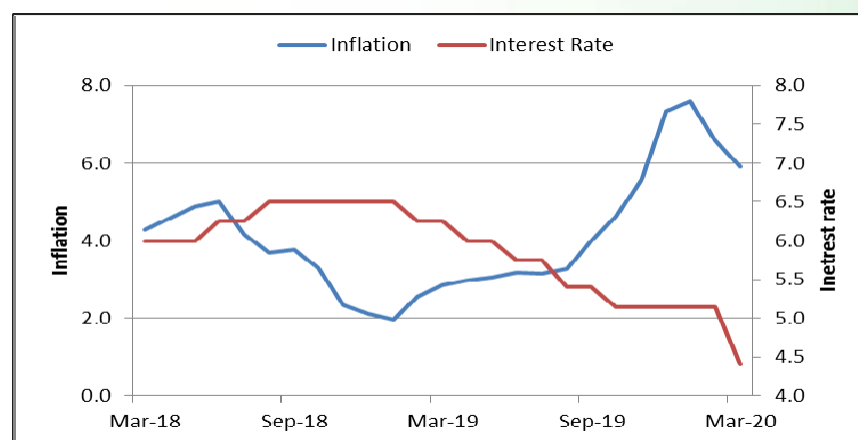
## Debt Market

- ❖ HDFC appoints record 19 merchant banks for mega Rs 14,000-crore fund raise
- ❖ Tata Power arm Coastal Gujarat Power raises Rs 350 cr via private placement of NCD
- ❖ Edelweiss to exit wholesale business, focus on retail lending
- ❖ IL&FS lays out roadmap to address over Rs 57,000 cr of debt
- ❖ Fitch Affirms Indian Oil Corporation at 'BBB-'; Outlook Negative

## 10-year G-sec yield



## Inflation vs. Interest rate



## Debt FPI Inflows

Debt Watch	Percent
Call rate	3.19
Repo rate	4.00
10 Yr Gsec yield	5.83
1-mth CP rate	3.38
3-mth CP rate	3.34
6-mth CP rate	3.43
1 Yr CP rate	4.10
1-mth CD rate	3.15
3-mth CD rate	3.27
6-mth CD rate	3.60
1 Yr CD rate	3.88

Auctions / Money Market Operation		
Date	Description	Amount(Cr)
Jul-22	G-sec auction	--
Jul-22	Total repo	--
Jul-22	Total reverse repo	5,80,300
Jul-22	Marginal standing facility	--
Jul-22	GOI surplus cash balance with RBI	--

Date	Rs Crore		
	Gross Purchases	Gross Sales	Net Investments
21-Jul-20	764.2	396.2	368.0
20-Jul-20	946.9	881.5	65.4
17-Jul-20	1467.4	2080.7	(613.3)
Total Jun-2020	21934.6	23479.5	(1545.0)
Total May-2020	16020.9	38955.9	(22935.0)
Total 2019	392458.9	366578.5	25880.4

## Debt Fund Benchmark Indices

Market Indices	1 M (%)	1 Yr (%)	3 Yr (%)	5 Yr (%)
Crisil Composite Bond Fund Index	1.84	12.09	8.70	9.60
Crisil Short Term Bond Fund Index	1.47	11.28	8.46	8.67
Crisil ST Debt Hybrid 75+25 Index	2.94	9.33	7.80	8.58
Crisil Liquid Fund Index	0.31	5.61	6.75	6.98

## Macro

- ❖ Agriculture driving growth; open to more measures: FM Nirmala Sitharaman
- ❖ India best destination for foreign investment in MSMEs, NBFCs: Gadkari
- ❖ Inflation could surge to 12% on second stimulus, says Rabobank
- ❖ Govt may allow 100% FDI in completed housing projects
- ❖ Indian MSMEs on Amazon global selling programme cross \$2 billion in exports

	Q3 FY2020(%)	Q2 FY2020(%)	Q3 FY2019(%)
GDP growth	4.7	4.5	6.6

Commodity Prices				
	Current	Week ago	Month ago	Year ago
Brent crude(\$/bbl)	44.32	42.90	43.03	63.36
Gold (RS/10 gms)	49,264	48,998	47,928	34,932

	May - 20 (%)	Apr - 20 (%)	Year ago (%) (May - 19)
CPI (Food)	9.28%	--	3.05
WPI	-3.21	--	2.45
Core Sector Output	-23.40	-38.12	3.80
IIP	-34.70	-55.50	3.10

## Global market trends

- ❖ EU nations close in on \$2.1 trillion budget, \$858 billion coronavirus recovery fund
- ❖ Wall Street climbs on upbeat corporate earnings, stimulus hopes
- ❖ China will strive to make up economic losses caused by coronavirus: President Xi Jinping
- ❖ Oxford coronavirus vaccine trial results 'extremely encouraging', UK government says
- ❖ Hong Kong's 'specialness' being eroded, zero growth plausible, says S&P

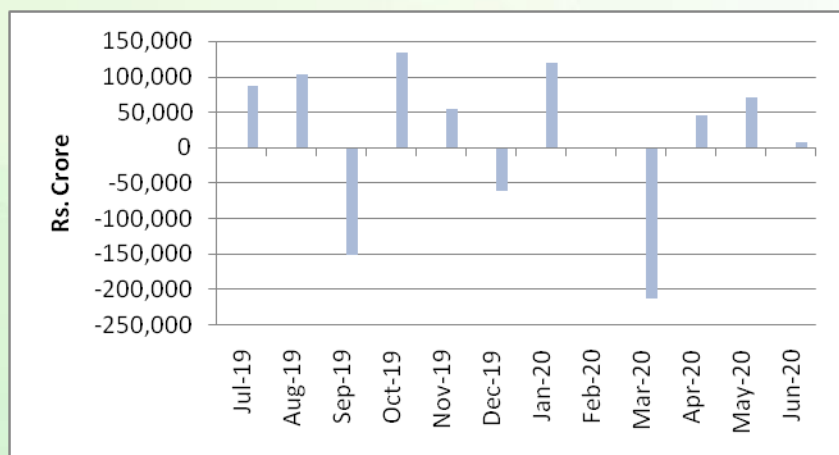
INR vs Global currency		
	Current	Prev close
USD	74.65	74.54
GBP	94.96	94.84
Euro	86.14	85.98
Yen	0.699	0.698
Yuan	10.71	10.69

Global equity benchmark indices returns(%)				
Benchmark	1 Day	1 Week	1 Month	1 Year
FTSE 100	0.13	1.46	-0.36	-16.50
Hang Seng	2.31	0.62	4.02	-10.88
Nikkei 225	0.73	1.32	1.80	6.60
S&P 500	0.17	1.87	5.15	9.43
Shanghai Composite	0.20	-2.74	11.90	13.57

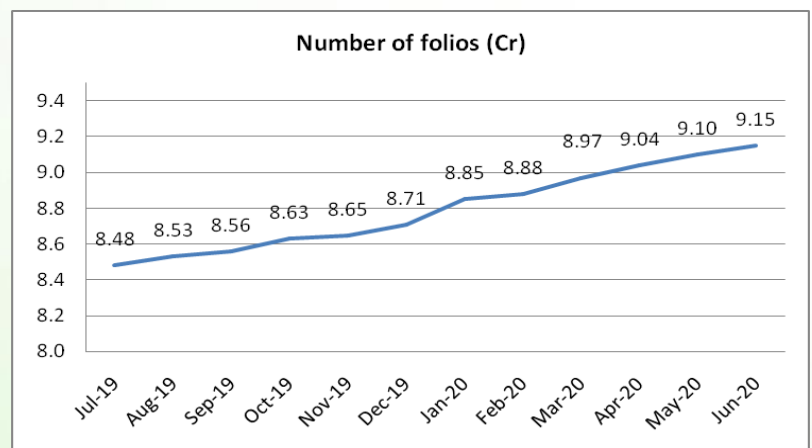
## Mutual Fund Roundup

- ❖ Mutual Funds cut exposure to NBFCs by half in two years: SEBI data
- ❖ PMO writes to DEA and Sebi for Covid-19 support fund for closed-ended debt schemes
- ❖ SEBI to rejig debt fund norms; regulator taking feedback from mutual fund industry
- ❖ Banks, RBI deploy close to Rs 8,000 crore in April and May to ease MF liquidity

### Mutual fund inflows



### Mutual fund folio growth



(Data source: NSE, NSDL, FIMMDA, investing.com, tradingeconomics.com, fx-rate.net, ACEMF, AMFI, RBI, equitymaster.com)

(News source: Economic Times, Business Standard)