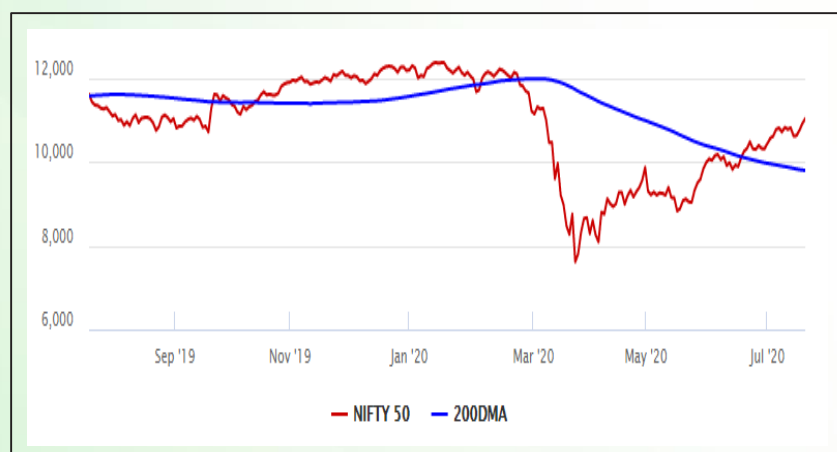


Equity Market

- ❖ Sensex climbs 399 points up to 37,419; Nifty reclaims 11,000 mark
- ❖ Index VIX up 1.89% to 24.71
- ❖ Nifty P/E at 28.86, Nifty Midcap 100 P/E at 119.27

S&P CNX Nifty - 200 DMA



Nifty Equity Benchmark Indices

Index	Current Value	% chg	52 wk high	52 wk low
Nifty 50	11022.2	1.11	12430.5	7511.1
Nifty Mid cap 100	15388.6	0.96	18495.9	10750.0
Nifty Small cap 100	4908.0	1.15	6401.1	3202.9
Bank	22321.9	1.62	32613.1	16116.3
Auto	7175.9	0.54	8501.2	4452.2
FMCG	31536.4	0.31	32644.9	22699.1
Pharma	10304.6	-1.60	10404.4	6242.9
Realty	197.3	0.43	336.4	160.9

Factors driving the market

- ❖ HDFC Bank lifts financial stocks post strong June quarter earnings
- ❖ IT stocks extended gains after strong quarterly performances posted last week
- ❖ Info Edge advances 4%, hits record high on reports of Policybazaar's IPO

Nifty Top Gainers/Losers

Index	Value	52 wk high	52 wk low
Top Gainers			
Britannia	3978.8	3993.0	2100.0
Wipro	273.0	276.2	159.4
Infosys	943.0	955.5	509.3
Top Losers			
Sun Pharma	484.0	512.7	312.0
Cipla	674.3	696.7	355.3
ZEEL	154.7	405.2	114.0

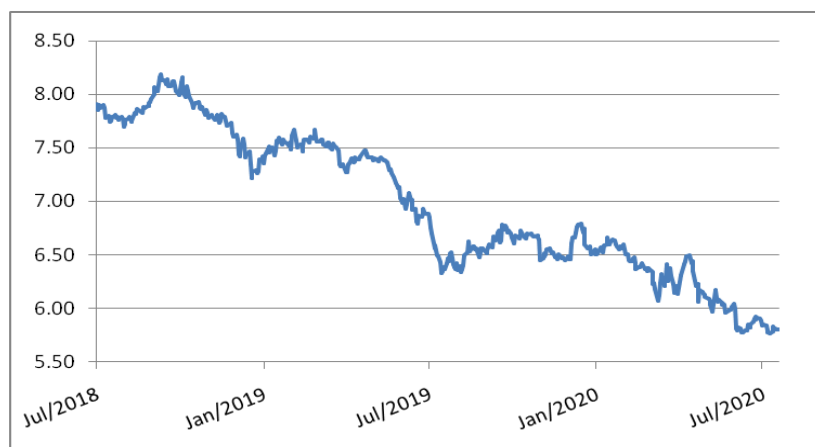
Equity FPI Inflows

Date	Rs Crore		
	Gross Purchases	Gross Sales	Net Investments
20-Jul-20	5366.8	4564.5	802.3
17-Jul-20	4287.5	5489.9	(1202.4)
16-Jul-20	4705.9	4740.9	(35.0)
Total Jun-2020	170846.4	149014.5	21831.6
Total May-2020	130298.5	115729.8	14568.8
Total 2019	1437559.6	1336438.9	101120.8

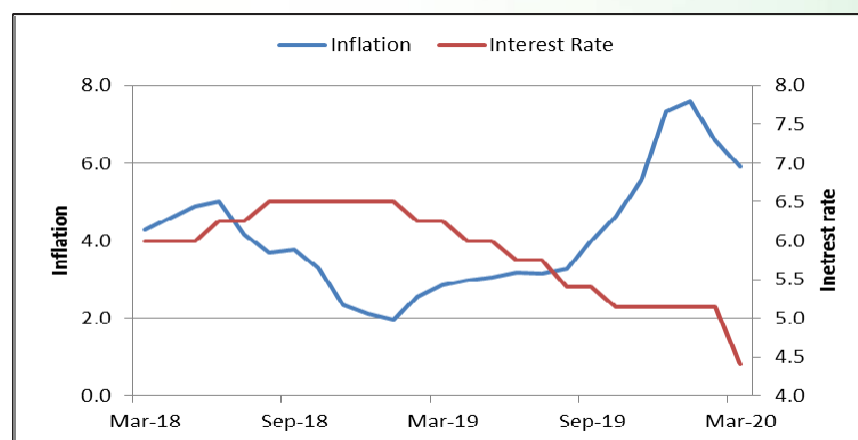
Debt Market

- ❖ HDFC appoints record 19 merchant banks for mega Rs 14,000-crore fund raise
- ❖ Tata Power arm Coastal Gujarat Power raises Rs 350 cr via private placement of NCD
- ❖ Edelweiss to exit wholesale business, focus on retail lending
- ❖ IL&FS lays out roadmap to address over Rs 57,000 cr of debt
- ❖ Fitch Affirms Indian Oil Corporation at 'BBB-'; Outlook Negative

10-year G-sec yield



Inflation vs. Interest rate



Debt FPI Inflows

Debt Watch	Percent
Call rate	3.18
Repo rate	4.00
10 Yr Gsec yield	5.80
1-mth CP rate	3.27
3-mth CP rate	3.34
6-mth CP rate	3.43
1 Yr CP rate	4.10
1-mth CD rate	3.27
3-mth CD rate	4.40
6-mth CD rate	3.51
1 Yr CD rate	3.89

Auctions / Money Market Operation		
Date	Description	Amount(Cr)
Jul-20	G-sec auction	--
Jul-20	Total repo	--
Jul-20	Total reverse repo	6,13,626
Jul-20	Marginal standing facility	20
Jul-20	GOI surplus cash balance with RBI	--

Date	Rs Crore		
	Gross Purchases	Gross Sales	Net Investments
20-Jul-20	946.9	881.5	65.4
17-Jul-20	1467.4	2080.7	(613.3)
16-Jul-20	1250.7	1832.2	(581.5)
Total Jun-2020	21934.6	23479.5	(1545.0)
Total May-2020	16020.9	38955.9	(22935.0)
Total 2019	392458.9	366578.5	25880.4

Debt Fund Benchmark Indices

Market Indices	1 M (%)	1 Yr (%)	3 Yr (%)	5 Yr (%)
Crisil Composite Bond Fund Index	22.55	12.08	8.76	9.59
Crisil Short Term Bond Fund Index	18.09	11.27	8.48	8.67
Crisil ST Debt Hybrid 75+25 Index	33.89	9.31	7.84	8.52
Crisil Liquid Fund Index	3.92	5.61	6.74	6.98

Macro

- ❖ Retail inflation for farm workers, rural labourers eases in June
- ❖ India should focus on food security, use its rural population to battle COVID-19: Richard Wolff
- ❖ Govt eyeing more steps to aid recovery, PM Narendra Modi to take a final call
- ❖ Govt may allow 100% FDI in completed housing projects
- ❖ Indian MSMEs on Amazon global selling programme cross \$2 billion in exports

	Q3 FY2020(%)	Q2 FY2020(%)	Q3 FY2019(%)
GDP growth	4.7	4.5	6.6

Commodity Prices				
	Current	Week ago	Month ago	Year ago
Brent crude(\$/bbl)	43.38	43.11	42.47	64.07
Gold (RS/10 gms)	49,118	48,998	47,302	34,392

	May - 20 (%)	Apr - 20 (%)	Year ago (%) (May - 19)
CPI (Food)	9.28%	--	3.05
WPI	-3.21	--	2.45
Core Sector Output	-23.40	-38.12	3.80
IIP	-34.70	-55.50	3.10

Global market trends

- ❖ EU leaders clinch \$2.1 trillion pandemic relief and budget deal after 4 days, 4 nights of infighting
- ❖ Saddled with risky financial assets, China is getting closer to its Lehman moment
- ❖ Former White House strategist reveals Trump's 'war plan' to confront China
- ❖ Hong Kong's 'specialness' being eroded, zero growth plausible, says S&P

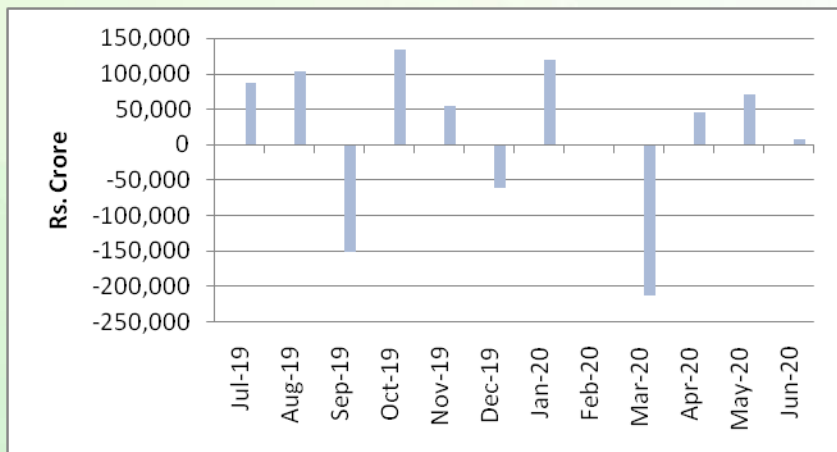
INR vs Global currency		
	Current	Prev close
USD	74.75	74.97
GBP	94.78	93.92
Euro	85.68	85.62
Yen	0.697	0.698
Yuan	10.7	10.71

Global equity benchmark indices returns(%)				
Benchmark	1 Day	1 Week	1 Month	1 Year
FTSE 100	-0.46	1.32	0.27	-16.68
Hang Seng	1.68	0.02	3.96	-10.18
Nikkei 225	0.83	1.42	2.09	6.96
S&P 500	0.84	1.70	4.30	8.94
Shanghai Composite	0.01	-5.03	11.66	14.69

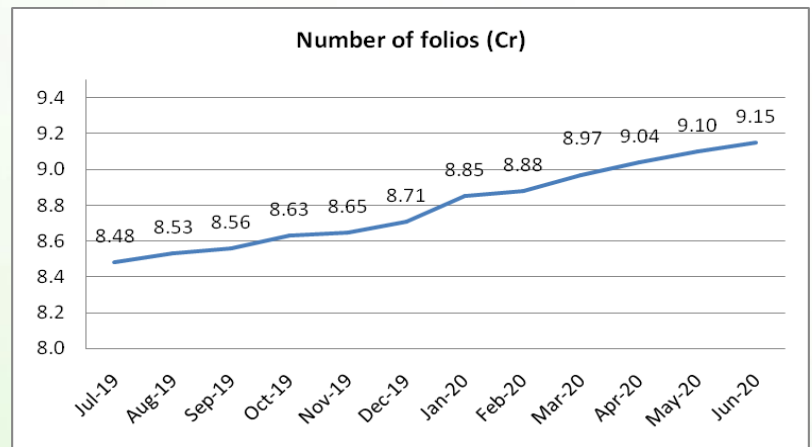
Mutual Fund Roundup

- ❖ PMO writes to DEA and Sebi for Covid-19 support fund for closed-ended debt schemes
- ❖ SEBI to rejig debt fund norms; regulator taking feedback from mutual fund industry
- ❖ Banks, RBI deploy close to Rs 8,000 crore in April and May to ease MF liquidity
- ❖ Equity mutual fund inflows fall sharply to Rs 240.6 crore in June; Debt fund inflows at Rs 2,862 crore

Mutual fund inflows



Mutual fund folio growth



(Data source: NSE, NSDL, FIMMDA, investing.com, tradingeconomics.com, fx-rate.net, ACEMF, AMFI, RBI, equitymaster.com)

(News source: Economic Times, Business Standard)