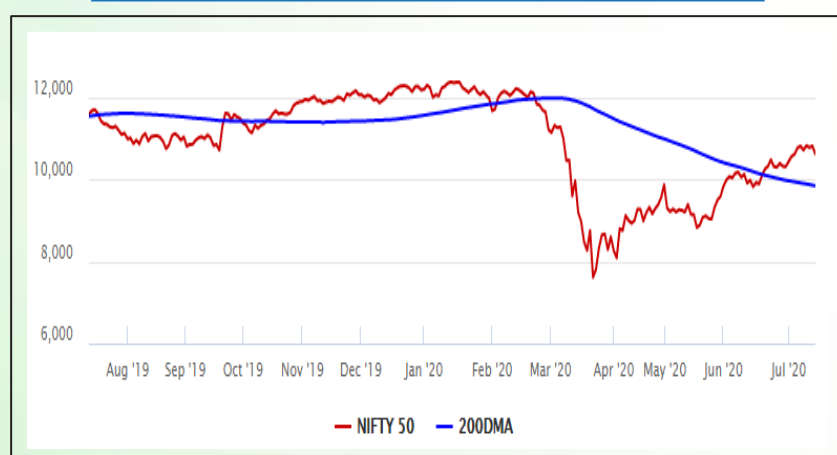


Equity Market

- ❖ Sensex tanks 661 points to end at 36,033
- ❖ Index VIX climbs 5.73% to 26.64
- ❖ Nifty P/E at 27.85, Nifty Midcap 100 P/E at 114.86

S&P CNX Nifty - 200 DMA



Nifty Equity Benchmark Indices

Index	Current Value	% chg	52 wk high	52 wk low
Nifty 50	10607.4	-1.81	12430.5	7511.1
Nifty Mid cap 100	15052.4	-1.08	18495.9	10750.0
Nifty Small cap 100	4799.9	-1.49	6401.1	3202.9
Bank	21392.2	-3.16	32613.1	16116.3
Auto	6916.02	-2.38	8501.2	4452.2
FMCG	30932.9	-0.90	32644.9	22699.1
Pharma	10155.1	0.48	10404.4	6242.9
Realty	199.7	-1.53	336.4	160.9

Factors driving the market

- ❖ Bears gripped market on escalating tensions between US and China
- ❖ HDFC twins dragged the market on report of improper vehicle financing
- ❖ Consumer goods, smartphones and automobiles sales declined by 33% in the past week on mini lockdowns

Nifty Top Gainers/Losers

Index	Value	52 wk high	52 wk low
Top Gainers			
Dr Reddy's Lab	3975.1	4190.0	2351.2
Titan	975.2	1390.0	720.9
Bharti Airtel	588.4	612.0	321.2
Top Losers			
IndusInd Bank	510.0	1596.6	235.6
Axis Bank	418.5	765.9	286.0
Eicher Motors	18776.0	23450.0	12450.1

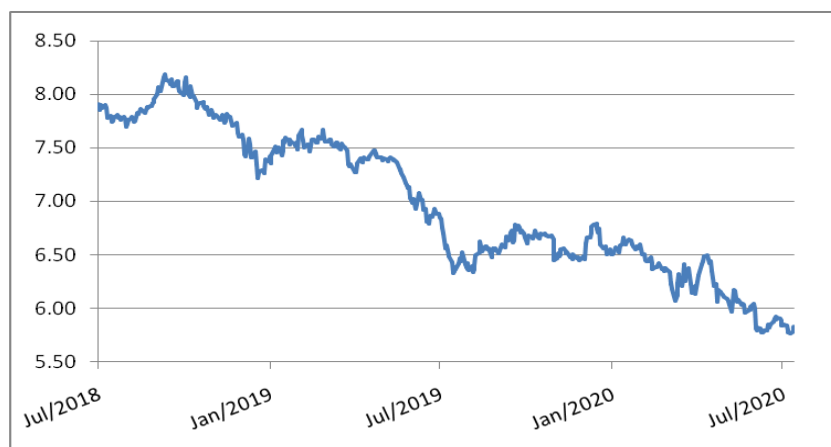
Equity FPI Inflows

Date	Rs Crore		
	Gross Purchases	Gross Sales	Net Investments
14-Jul-20	3630.5	3714.6	(84.1)
13-Jul-20	2590.2	3524.4	(934.3)
10-Jul-20	7660.0	4282.7	3377.3
Total Jun-2020	170846.4	149014.5	21831.6
Total May-2020	130298.5	115729.8	14568.8
Total 2019	1437559.6	1336438.9	101120.8

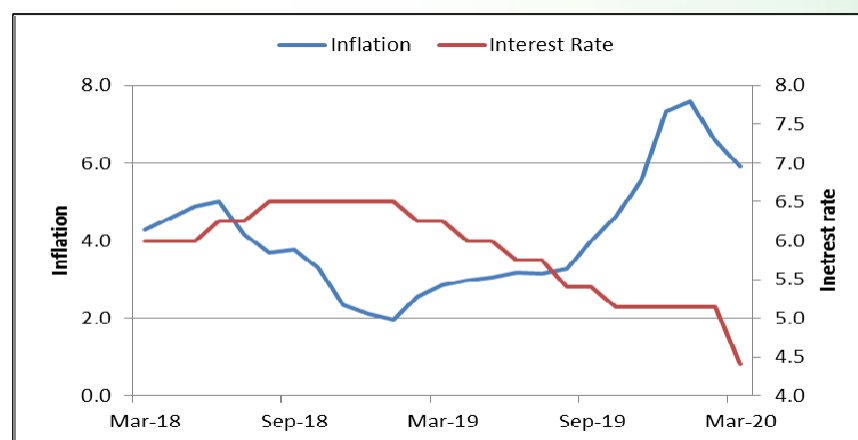
Debt Market

- ❖ India's financial sector to see record levels of bad loans in six months: Rajan
- ❖ India Inc's credit profile continues to worsen; 21 firms being downgraded every day on average
- ❖ Moody's downgrades Motherson Sumi's rating outlook to negative
- ❖ Recent liquidity measures help reduce financing cost in corporate bond market to decadal low: RBI
- ❖ Bombay High Court dismisses Zee Learn's petition on moratorium on bonds

10-year G-sec yield



Inflation vs. Interest rate



Debt FPI Inflows

Debt Watch	Percent
Call rate	3.13
Repo rate	4.00
10 Yr Gsec yield	5.83
1-mth CP rate	3.24
3-mth CP rate	3.45
6-mth CP rate	4.10
1 Yr CP rate	4.10
1-mth CD rate	3.20
3-mth CD rate	3.21
6-mth CD rate	3.51
1 Yr CD rate	3.97

Auctions / Money Market Operation		
Date	Description	Amount(Cr)
Jul-15	G-sec auction	--
Jul-15	Total repo	--
Jul-15	Total reverse repo	6,40,688
Jul-15	Marginal standing facility	--
Jul-15	GOI surplus cash balance with RBI	--

Date	Rs Crore		
	Gross Purchases	Gross Sales	Net Investments
14-Jul-20	1782.9	1289.9	493.0
13-Jul-20	2018.9	1549.4	469.5
10-Jul-20	420.4	1939.6	(1519.2)
Total Jun-2020	21934.6	23479.5	(1545.0)
Total May-2020	16020.9	38955.9	(22935.0)
Total 2019	392458.9	366578.5	25880.4

Debt Fund Benchmark Indices

Market Indices	1 M (%)	1 Yr (%)	3 Yr (%)	5 Yr (%)
Crisil Composite Bond Fund Index	2.12	12.22	8.78	9.58
Crisil Short Term Bond Fund Index	1.91	11.40	8.50	8.66
Crisil ST Debt Hybrid 75+25 Index	2.99	8.08	7.53	8.43
Crisil Liquid Fund Index	0.35	5.70	6.77	7.00

Macro

- ❖ CPI-based inflation rose to 6.1% in June; food inflation eased to 7.9%
- ❖ India June WPI inflation contracts by 1.8% in June vs -3.2% in May
- ❖ Economists pitch for second round of stimulus with a greater focus on small businesses
- ❖ July data indicates consumption may be stagnating amid Covid-19 crisis
- ❖ India needs to leverage performance of farm sector to push growth: Subbarao

	Q3 FY2020(%)	Q2 FY2020(%)	Q3 FY2019(%)
GDP growth	4.7	4.5	6.6

Commodity Prices				
	Current	Week ago	Month ago	Year ago
Brent crude(\$/bbl)	42.90	43.08	39.79	66.74
Gold (RS/10 gms)	48,998	48,235	47,337	34,583

	May - 20 (%)	Apr - 20 (%)	Year ago (%) (May - 19)
CPI (Food)	9.28%	--	3.05
WPI	-3.21	--	2.45
Core Sector Output	-23.40	-38.12	3.80
IIP	-34.70	-55.50	3.10

Global market trends

- ❖ S&P 500, Dow Jones rise after mixed bank earnings; tech-heavy Nasdaq falls
- ❖ US govt scraps order asking some foreign students to leave country
- ❖ China posts import growth in June, first since Covid-19 pandemic outbreak
- ❖ Trump signs into law suspending US privileges to Hong Kong
- ❖ US shutting again as local leaders reverse reopenings amid Covid-19 spread

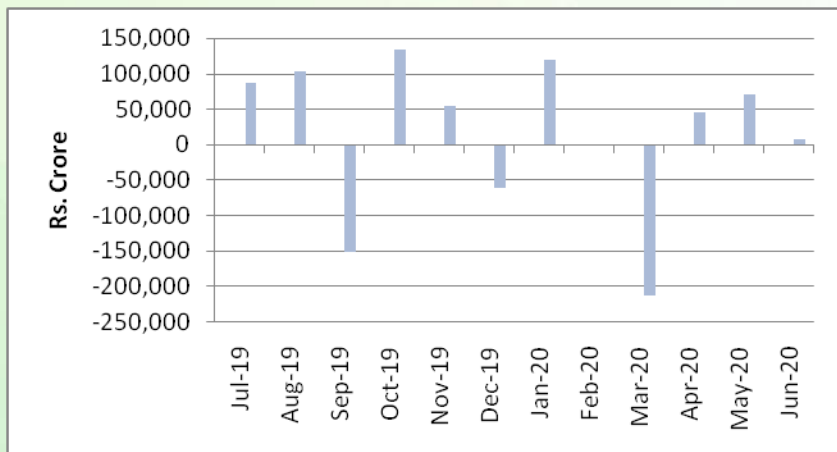
INR vs Global currency		
	Current	Prev close
USD	75.33	75.31
GBP	94.71	94.74
Euro	85.86	85.91
Yen	0.702	0.702
Yuan	10.76	10.76

Global equity benchmark indices returns(%)				
Benchmark	1 Day	1 Week	1 Month	1 Year
FTSE 100	0.06	-0.16	1.22	-17.67
Hang Seng	-1.14	-1.92	4.84	-10.51
Nikkei 225	-0.87	-0.12	1.26	4.16
S&P 500	1.34	1.66	5.14	6.10
Shanghai Composite	-0.83	2.07	16.95	16.52

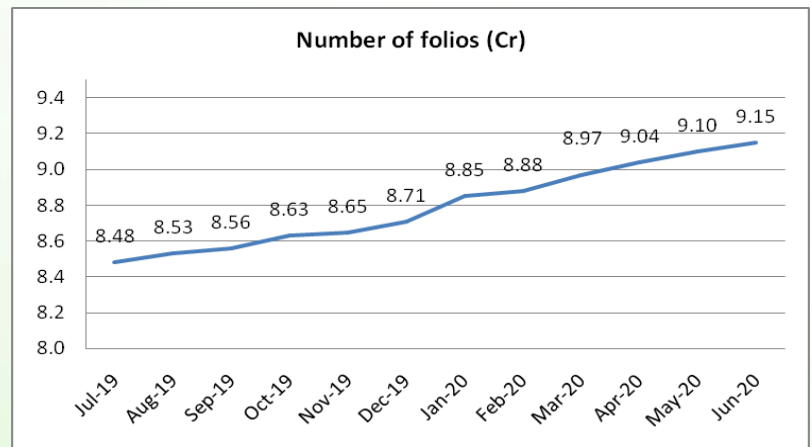
Mutual Fund Roundup

- ❖ SEBI to rejig debt fund norms; regulator taking feedback from mutual fund industry
- ❖ Banks, RBI deploy close to Rs 8,000 crore to ease MF liquidity in April and May
- ❖ Equity mutual fund inflows fall sharply to Rs 240.6 crore in June; multi cap and large cap funds see high outflows
- ❖ Debt fund inflows at Rs 2,862 crore; Liquid funds see high outflow on account of advance tax payment

Mutual fund inflows



Mutual fund folio growth



(Data source: NSE, NSDL, FIMMDA, investing.com, tradingeconomics.com, fx-rate.net, ACEMF, AMFI, RBI, equitymaster.com)

(News source: Economic Times, Business Standard)