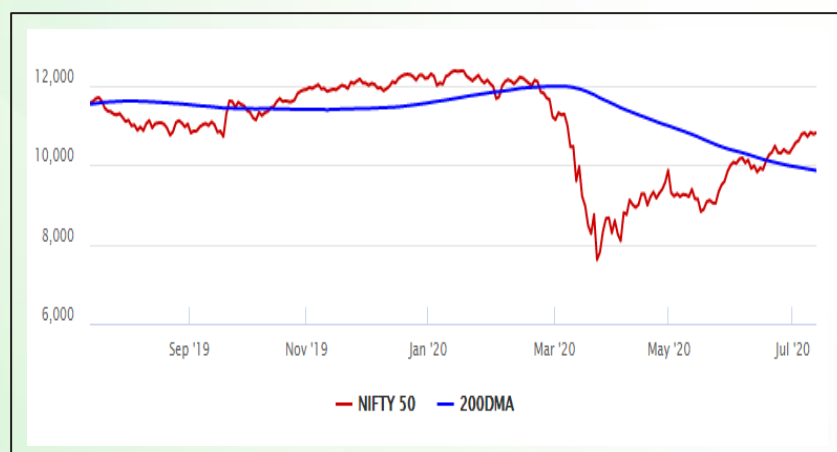


Equity Market

- ❖ Sensex ends 99 points higher at 36,694
- ❖ Index VIX rises 1% to 25.25
- ❖ Nifty P/E at 28.36, Nifty Midcap 100 P/E at 129.99

S&P CNX Nifty - 200 DMA



Nifty Equity Benchmark Indices

Index	Current Value	% chg	52 wk high	52 wk low
Nifty 50	10802.7	0.44	12430.5	7511.1
Nifty Mid cap 100	15217.2	-0.18	18495.9	10750.0
Nifty Small cap 100	4872.7	0.09	6401.1	3202.9
Bank	22118.0	-1.25	32613.1	16116.3
Auto	7084.5	0.66	8501.2	4452.2
FMCG	31214.9	1.28	32644.9	22699.1
Pharma	10106.6	0.37	10404.4	6242.9
Realty	202.8	-1.58	336.4	160.9

Factors driving the market

- ❖ IT stocks such as Tech Mahindra, HCL Tech, and Infosys were among the top gainers ahead of earnings this week
- ❖ RIL hit lifetime high of Rs 1,947 on 0.15% stake sale in Jio Platforms to Qualcomm Ventures for Rs 730 crore
- ❖ Financial stocks biggest losers, HDFC Bank dips 3% on report of improper vehicle financing

Nifty Top Gainers/Losers

Index	Value	52 wk high	52 wk low
Top Gainers			
Tech Mahindra	600.5	845.9	471.4
Hindalco	169.9	221.2	84.9
HCL Tech	604.0	623.5	375.3
Top Losers			
Power Grid	168.8	216.3	122.2
Bajaj Finance	3244.6	4923.4	1783.0
HDFC Bank	1083.6	1305.5	738.8

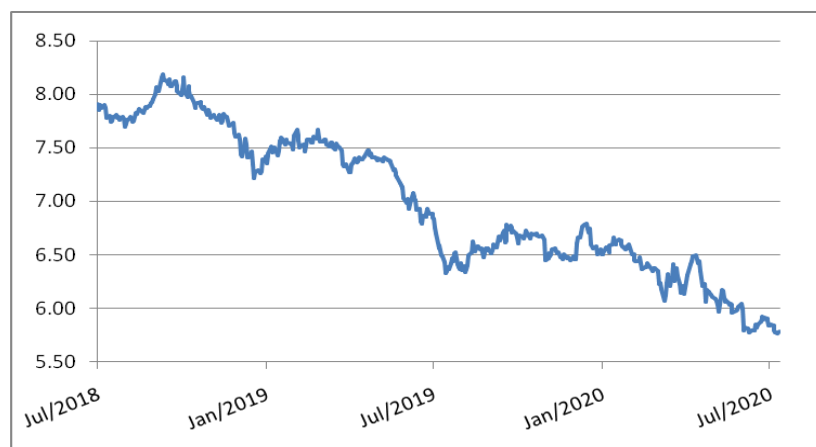
Equity FPI Inflows

Date	Rs Crore		
	Gross Purchases	Gross Sales	Net Investments
13-Jul-20	2590.2	3524.4	(934.3)
10-Jul-20	7660.0	4282.7	3377.3
09-Jul-20	5355.7	6415.2	(1059.5)
Total Jun-2020	170846.4	149014.5	21831.6
Total May-2020	130298.5	115729.8	14568.8
Total 2019	1437559.6	1336438.9	101120.8

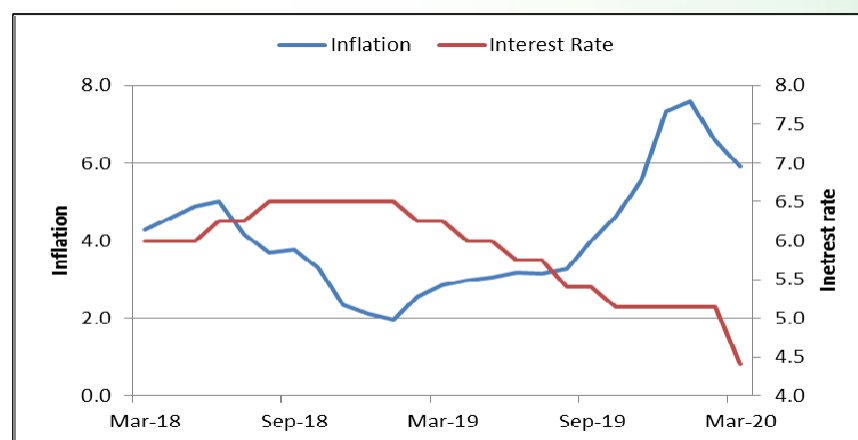
Debt Market

- ❖ Abundant liquidity kept short-term rates soft: RBI bulletin
- ❖ FPIs continue to remain net sellers of Indian debt
- ❖ Amfi hired agency to carry out valuation of market-linked debentures: Sebi
- ❖ City Union Bank gets board's approval to raise Rs 1,100 crore
- ❖ Bombay High Court dismisses Zee Learn's petition on moratorium on bonds

10-year G-sec yield



Inflation vs. Interest rate



Debt FPI Inflows

Debt Watch	Percent
Call rate	3.13
Repo rate	4.00
10 Yr Gsec yield	5.79
1-mth CP rate	3.24
3-mth CP rate	3.45
6-mth CP rate	4.10
1 Yr CP rate	4.10
1-mth CD rate	3.20
3-mth CD rate	3.21
6-mth CD rate	3.63
1 Yr CD rate	3.97

Auctions / Money Market Operation		
Date	Description	Amount(Cr)
Jul-14	G-sec auction	--
Jul-14	Total repo	--
Jul-14	Total reverse repo	6,26,368
Jul-14	Marginal standing facility	--
Jul-14	GOI surplus cash balance with RBI	--

Date	Rs Crore		
	Gross Purchases	Gross Sales	Net Investments
13-Jul-20	2018.9	1549.4	469.5
10-Jul-20	420.4	1939.6	(1519.2)
09-Jul-20	875.7	619.1	256.6
Total Jun-2020	21934.6	23479.5	(1545.0)
Total May-2020	16020.9	38955.9	(22935.0)
Total 2019	392458.9	366578.5	25880.4

Debt Fund Benchmark Indices

Market Indices	1 M (%)	1 Yr (%)	3 Yr (%)	5 Yr (%)
Crisil Composite Bond Fund Index	2.25	12.36	8.81	9.63
Crisil Short Term Bond Fund Index	1.97	11.47	8.52	8.68
Crisil ST Debt Hybrid 75+25 Index	3.47	8.58	7.70	8.53
Crisil Liquid Fund Index	0.35	5.71	6.77	7.00

Macro

- ❖ CPI-based inflation rose to 6.1% in June; food inflation eased to 7.9%
- ❖ Fasal Bima Yojana: FM stresses on need to release premium subsidy in time
- ❖ Govt working to select locations for bulk drug, medical device parks
- ❖ Indian industry welcomes UK govt's post-Brexit immigration regime
- ❖ Non-financial services sector may take 25% hit in revenue amid COVID-19 disruptions: Survey

	Q3 FY2020(%)	Q2 FY2020(%)	Q3 FY2019(%)
GDP growth	4.7	4.5	6.6

Commodity Prices				
	Current	Week ago	Month ago	Year ago
Brent crude(\$/bbl)	42.72	43.10	38.90	66.72
Gold (RS/10 gms)	49,079	48,168	47,337	34,583

	May - 20 (%)	Apr - 20 (%)	Year ago (%) (May - 19)
CPI (Food)	9.28%	--	3.05
WPI	-3.21	--	2.45
Core Sector Output	-23.40	-38.12	3.80
IIP	-34.70	-55.50	3.10

Global market trends

- ❖ US rejects Chinese claims in South China Sea, terms 'completely unlawful'
- ❖ US budget deficit hits all-time high of \$864 bn in June amid Covid pandemic
- ❖ Singapore economy enters recession, second-quarter GDP plunges record 41.2%
- ❖ S&P predicts 4.7% slump in emerging market growth, warns of permanent scars
- ❖ Russia's Covid-19 vaccine production likely in fall at earliest: Virologist

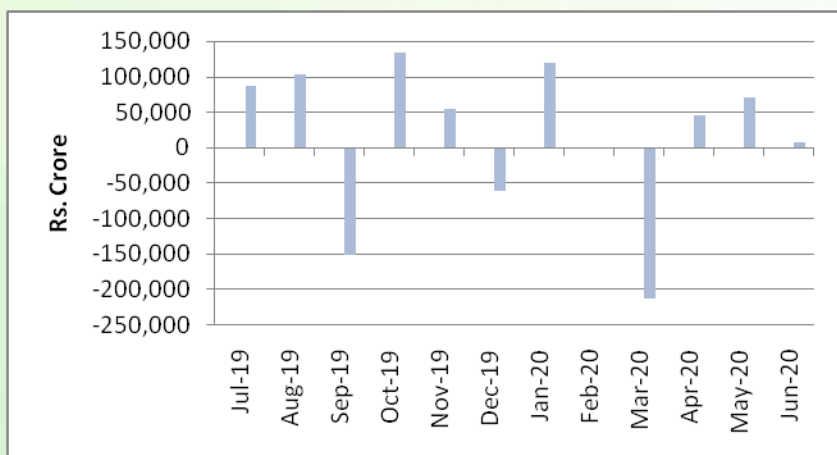
INR vs Global currency		
	Current	Prev close
USD	75.34	75.28
GBP	94.56	94.44
Euro	85.45	85.38
Yen	0.703	0.702
Yuan	10.77	10.76

Global equity benchmark indices returns(%)				
Benchmark	1 Day	1 Week	1 Month	1 Year
FTSE 100	1.33	-1.75	1.16	-17.72
Hang Seng	0.17	-2.15	6.05	-9.48
Nikkei 225	2.22	0.31	2.15	5.07
S&P 500	-0.94	-0.77	3.75	4.69
Shanghai Composite	1.77	3.31	17.93	17.50

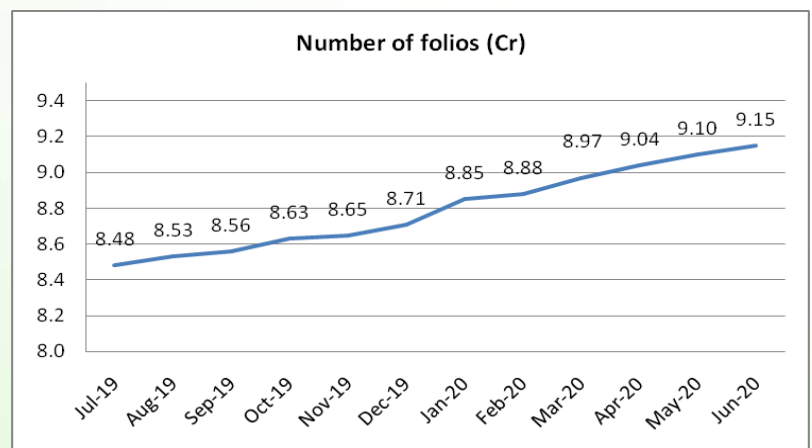
Mutual Fund Roundup

- ❖ Mutual Fund inflows crash in June to Rs 7,266 crore
- ❖ Equity mutual fund inflows fall sharply to Rs 240.6 crore; multi cap and large cap funds see high outflows
- ❖ Debt fund inflows at Rs 2,862 crore; Liquid funds see high outflow on account of advance tax payment
- ❖ Hybrid funds continue to bleed; Aggressive hybrid funds see outflow of Rs 1705 crore

Mutual fund inflows



Mutual fund folio growth



(Data source: NSE, NSDL, FIMMDA, investing.com, tradingeconomics.com, fx-rate.net, ACEMF, AMFI, RBI, equitymaster.com)

(News source: Economic Times, Business Standard)