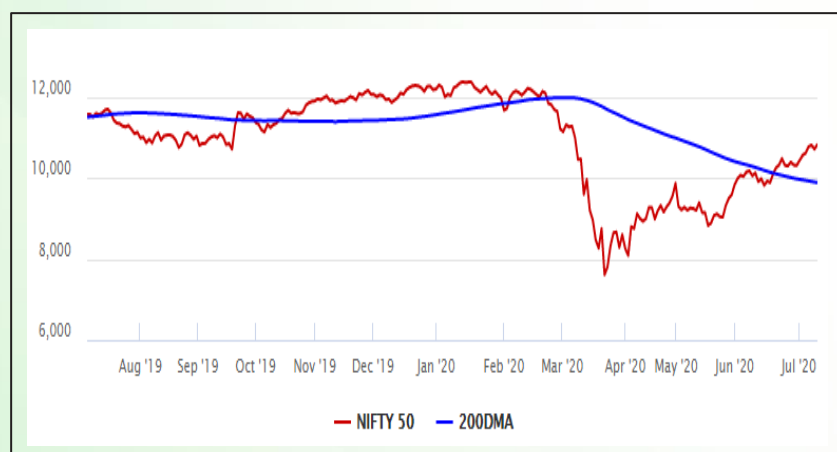


## Equity Market

- ❖ Sensex ends 409 points higher at 36,738
- ❖ Index VIX declined 5.15% to 24.76
- ❖ Nifty P/E at 28.26, Nifty Midcap 100 P/E at 131.23

### S&P CNX Nifty - 200 DMA



### Nifty Equity Benchmark Indices

Index	Current Value	% chg	52 wk high	52 wk low
Nifty 50	10813.5	1.01	12430.5	7511.1
Nifty Mid cap 100	15362.5	0.38	18495.9	10750.0
Nifty Small cap 100	4880.2	1.08	6401.1	3202.9
Bank	22907.2	1.43	32613.1	16116.3
Auto	7085.6	0.37	8501.2	4452.2
FMCG	30671.8	-0.33	32644.9	22699.1
Pharma	9987.6	0.39	10404.4	6242.9
Realty	204.8	0.52	336.4	160.9

## Factors driving the market

- ❖ Investor sentiment got a boost after PM Modi said India has started seeing green shots of economic recovery
- ❖ Financials stock gained the most lead by HDFC, SBI and Bajaj Finance
- ❖ Metal stocks shine as global metal prices jump; Hindalco, SAIL, Tata Stell, JSPL gain

### Nifty Top Gainers/Losers

Index	Value	52 wk high	52 wk low
<b>Top Gainers</b>			
Hindalco	165.2	221.2	84.9
HDFC	1944.5	2499.9	1473.5
SBI	199.9	373.8	149.5
<b>Top Losers</b>			
Bharti Infratel	215.1	296.5	120.1
Coal India	130.8	236.4	119.2
Tech Mahindra	576.5	845.9	471.4

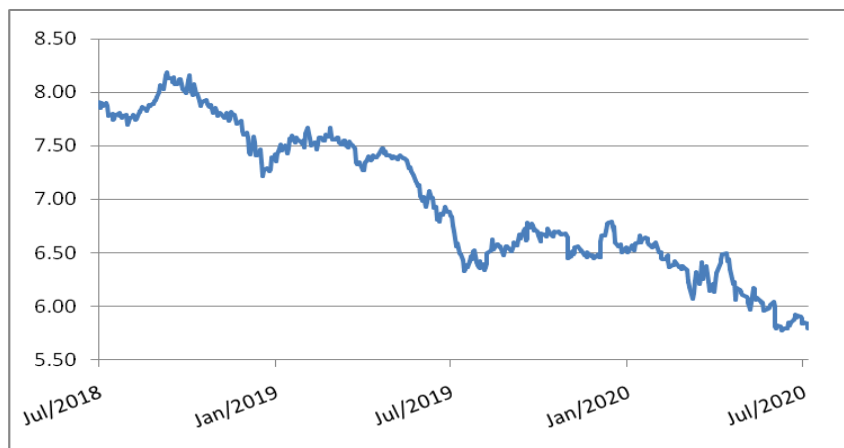
### Equity FPI Inflows

Date	Rs Crore		
	Gross Purchases	Gross Sales	Net Investments
09-Jul-20	5355.7	6415.2	(1059.5)
08-Jul-20	4039.1	5704.9	(1665.8)
07-Jul-20	4163.7	3687.7	476.0
Total Jun-2020	170846.4	149014.5	21831.6
Total May-2020	130298.5	115729.8	14568.8
Total 2019	1437559.6	1336438.9	101120.8

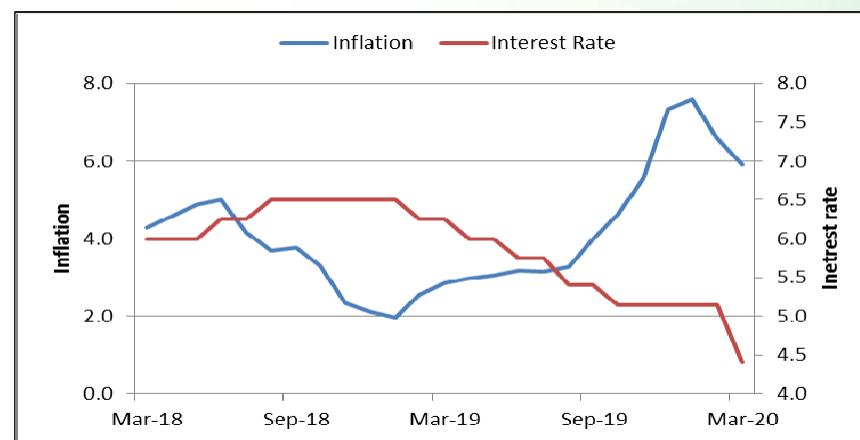
## Debt Market

- ❖ India Inc debt inches up 3.7% in FY20, deleveraging limited to a few firms
- ❖ PNB board approves Rs 10,000 crore fundraising plan through a mix of equity and debt
- ❖ PNB reports Rs 3,689 crore DHFL loan as fraud, it has already made provision for Rs 1,246 crore
- ❖ IRB Infra raises Rs 150 crore via NCDs
- ❖ Riskier bond sales jump to 15-month high in India on stimulus

## 10-year G-sec yield



## Inflation vs. Interest rate



## Debt FPI Inflows

Debt Watch	Percent
Call rate	3.16
Repo rate	4.00
10 Yr Gsec yield	5.77
1-mth CP rate	4.04
3-mth CP rate	3.45
6-mth CP rate	3.63
1 Yr CP rate	3.96
1-mth CD rate	3.20
3-mth CD rate	3.19
6-mth CD rate	3.50
1 Yr CD rate	3.98

Auctions / Money Market Operation		
Date	Description	Amount(Cr)
Jul-10	G-sec auction	--
Jul-10	Total repo	--
Jul-10	Total reverse repo	6,53,076
Jul-10	Marginal standing facility	600
Jul-10	GOI surplus cash balance with RBI	--

Date	Rs Crore		
	Gross Purchases	Gross Sales	Net Investments
09-Jul-20	875.7	619.1	256.6
08-Jul-20	1957.8	1984.5	(26.7)
07-Jul-20	1790.2	1014.0	776.2
Total Jun-2020	21934.6	23479.5	(1545.0)
Total May-2020	16020.9	38955.9	(22935.0)
Total 2019	392458.9	366578.5	25880.4

## Debt Fund Benchmark Indices

Market Indices	1 M (%)	1 Yr (%)	3 Yr (%)	5 Yr (%)
Crisil Composite Bond Fund Index	2.03	12.54	8.85	9.53
Crisil Short Term Bond Fund Index	1.94	11.47	8.54	8.64
Crisil ST Debt Hybrid 75+25 Index	3.34	8.65	7.91	8.59
Crisil Liquid Fund Index	0.37	5.74	6.78	7.01

## Macro

- ❖ Govt plans to raise Rs 20,000 crore by selling stakes in CIL, IDBI Bank
- ❖ India's fuel demand declines 7.9% yoy in June, consumption totals 16.29 MT
- ❖ U.S. in talks with India on market access, trade concessions: U.S. envoy
- ❖ India plans to enhance trade with Bangladesh
- ❖ India inflation likely slowed in June as output returns

	Q3 FY2020(%)	Q2 FY2020(%)	Q3 FY2019(%)
GDP growth	4.7	4.5	6.6

Commodity Prices				
	Current	Week ago	Month ago	Year ago
Brent crude(\$/bbl)	42.35	43.14	41.18	64.16
Gold (RS/10 gms)	49,054	48,173	46,588	34,075

	Apr - 20 (%)	Mar - 20 (%)	Year ago (%) (Apr - 19)
CPI	--	5.84	2.92
WPI	--	1.00	3.07
Core Sector Output	-38.12	-6.50	2.60
IIP	-55.50	-16.70	3.40

## Global market trends

- ❖ Australia suspends extradition treaty with Hong Kong; offers 10,000 visas
- ❖ Rishi Sunak warns of significant recession and jobs crunch in UK
- ❖ EU executive says "significant" differences in Brexit talks
- ❖ Chinese banks prepare contingency plans over threat of U.S. sanctions: Sources
- ❖ Federal Reserve officials suggest recovery of US economy may be stalling

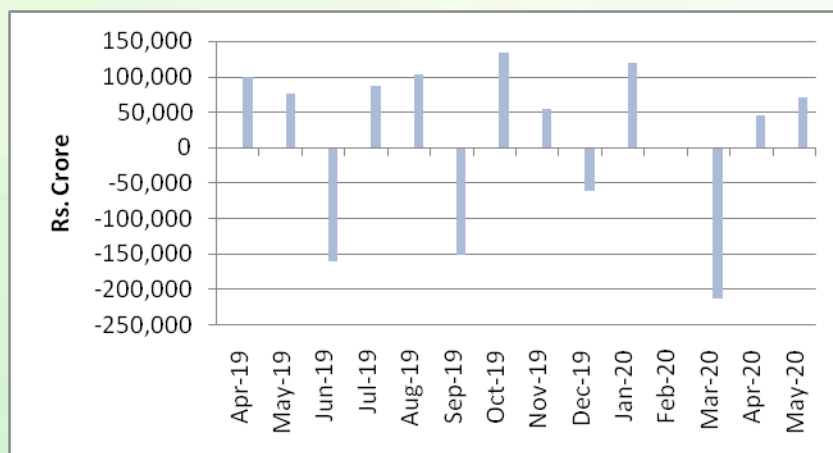
INR vs Global currency		
	Current	Prev close
USD	75.17	75.10
GBP	94.62	94.57
Euro	84.73	84.67
Yen	0.703	0.702
Yuan	10.73	10.73

Global equity benchmark indices returns(%)				
Benchmark	1 Day	1 Week	1 Month	1 Year
FTSE 100	-1.73	-3.06	-4.52	-19.73
Hang Seng	0.31	4.32	4.60	-6.78
Nikkei 225	0.40	1.73	-2.43	4.47
S&P 500	-0.56	0.70	-1.72	5.79
Shanghai Composite	1.39	11.65	16.73	17.84

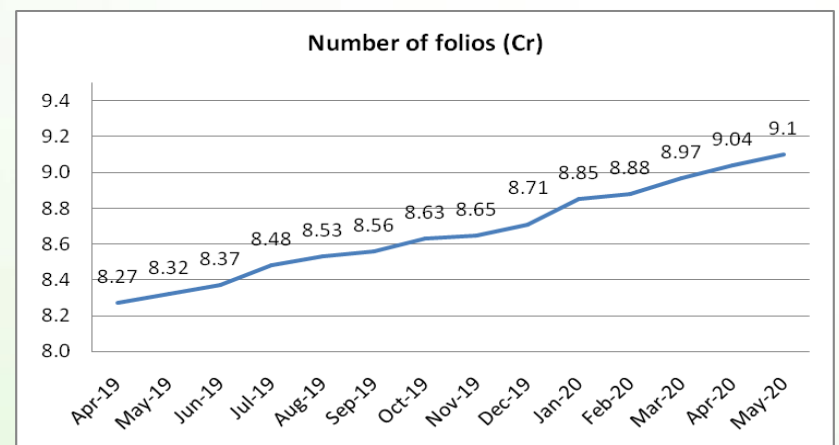
## Mutual Fund Roundup

- ❖ UTI MF to side-pocket debt exposure to Zee Learn following downgrade in two of its debt scheme
- ❖ Franklin MF in talks with bond issuers to list unlisted debt on bourses
- ❖ Franklin MF's 6 schemes expects to receive a total of Rs 6,000 crore until Sep 30
- ❖ Mutual fund industry AUM falls 8% to Rs 25 trillion in June quarter

### Mutual fund inflows



### Mutual fund folio growth



(Data source: NSE, NSDL, FIMMDA, investing.com, tradingeconomics.com, fx-rate.net, ACEMF, AMFI, RBI, equitymaster.com)

(News source: Economic Times, Business Standard)

For AMFI/NISM Certified partners only. For private circulation only.

Mutual Fund investments are subject to market risks, read all scheme related documents carefully.