

Equity Market

- ❖ Sensex slips 345 points to 36,329
- ❖ Index VIX rises 3.95% to 26.10
- ❖ Nifty P/E at 27.98, Nifty Midcap 100 P/E at 130.73

S&P CNX Nifty - 200 DMA



Nifty Equity Benchmark Indices

Index	Current Value	% chg	52 wk high	52 wk low
Nifty 50	10705.8	-0.87	12430.5	7511.1
Nifty Mid cap 100	15304.5	-0.39	18495.9	10750.0
Nifty Small cap 100	4827.8	-0.24	6401.1	3202.9
Bank	22584.7	-0.19	32613.1	16116.3
Auto	7059.4	-1.95	8501.2	4452.2
FMCG	30773.9	0.84	32644.9	22699.1
Pharma	9948.5	0.71	10404.4	6242.9
Realty	203.7	-1.95	336.4	160.9

Factors driving the market

- ❖ Market indices weighed down by weakness in world markets ahead of June quarter earnings season
- ❖ IT stocks declined as analysts expect companies to report 5-10% drop in revenue
- ❖ IndusInd Bk up 6% on reports that Route One Invst may raise stake

Nifty Top Gainers/Losers

Index	Value	52 wk high	52 wk low
Top Gainers			
IndusInd Bank	550.0	1596.6	235.6
Vedanta	110.5	175.9	60.2
JSW Steel	195.3	296.8	132.5
Top Losers			
Bajaj Finance	3197.0	4923.4	1783.0
ZEEL	172.0	405.2	114.0
Asian Paint	1689.0	1916.7	1291.3

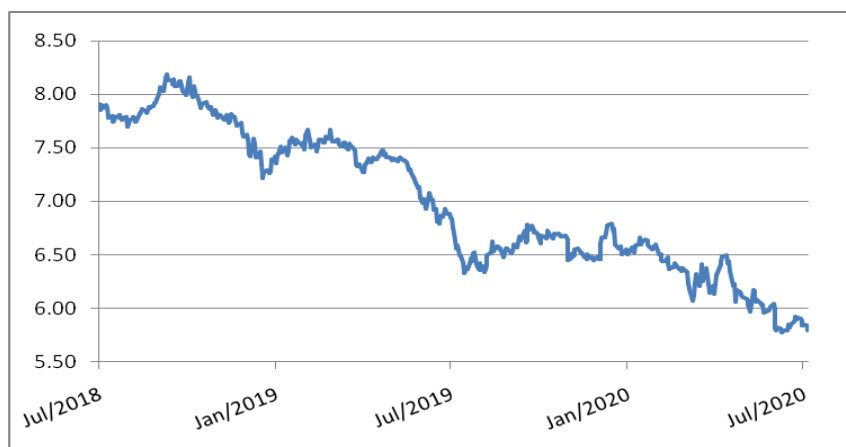
Equity FPI Inflows

Date	Rs Crore		
	Gross Purchases	Gross Sales	Net Investments
08-Jul-20	4039.1	5704.9	(1665.8)
07-Jul-20	4163.7	3687.7	476.0
06-Jul-20	3303.8	2683.1	620.7
Total Jun-2020	170846.4	149014.5	21831.6
Total May-2020	130298.5	115729.8	14568.8
Total 2019	1437559.6	1336438.9	101120.8

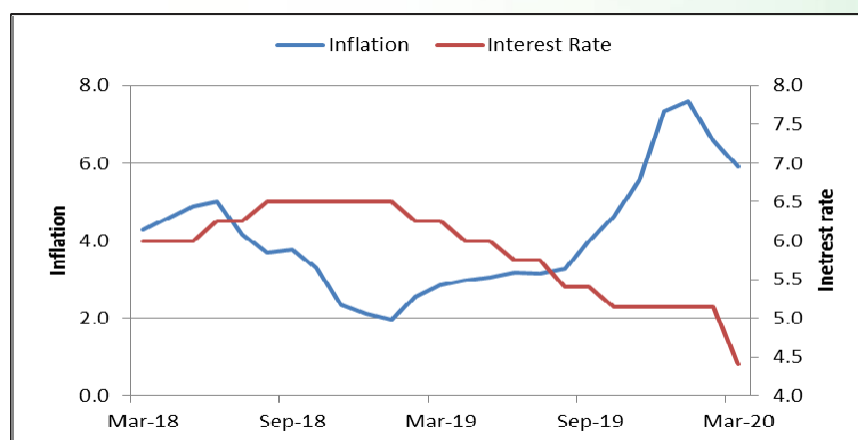
Debt Market

- ❖ State Bank of India cuts MCLR by 5-10 bps for shorter tenors
- ❖ Riskier bond sales jump to 15-month high in India on stimulus
- ❖ Reliance Capital defaults in interest payment on loans from HDFC, Axis Bank
- ❖ Covid-19 may turn extra Rs 1.67 trillion debt into delinquent assets: Ind-Ra
- ❖ Axis Bank seeks shareholders nod to raise Rs 50,000 crore via debt, equity

10-year G-sec yield



Inflation vs. Interest rate



Debt FPI Inflows

Debt Watch	Percent
Call rate	3.17
Repo rate	4.00
10 Yr Gsec yield	5.78
1-mth CP rate	3.65
3-mth CP rate	3.45
6-mth CP rate	3.63
1 Yr CP rate	3.96
1-mth CD rate	3.20
3-mth CD rate	3.19
6-mth CD rate	3.50
1 Yr CD rate	3.98

Auctions / Money Market Operation		
Date	Description	Amount(Cr)
Jul-09	G-sec auction	--
Jul-09	Total repo	--
Jul-09	Total reverse repo	6,60,605
Jul-09	Marginal standing facility	--
Jul-09	GOI surplus cash balance with RBI	--

Date	Rs Crore		
	Gross Purchases	Gross Sales	Net Investments
08-Jul-20	1957.8	1984.5	(26.7)
07-Jul-20	1790.2	1014.0	776.2
06-Jul-20	1415.6	1544.4	(128.8)
Total Jun-2020	21934.6	23479.5	(1545.0)
Total May-2020	16020.9	38955.9	(22935.0)
Total 2019	392458.9	366578.5	25880.4

Debt Fund Benchmark Indices

Market Indices	1 M (%)	1 Yr (%)	3 Yr (%)	5 Yr (%)
Crisil Composite Bond Fund Index	1.99	12.41	8.82	9.51
Crisil Short Term Bond Fund Index	1.83	11.40	8.50	8.62
Crisil ST Debt Hybrid 75+25 Index	2.76	8.37	7.80	8.50
Crisil Liquid Fund Index	0.37	5.75	6.78	7.01

Macro

- ❖ DPIIT may discuss 'country of origin' tag for e-sale with Consumer Ministry
- ❖ Centre may disburse Rs 10,000 cr worth of loans in FY21 under agri fund
- ❖ Projects including bullet train on track despite lockdown: Railways
- ❖ Govt clears affordable housing scheme, extends LPG, free grain benefits
- ❖ Govt calls off merger of Oriental Insurance, National Insurance Company, and United India Insurance Company

	Q3 FY2020(%)	Q2 FY2020(%)	Q3 FY2019(%)
GDP growth	4.7	4.5	6.6

Commodity Prices				
	Current	Week ago	Month ago	Year ago
Brent crude(\$/bbl)	43.29	42.03	40.76	64.11
Gold (RS/10 gms)	48,965	48,730	46,264	34,437

	Apr - 20 (%)	Mar - 20 (%)	Year ago (%) (Apr - 19)
CPI	--	5.84	2.92
WPI	--	1.00	3.07
Core Sector Output	-38.12	-6.50	2.60
IIP	-55.50	-16.70	3.40

Global market trends

- ❖ Wall Street ends higher on recovery hopes despite jump in Covid-19 cases
- ❖ Foreigners turn net buyers of Asian equities in June after 4 months
- ❖ Reducing debt will end poverty trap for poor nations: World Bank chief
- ❖ ADB plans to raise \$30-35 bn from capital mkt in 2020; sells \$4-bn bonds
- ❖ US and China impose visa restrictions on each other in Tibet row

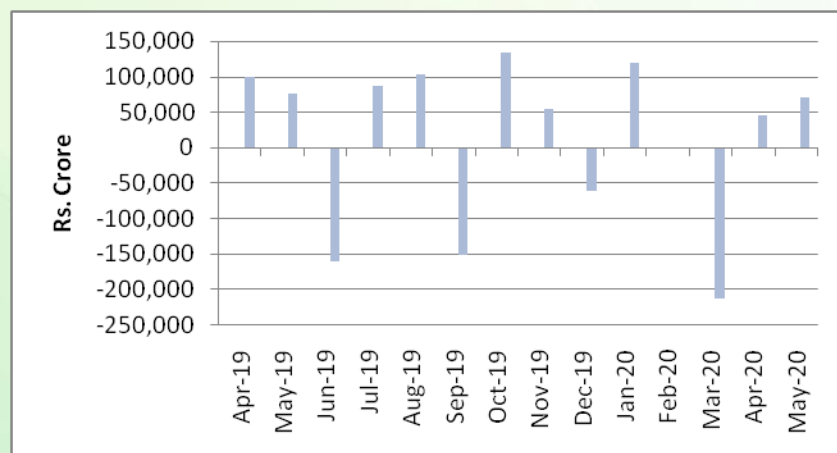
INR vs Global currency		
	Current	Prev close
USD	74.94	74.92
GBP	94.65	94.49
Euro	85.16	84.94
Yen	0.699	0.698
Yuan	10.73	10.71

Global equity benchmark indices returns(%)				
Benchmark	1 Day	1 Week	1 Month	1 Year
FTSE 100	-0.54	-0.03	-4.89	-18.45
Hang Seng	0.59	6.97	5.46	-7.77
Nikkei 225	-0.78	1.43	-3.19	4.20
S&P 500	0.78	1.74	-1.93	6.52
Shanghai Composite	1.74	12.47	15.85	16.03

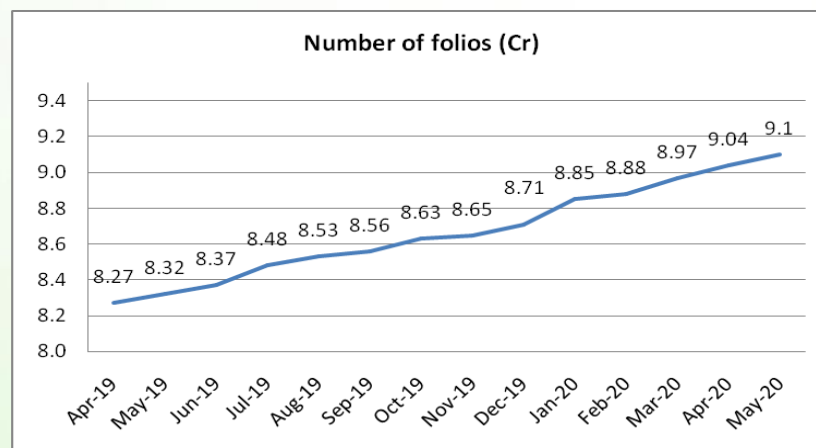
Mutual Fund Roundup

- ❖ UTI MF to side-pocket debt exposure to Zee Learn following downgrade
- ❖ Franklin MF in talks with bond issuers to list unlisted debt on bourses
- ❖ Franklin MF's 6 schemes expects to receive a total of Rs 6,000 crore until Sep 30
- ❖ Mutual fund industry AUM falls 8% to Rs 25 trillion in June quarter

Mutual fund inflows



Mutual fund folio growth



(Data source: NSE, NSDL, FIMMDA, investing.com, tradingeconomics.com, fx-rate.net, ACEMF, AMFI, RBI, equitymaster.com)

(News source: Economic Times, Business Standard)

For AMFI/NISM Certified partners only. For private circulation only.

Mutual Fund investments are subject to market risks, read all scheme related documents carefully.