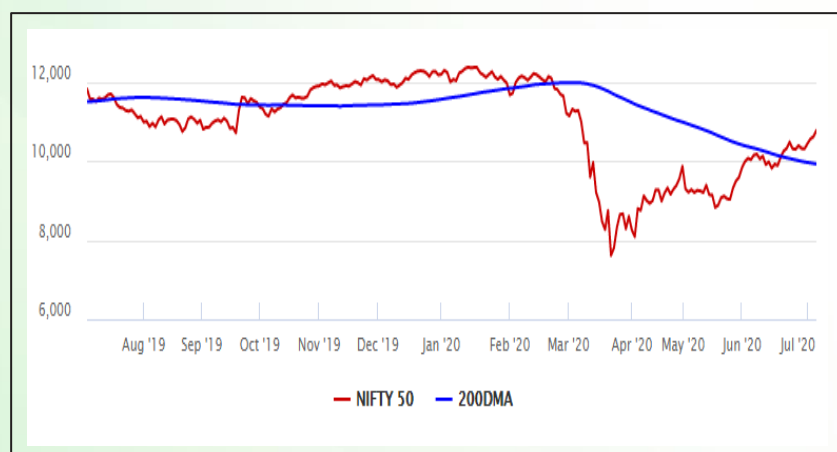


Equity Market

- ❖ Sensex takes winning run to 4th day, jumps 466 pts to end at 36,487
- ❖ Index VIX declines 2.71% to 25.07
- ❖ Nifty P/E at 28.13, Nifty Midcap 100 P/E at 130.31

S&P CNX Nifty - 200 DMA



Nifty Equity Benchmark Indices

Index	Current Value	% chg	52 wk high	52 wk low
Nifty 50	10763.7	1.47	12430.5	7511.1
Nifty Mid cap 100	15297.2	1.69	18495.9	10750.0
Nifty Small cap 100	4791.7	1.82	6401.1	3202.9
Bank	22,199.0	1.59	32613.1	16116.3
Auto	7171.8	2.88	8501.2	4452.2
FMCG	30647.7	0.39	32644.9	22699.1
Pharma	9901.3	-0.62	10404.4	6242.9
Realty	209.2	3.00	336.4	160.9

Factors driving the market

- ❖ Strong global cues and encouraging update by certain companies for Q1FY21 boosted investor sentiment
- ❖ HDFC bank rallied 3% on reporting strong loan growth of 21% y-o-y in Q1FY21
- ❖ PSU stocks at large witnessed a rally on hopes of orders from the government, BHEL soars 12%

Nifty Top Gainers/Losers

Index	Value	52 wk high	52 wk low
Top Gainers			
M&M	569.7	675.3	245.4
Bajaj Finance	3121.0	4923.4	1783.0
Hindalco	154.7	221.2	84.9
Top Losers			
Bajaj Auto	2901.0	3315.2	1788.7
GAIL	103.9	154.7	65.0
Bharti Airtel	575.9	612.0	321.2

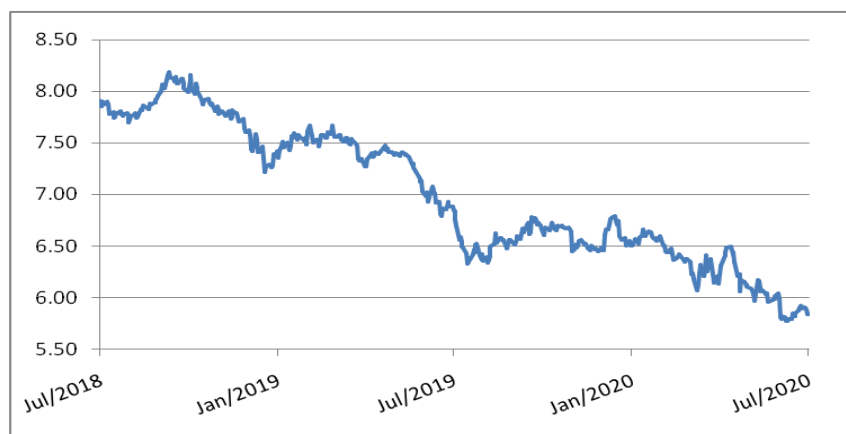
Equity FPI Inflows

Date	Rs Crore		
	Gross Purchases	Gross Sales	Net Investments
06-Jul-20	3303.8	2683.1	620.7
03-Jul-20	4015.8	4347.1	(331.3)
02-Jul-20	3670.0	5355.1	(1685.2)
Total Jun-2020	170846.4	149014.5	21831.6
Total May-2020	130298.5	115729.8	14568.8
Total 2019	1437559.6	1336438.9	101120.8

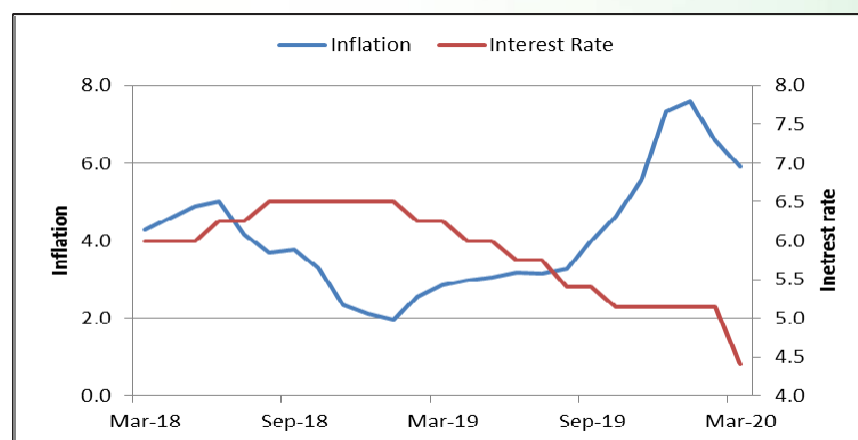
Debt Market

- ❖ Covid-19 may turn extra Rs 1.67 trillion debt into delinquent assets: Ind-Ra
- ❖ Axis Bank seeks shareholders nod to raise Rs 50,000 crore via debt, equity
- ❖ Torrent Power raises Rs 300 crore via NCDs
- ❖ India Ratings revises BHEL's credit rating to AA from AA+, reaffirms outlook to Negative
- ❖ CARE downgrades bank borrowings, NCDs of PNB Housing to AA from AA+

10-year G-sec yield



Inflation vs. Interest rate



Debt FPI Inflows

Debt Watch	Percent
Call rate	3.16
Repo rate	4.00
10 Yr Gsec yield	5.84
1-mth CP rate	3.65
3-mth CP rate	3.46
6-mth CP rate	3.60
1 Yr CP rate	3.96
1-mth CD rate	3.15
3-mth CD rate	3.19
6-mth CD rate	3.50
1 Yr CD rate	3.98

Auctions / Money Market Operation		
Date	Description	Amount(Cr)
Jul-07	G-sec auction	--
Jul-07	Total repo	--
Jul-07	Total reverse repo	6,75,131
Jul-07	Marginal standing facility	1,504
Jul-07	GOI surplus cash balance with RBI	--

Date	Rs Crore		
	Gross Purchases	Gross Sales	Net Investments
06-Jul-20	1415.6	1544.4	(128.8)
03-Jul-20	919.1	1042.0	(122.9)
02-Jul-20	1705.5	1343.0	362.5
Total Jun-2020	21934.6	23479.5	(1545.0)
Total May-2020	16020.9	38955.9	(22935.0)
Total 2019	392458.9	366578.5	25880.4

Debt Fund Benchmark Indices

Market Indices	1 M (%)	1 Yr (%)	3 Yr (%)	5 Yr (%)
Crisil Composite Bond Fund Index	1.57	12.53	8.70	9.42
Crisil Short Term Bond Fund Index	1.69	11.40	8.46	8.59
Crisil ST Debt Hybrid 75+25 Index	2.82	7.91	7.81	8.42
Crisil Liquid Fund Index	0.36	5.76	6.79	7.02

Macro

- ❖ India's coal imports decline 29.7% to 48.84 MT in April-June as compared to year ago period
- ❖ India's digital payment transactions jump 23% in last 30 days: Report
- ❖ Private trains to share gross revenue including onboard earnings with Railways
- ❖ Reliance, Sterlite, TechM set to power next-gen 5G telecom networks
- ❖ Extension of moratorium till Dec is the only viable option left: Bankers

	Q3 FY2020(%)	Q2 FY2020(%)	Q3 FY2019(%)
GDP growth	4.7	4.5	6.6

Commodity Prices				
	Current	Week ago	Month ago	Year ago
Brent crude(\$/bbl)	43.10	41.71	42.3	64.49
Gold (RS/10 gms)	48,168	48,376	46,525	34,437

	Apr - 20 (%)	Mar - 20 (%)	Year ago (%) (Apr - 19)
CPI	--	5.84	2.92
WPI	--	1.00	3.07
Core Sector Output	-38.12	-6.50	2.60
IIP	-55.50	-16.70	3.40

Global market trends

- ❖ Wall Street gains on strong services sector data; Dow, S&P rise over 1%
- ❖ Services activity in US jumped to 57.1 in June from 45.4 in May
- ❖ Emmanuel Macron creates three super ministries to lead coronavirus recovery
- ❖ Oil steady as hopeful economic data face spike in coronavirus cases
- ❖ Pakistan to avail of Rs 335-bn debt relief from G20

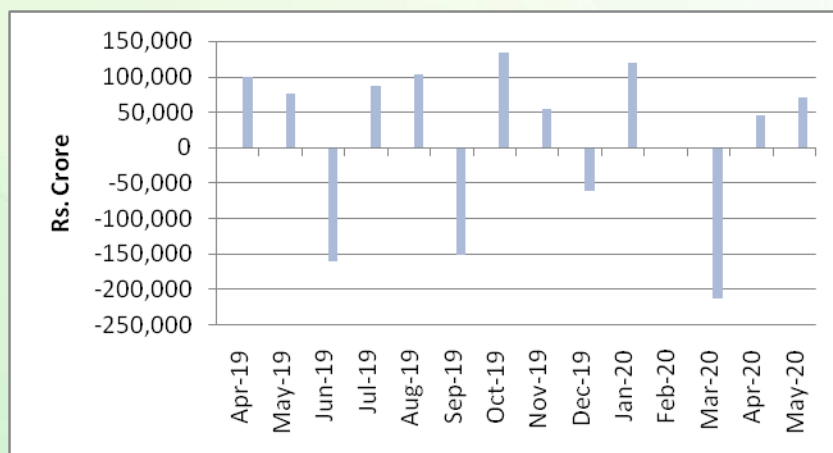
INR vs Global currency		
	Current	Prev close
USD	74.68	74.59
GBP	93.37	93.26
Euro	84.47	84.40
Yen	0.696	0.695
Yuan	10.65	10.64

Global equity benchmark indices returns(%)				
Benchmark	1 Day	1 Week	1 Month	1 Year
FTSE 100	2.09	0.97	-3.06	-16.78
Hang Seng	3.81	8.39	6.33	-8.46
Nikkei 225	1.83	3.27	-0.65	4.45
S&P 500	1.59	4.14	-0.44	6.33
Shanghai Composite	5.79	12.54	13.72	10.69

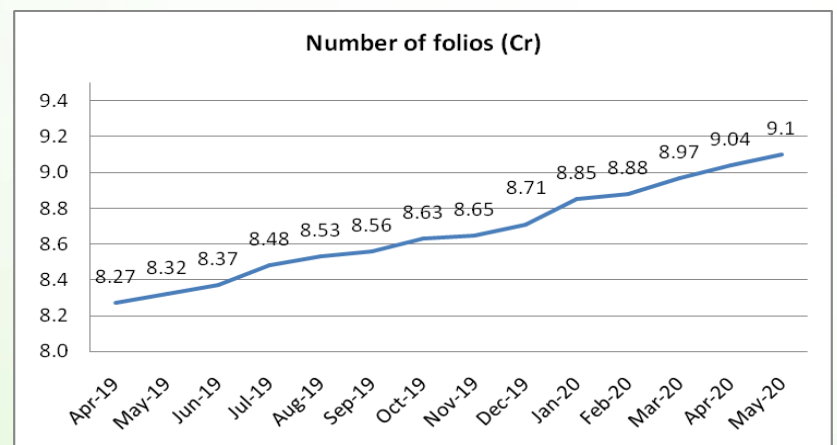
Mutual Fund Roundup

- ❖ Mutual fund industry AUM falls 8% to Rs 25 trillion in June quarter
- ❖ New stamp duty norms on shares, debentures, mutual fund units effective from July 1
- ❖ Sebi extends deadline for Franklin Templeton MF audit by about a month
- ❖ Sebi extends compliance timeline for portfolio managers by further three months till October 1

Mutual fund inflows



Mutual fund folio growth



(Data source: NSE, NSDL, FIMMDA, investing.com, tradingeconomics.com, fx-rate.net, ACEMF, AMFI, RBI, equitymaster.com)

(News source: Economic Times, Business Standard)