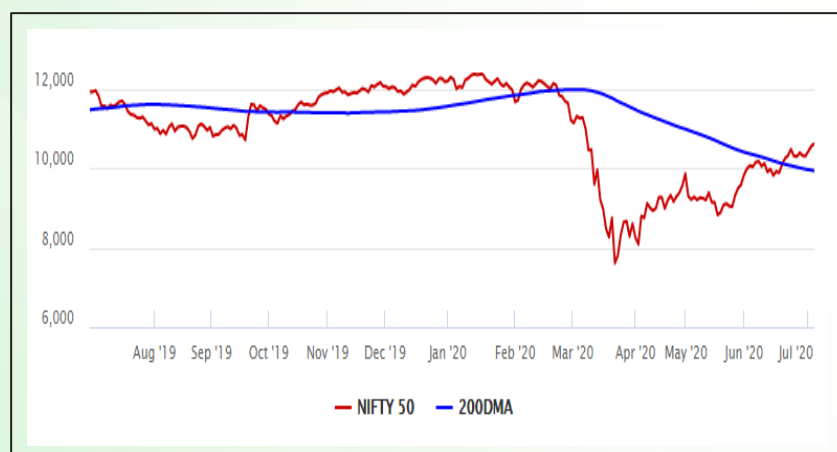


Equity Market

- ❖ Sensex ended 178 points higher at 36,110
- ❖ Index VIX dropped 3.06% to 25.77
- ❖ Nifty P/E at 27.78, Nifty Midcap 100 P/E at 24.25

S&P CNX Nifty - 200 DMA



Nifty Equity Benchmark Indices

Index	Current Value	% chg	52 wk high	52 wk low
Nifty 50	10607.4	0.53	12430.5	7511.1
Nifty Mid cap 100	15042.7	0.66	18495.9	10750.0
Nifty Small cap 100	4706.0	0.22	6401.1	3202.9
Bank	21852.4	-0.46	32613.1	16116.3
Auto	6971.1	0.93	8501.2	4452.2
FMCG	30529.1	0.70	32644.9	22699.1
Pharma	9963.4	0.20	10404.4	6242.9
Realty	203.1	1.02	336.4	160.9

Factors driving the market

- ❖ Buying in Auto, FMCG and IT counters lifted benchmark indices
- ❖ JSW Steel slips as crude steel production declines 30.2% in Q1 as compared to year ago period
- ❖ Defense shares rallied after MoD approved the purchase of weapons and equipments worth Rs 38,900 crore

Nifty Top Gainers/Losers

Index	Value	52 wk high	52 wk low
Top Gainers			
Eicher Motor	19121.0	23450.0	12450.1
Adani Ports	361.1	428.9	203.0
Bharti Airtel	581.3	612.0	321.2
Top Losers			
JSW Steel	191.0	296.8	132.5
Tata Steel	329.0	514.8	250.9
IndusInd Bank	487.5	1596.5	235.6

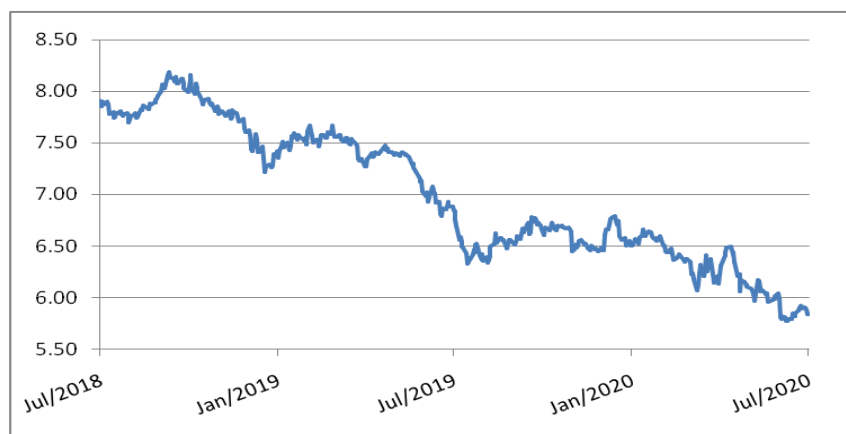
Equity FPI Inflows

Date	Rs Crore		
	Gross Purchases	Gross Sales	Net Investments
03-Jul-20	4015.8	4347.1	(331.3)
02-Jul-20	3670.0	5355.1	(1685.2)
01-Jul-20	4805.3	6748.1	(1942.8)
Total Jun-2020	170846.4	149014.5	21831.6
Total May-2020	130298.5	115729.8	14568.8
Total 2019	1437559.6	1336438.9	101120.8

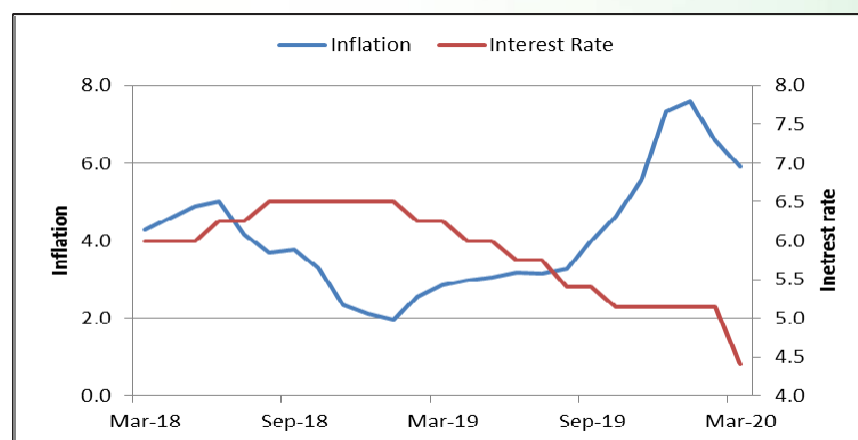
Debt Market

- ❖ Bond sales touch ₹2 trillion in Q1; RBI auction helps NBFCs raise funds
- ❖ HDFC Bank lends Rs 10,800 crore in June quarter; advances grow 21%
- ❖ CARE downgrades bank borrowings, NCDs of PNB Housing to AA from AA+
- ❖ DHFL defaults on NCD repayments of Rs 50 crore
- ❖ Sovereign gold bonds open for subscription today, issue price fixed at Rs 4,852 per gram

10-year G-sec yield



Inflation vs. Interest rate



Debt FPI Inflows

Debt Watch	Percent
Call rate	3.19
Repo rate	4.00
10 Yr Gsec yield	5.84
1-mth CP rate	3.18
3-mth CP rate	3.40
6-mth CP rate	3.60
1 Yr CP rate	3.96
1-mth CD rate	3.15
3-mth CD rate	3.16
6-mth CD rate	3.50
1 Yr CD rate	3.98

Auctions / Money Market Operation		
Date	Description	Amount(Cr)
Jul-06	G-sec auction	--
Jul-06	Total repo	--
Jul-06	Total reverse repo	7,05,324
Jul-06	Marginal standing facility	10
Jul-06	GOI surplus cash balance with RBI	--

Date	Rs Crore		
	Gross Purchases	Gross Sales	Net Investments
03-Jul-20	919.1	1042.0	(122.9)
02-Jul-20	1705.5	1343.0	362.5
01-Jul-20	911.9	935.3	(23.3)
Total Jun-2020	21934.6	23479.5	(1545.0)
Total May-2020	16020.9	38955.9	(22935.0)
Total 2019	392458.9	366578.5	25880.4

Debt Fund Benchmark Indices

Market Indices	1 M (%)	1 Yr (%)	3 Yr (%)	5 Yr (%)
Crisil Composite Bond Fund Index	1.53	13.11	8.74	9.42
Crisil Short Term Bond Fund Index	1.61	11.58	8.46	8.58
Crisil ST Debt Hybrid 75+25 Index	2.69	7.40	7.75	8.37
Crisil Liquid Fund Index	0.36	5.79	6.80	7.02

Macro

- ❖ India's Services PMI improves in June at 33.7 but remains in contraction zone for 4th consecutive month
- ❖ Vegetable prices rise up to 200%; trade blame crop damage and fuel price
- ❖ Proposal to merge CBDT, CBIC back on the table as government looks to cut cost
- ❖ Govt seeks stricter checks on Sri Lanka, Bangladesh, South Korea, Asean imports
- ❖ Extension of moratorium till Dec is the only viable option left: Bankers

	Q3 FY2020(%)	Q2 FY2020(%)	Q3 FY2019(%)
GDP growth	4.7	4.5	6.6

Commodity Prices				
	Current	Week ago	Month ago	Year ago
Brent crude(\$/bbl)	42.75	41.02	39.79	63.82
Gold (RS/10 gms)	48,227	48,117	46,609	34,134

	Apr - 20 (%)	Mar - 20 (%)	Year ago (%) (Apr - 19)
CPI	--	5.84	2.92
WPI	--	1.00	3.07
Core Sector Output	-38.12	-6.50	2.60
IIP	-55.50	-16.70	3.40

Global market trends

- ❖ German lawmakers finalize the country's long-awaited phase-out of coal as an energy source
- ❖ Trump extends Covid-19 relief package for small businesses
- ❖ UK factories increasingly plan lay-offs, to recover from Covid-19: Survey
- ❖ New N American free trade deal among US, Canada, Mexico comes into effect
- ❖ Oil prices mixed as coronavirus spike casts shadow over US demand

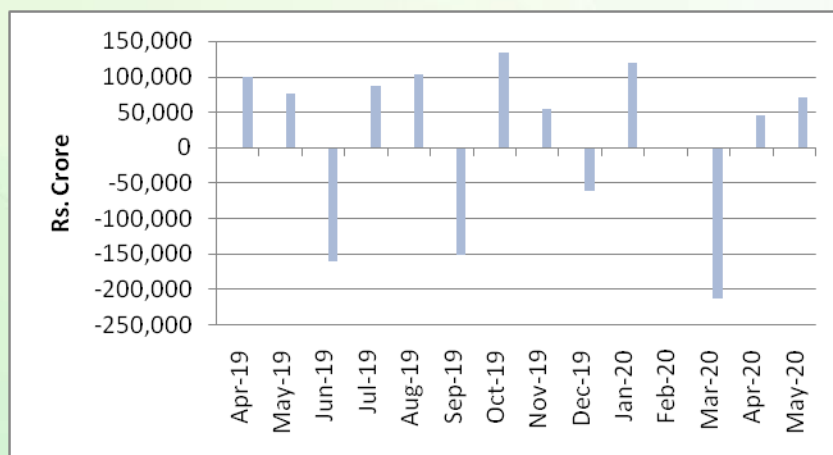
INR vs Global currency		
	Current	Prev close
USD	74.50	74.73
GBP	93.06	93.27
Euro	84.05	84.21
Yen	0.692	0.694
Yuan	10.56	10.59

Global equity benchmark indices returns(%)				
Benchmark	1 Day	1 Week	1 Month	1 Year
FTSE 100	-1.33	-0.03	-3.53	-19.08
Hang Seng	0.99	3.35	4.30	-12.07
Nikkei 225	0.72	-0.91	-1.36	3.09
S&P 500	--	4.02	0.23	4.48
Shanghai Composite	2.01	5.82	7.85	4.56

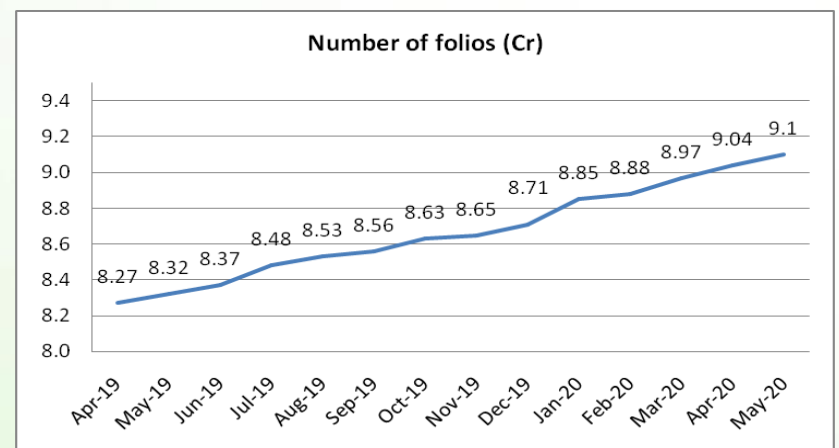
Mutual Fund Roundup

- ❖ Second tranche of Bharat Bond ETF NFOs to open from 14 July, will seek to raise up to Rs 14,000 crore
- ❖ New stamp duty norms on shares, debentures, mutual fund units effective from July 1
- ❖ Sebi extends deadline for Franklin Templeton MF audit by about a month
- ❖ Sebi extends compliance timeline for portfolio managers by further three months till October 1

Mutual fund inflows



Mutual fund folio growth



(Data source: NSE, NSDL, FIMMDA, investing.com, tradingeconomics.com, fx-rate.net, ACEMF, AMFI, RBI, equitymaster.com)

(News source: Economic Times, Business Standard)