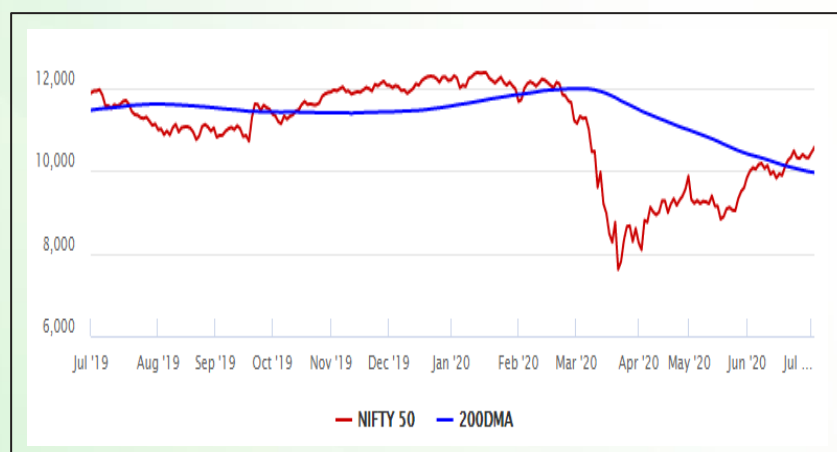


Equity Market

- ❖ Sensex gains 429 points to end at 35,844
- ❖ Index VIX drops 5.74% to 26.51
- ❖ Nifty P/E at 27.63, Nifty Midcap 100 P/E at 24.25

S&P CNX Nifty - 200 DMA



Nifty Equity Benchmark Indices

Index	Current Value	% chg	52 wk high	52 wk low
Nifty 50	10551.7	1.17	12430.5	7511.1
Nifty Mid cap 100	14944.8	1.13	18495.9	10750.0
Nifty Small cap 100	4695.7	0.89	6401.1	3202.9
Bank	21953.2	-0.11	32613.1	16116.3
Auto	6907.1	2.81	8501.2	4452.2
FMCG	30316.2	0.28	32644.9	22699.1
Pharma	9943.7	0.62	10404.4	6242.9
Realty	201.1	-0.07	336.4	160.9

Factors driving the market

- ❖ Firm global cues on encouraging vaccine trials lifted investor sentiments
- ❖ Auto stocks rally on pick up in sales in June; Mahindra & Mahindra, Hero MotoCorp top gainer
- ❖ IT stocks extend gains; Infy rallies 9%, TCS surges 7% in one week

Nifty Top Gainers/Losers

Index	Value	52 wk high	52 wk low
Top Gainers			
M&M	531.0	675.3	245.4
Hero MotoCorp	2680.0	3022.9	1475.0
Cipla	651.0	692.5	355.3
Top Losers			
Axis Bank	424.8	813.0	286.0
UPL	447.0	709.1	240.2
Vedanta	106.8	175.9	60.2

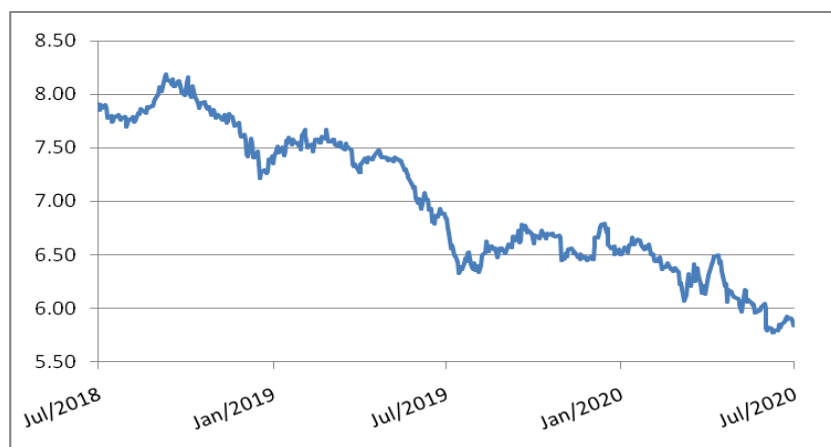
Equity FPI Inflows

Date	Rs Crore		
	Gross Purchases	Gross Sales	Net Investments
02-Jul-20	3670.0	5355.1	(1685.2)
01-Jul-20	4805.3	6748.1	(1942.8)
30-Jun-20	5411.1	5515.1	(104)
Total Jun-2020	170846.4	149014.5	21831.6
Total May-2020	130298.5	115729.8	14568.8
Total 2019	1437559.6	1336438.9	101120.8

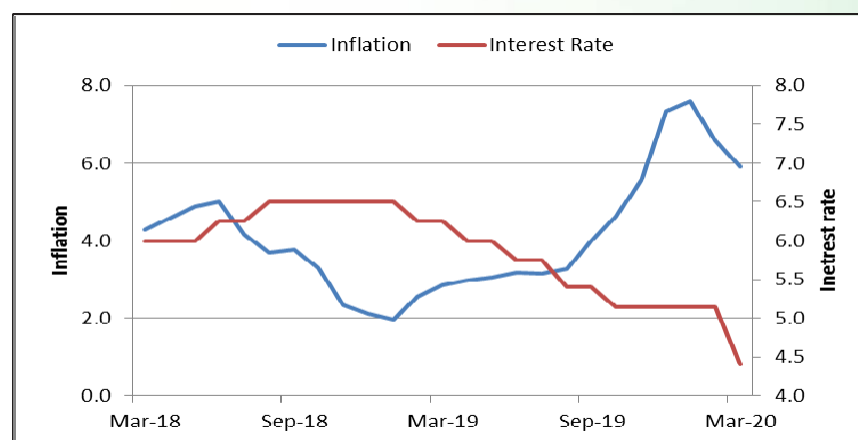
Debt Market

- ❖ Bond sales touch ₹2 trillion in Q1; RBI auction helps NBFCs raise funds
- ❖ India may ease regulatory pricing cap for External Commercial Borrowings (ECBs)
- ❖ Rating firms seek to withdraw credit ratings where issuers don't provide enough information
- ❖ NBFCs, HFCs with more than 6pc net NPAs won't be eligible for special liquidity scheme: RBI
- ❖ Jindal Steel & Power aims to reduce debt to below Rs 25,000 crore by March 2021

10-year G-sec yield



Inflation vs. Interest rate



Debt FPI Inflows

Debt Watch	Percent
Call rate	2.97
Repo rate	4.00
10 Yr Gsec yield	5.84
1-mth CP rate	3.16
3-mth CP rate	3.40
6-mth CP rate	3.62
1 Yr CP rate	3.96
1-mth CD rate	4.05
3-mth CD rate	3.51
6-mth CD rate	3.78
1 Yr CD rate	3.98

Auctions / Money Market Operation		
Date	Description	Amount(Cr)
Jul-03	G-sec auction	--
Jul-03	Total repo	--
Jul-03	Total reverse repo	7,08,302
Jul-03	Marginal standing facility	50
Jul-03	GOI surplus cash balance with RBI	--

Date	Rs Crore		
	Gross Purchases	Gross Sales	Net Investments
02-Jul-20	1705.5	1343.0	362.5
01-Jul-20	911.9	935.3	(23.3)
30-Jun-20	2542.3	1566.5	975.7
Total Jun-2020	21934.6	23479.5	(1545.0)
Total May-2020	16020.9	38955.9	(22935.0)
Total 2019	392458.9	366578.5	25880.4

Debt Fund Benchmark Indices

Market Indices	1 M (%)	1 Yr (%)	3 Yr (%)	5 Yr (%)
Crisil Composite Bond Fund Index	1.57	13.31	8.63	9.44
Crisil Short Term Bond Fund Index	1.60	11.63	8.40	8.58
Crisil ST Debt Hybrid 75+25 Index	2.73	7.31	7.75	8.36
Crisil Liquid Fund Index	0.36	5.80	6.80	7.03

Macro

- ❖ Modi, Putin discuss Covid-19 crisis, vow to boost Indo-Russia ties
- ❖ India needs Rs 50-60 lakh cr foreign investments to bolster coronavirus-hit economy: Nitin Gadkari
- ❖ We're optimistic about a V-shaped recovery in India: Expenditure Secretary TV Somanathan
- ❖ India has accumulated the world's fifth-largest foreign exchange reserves at more than \$500 billion
- ❖ India's fuel sales in June at 88% of pre-Covid levels, says govt

	Q3 FY2020(%)	Q2 FY2020(%)	Q3 FY2019(%)
GDP growth	4.7	4.5	6.6

Commodity Prices				
	Current	Week ago	Month ago	Year ago
Brent crude(\$/bbl)	42.76	41.05	39.60	62.4
Gold (RS/10 gms)	48,173	48,021	40,989	33,577

	Apr - 20 (%)	Mar - 20 (%)	Year ago (%) (Apr - 19)
CPI	--	5.84	2.92
WPI	--	1.00	3.07
Core Sector Output	-38.12	-6.50	2.60
IIP	-55.50	-16.70	3.40

Global market trends

- ❖ Wall Street jumps at open on strong US jobs report; Nasdaq hits record high
- ❖ UK factories increasingly plan lay-offs, to recover from Covid-19: Survey
- ❖ US trade deficit rises 9.7% in May to \$54.6 billion
- ❖ New N American free trade deal among US, Canada, Mexico comes into effect
- ❖ Oil rises on positive US economic data; Covid-19 concerns limit gains

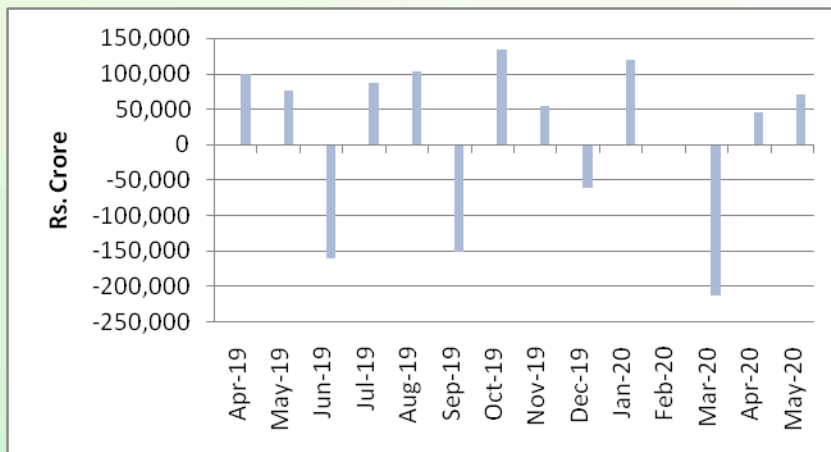
INR vs Global currency		
	Current	Prev close
USD	74.69	74.68
GBP	93.08	93.07
Euro	83.89	83.96
Yen	0.695	0.694
Yuan	10.57	10.57

Global equity benchmark indices returns(%)				
Benchmark	1 Day	1 Week	1 Month	1 Year
FTSE 100	1.34	1.52	0.33	-17.45
Hang Seng	2.85	1.38	4.70	-12.99
Nikkei 225	0.11	-0.51	-0.80	1.80
S&P 500	0.45	1.50	1.60	5.28
Shanghai Composite	2.13	3.73	5.79	1.53

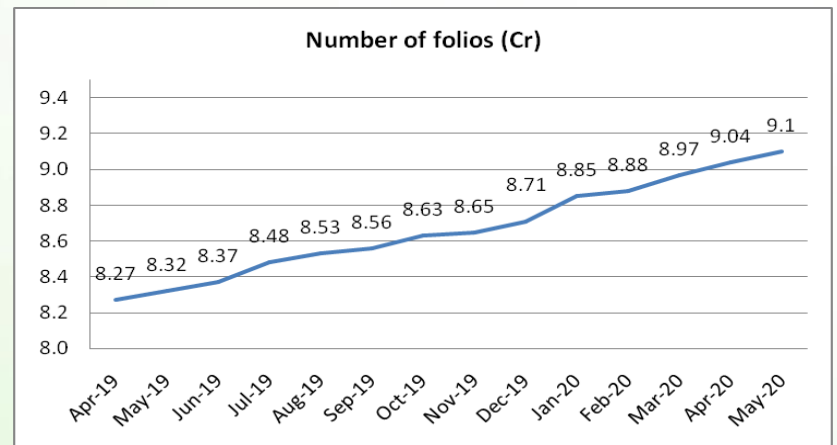
Mutual Fund Roundup

- ❖ New stamp duty norms on shares, debentures, mutual fund units effective from July 1
- ❖ Sebi extends deadline for Franklin Templeton MF audit by about a month
- ❖ Sebi extends compliance timeline for portfolio managers by further three months till October 1
- ❖ Franklin Templeton crisis: SC transfers all cases against the AMC to Karnataka High Court

Mutual fund inflows



Mutual fund folio growth



(Data source: NSE, NSDL, FIMMDA, investing.com, tradingeconomics.com, fx-rate.net, ACEMF, AMFI, RBI, equitymaster.com)

(News source: Economic Times, Business Standard)

For AMFI/NISM Certified partners only. For private circulation only.

Mutual Fund investments are subject to market risks, read all scheme related documents carefully.