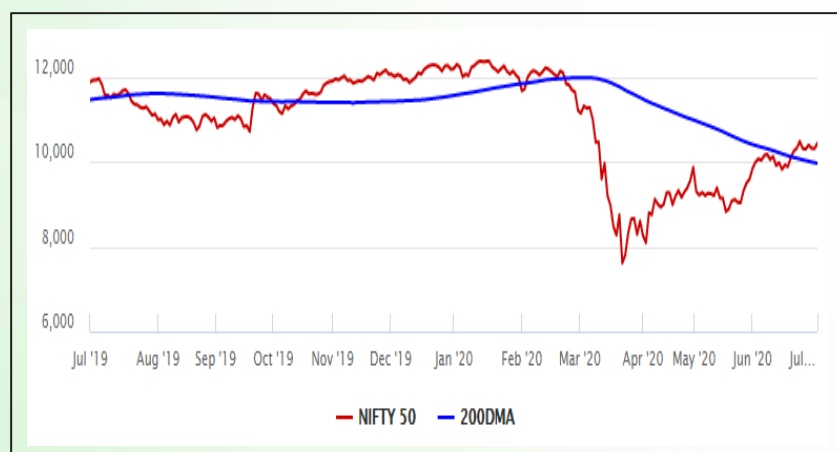


## Equity Market

- ❖ Sensex rallies 499 points to 35,414
- ❖ Index VIX declines 3.46% to 28.12
- ❖ Nifty P/E at 26.97, Nifty Midcap 100 P/E at 24.25

### S&P CNX Nifty - 200 DMA



### Nifty Equity Benchmark Indices

Index	Current Value	% chg	52 wk high	52 wk low
Nifty 50	10430.1	1.24	12430.5	7511.1
Nifty Mid cap 100	14777.7	0.50	18495.9	10750.0
Nifty Small cap 100	4654.1	0.85	6401.1	3202.9
Bank	21977.6	2.84	32613.1	16116.3
Auto	6718.7	-0.01	8501.2	4452.2
FMCG	30232.5	0.56	32644.9	22699.1
Pharma	9882.9	-1.02	10404.4	6242.9
Realty	201.2	-0.72	336.4	160.9

## Factors driving the market

- ❖ Improved Manufacturing PMI data and better June GST collection for June boosted investor sentiment
- ❖ Banking and Finance stocks rallied the most led by Axis Bank
- ❖ Reliance up nearly 1% as it nears deal to acquire retail business of Future Group

### Nifty Top Gainers/Losers

Index	Value	52 wk high	52 wk low
<b>Top Gainers</b>			
Axis Bank	432.5	819.0	286.0
UPL	447.6	709.1	240.2
Bajaj Finserv	6148.9	9950.0	3985.3
<b>Top Losers</b>			
NTPC	93.8	145.9	73.2
Nestle India	16820.0	18370.0	11265.0
L&T	924.9	1591.7	661.0

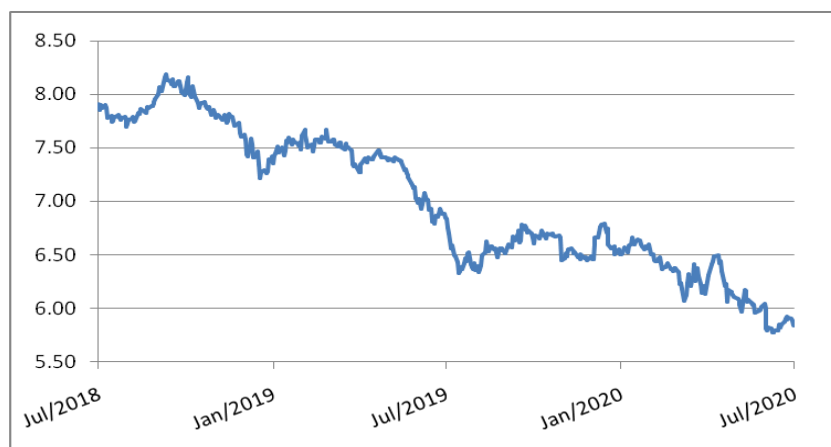
### Equity FPI Inflows

Date	Rs Crore		
	Gross Purchases	Gross Sales	Net Investments
01-Jul-20	4805.3	6748.1	(1942.8)
30-Jun-20	5411.1	5515.1	(104)
29-Jun-20	4749.3	5707.1	(957.9)
Total Jun-2020	170846.4	149014.5	21831.6
Total May-2020	130298.5	115729.8	14568.8
Total 2019	1437559.6	1336438.9	101120.8

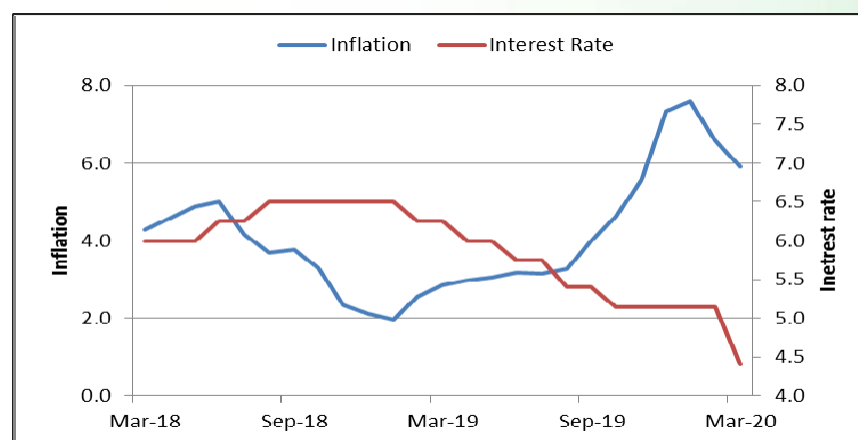
## Debt Market

- ❖ RBI to conduct Operation Twist worth Rs 10,000 crore today
- ❖ India's external debt stood at USD 558.5 billion in March: RBI data
- ❖ NBFCs, HFCs with more than 6pc net NPAs won't be eligible for special liquidity scheme: RBI
- ❖ Suzlon Energy completes debt restructuring as promoters satisfy capital infusion condition
- ❖ Jindal Steel & Power aims to reduce debt to below Rs 25,000 crore by March 2021

## 10-year G-sec yield



## Inflation vs. Interest rate



## Debt FPI Inflows

Debt Watch	Percent
Call rate	2.97
Repo rate	4.00
10 Yr Gsec yield	5.84
1-mth CP rate	3.16
3-mth CP rate	4.10
6-mth CP rate	3.62
1 Yr CP rate	3.96
1-mth CD rate	4.05
3-mth CD rate	3.51
6-mth CD rate	3.78
1 Yr CD rate	4.10

Auctions / Money Market Operation		
Date	Description	Amount(Cr)
Jul-02	G-sec auction	--
Jul-02	Total repo	--
Jul-02	Total reverse repo	6,93,296
Jul-02	Marginal standing facility	--
Jul-02	GOI surplus cash balance with RBI	--

Date	Rs Crore		
	Gross Purchases	Gross Sales	Net Investments
01-Jul-20	911.9	935.3	(23.3)
30-Jun-20	2542.3	1566.5	975.7
29-Jun-20	1550.0	1346.6	203.4
Total Jun-2020	21934.6	23479.5	(1545.0)
Total May-2020	16020.9	38955.9	(22935.0)
Total 2019	392458.9	366578.5	25880.4

## Debt Fund Benchmark Indices

Market Indices	1 M (%)	1 Yr (%)	3 Yr (%)	5 Yr (%)
Crisil Composite Bond Fund Index	1.53	13.35	8.61	9.45
Crisil Short Term Bond Fund Index	1.50	11.57	8.37	8.57
Crisil ST Debt Hybrid 75+25 Index	2.72	7.05	7.62	8.29
Crisil Liquid Fund Index	0.36	5.81	6.81	7.03

## Macro

- ❖ June manufacturing PMI at 47.2, up from 30.8 in May and 27.4 in April
- ❖ June GST collection at 90,917 crore, just 9% down on y-o-y basis
- ❖ Govt approves scheme to improve liquidity position of NBFCs, says RBI
- ❖ Customs told to clear all Chinese shipments with entry bills till June 30
- ❖ India's fuel sales in June at 88% of pre-Covid levels, says govt

	Q3 FY2020(%)	Q2 FY2020(%)	Q3 FY2019(%)
GDP growth	4.7	4.5	6.6

Commodity Prices				
	Current	Week ago	Month ago	Year ago
Brent crude(\$/bbl)	41.91	40.26	38.32	65.06
Gold (RS/10 gms)	48,730	48,389	40,989	33,549

	Apr - 20 (%)	Mar - 20 (%)	Year ago (%) (Apr - 19)
CPI	--	5.84	2.92
WPI	--	1.00	3.07
Core Sector Output	-38.12	-6.50	2.60
IIP	-55.50	-16.70	3.40

## Global market trends

- ❖ S&P, Nasdaq higher on Covid-19 vaccine hopes, improving economic data
- ❖ U.S. manufacturing activity hits 14-month high in June with an index reading of 52.6
- ❖ OPEC cut production by 1.93 million barrels a day to 22.69 million a day last month on demand slump
- ❖ UK PM Johnson unveils 5 billion-pound plan to fuel economic recovery
- ❖ World Bank approves US \$500 mn budgetary support for Pak to tackle Covid-19

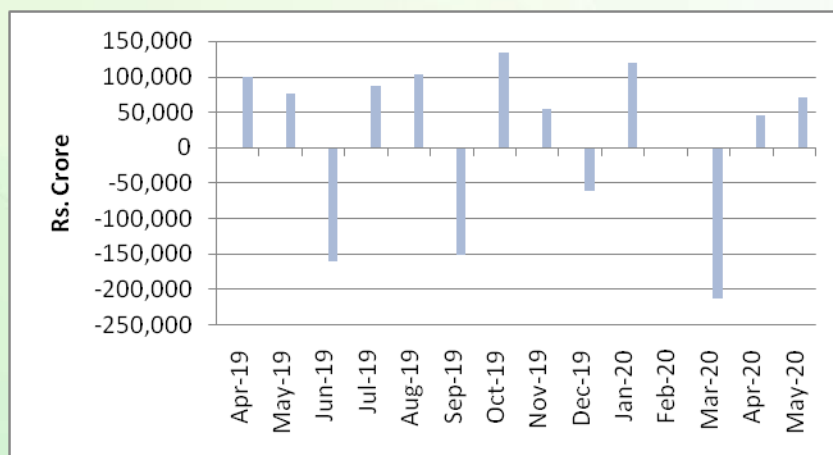
INR vs Global currency		
	Current	Prev close
USD	75.52	75.47
GBP	94.35	94.17
Euro	85.07	84.95
Yen	0.703	0.702
Yuan	10.68	10.68

Global equity benchmark indices returns(%)				
Benchmark	1 Day	1 Week	1 Month	1 Year
FTSE 100	-0.19	0.56	-0.14	-17.87
Hang Seng	--	-0.86	5.84	-14.86
Nikkei 225	-0.75	-1.83	0.27	1.80
S&P 500	0.50	2.15	1.97	5.11
Shanghai Composite	1.38	1.56	3.79	-0.62

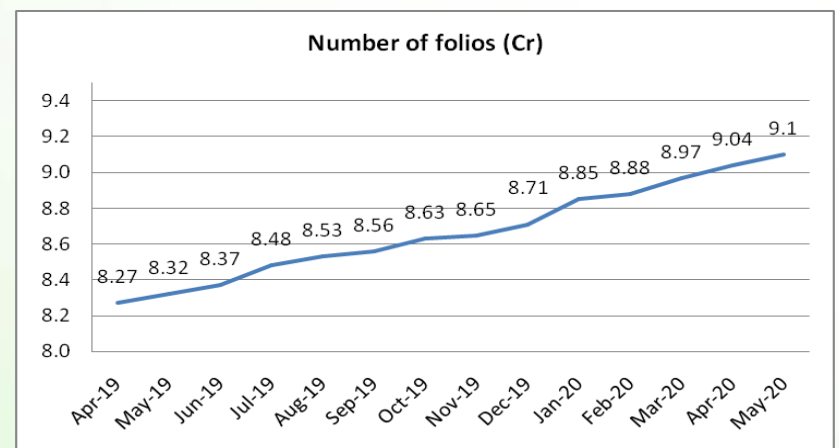
## Mutual Fund Roundup

- ❖ New stamp duty norms on shares, debentures, mutual fund units effective from July 1
- ❖ Sebi extends deadline for Franklin Templeton MF audit by about a month
- ❖ Sebi extends compliance timeline for portfolio managers by further three months till October 1
- ❖ Franklin Templeton crisis: SC transfers all cases against the AMC to Karnataka High Court

### Mutual fund inflows



### Mutual fund folio growth



(Data source: NSE, NSDL, FIMMDA, investing.com, tradingeconomics.com, fx-rate.net, ACEMF, AMFI, RBI, equitymaster.com)

(News source: Economic Times, Business Standard)

For AMFI/NISM Certified partners only. For private circulation only.

Mutual Fund investments are subject to market risks, read all scheme related documents carefully.