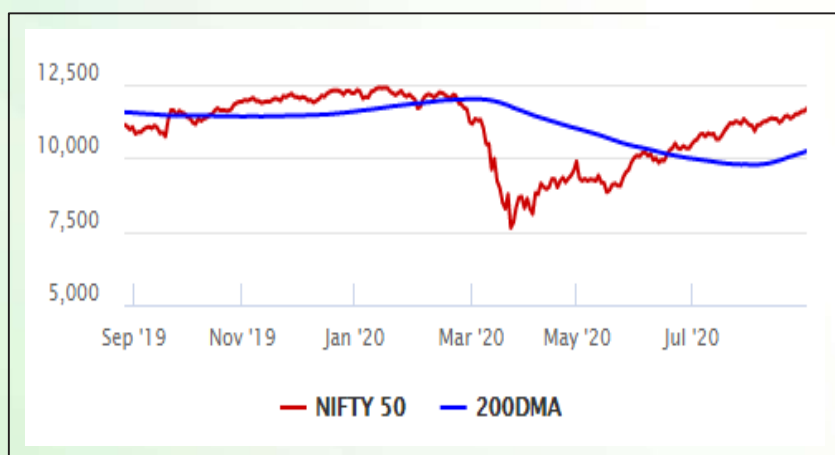


Equity Market

- ❖ Sensex gains for 6th day, up 354 points to 39,467
- ❖ Index VIX declines 3.44% to 18.35
- ❖ Nifty P/E at 32.92, Nifty Midcap 100 P/E at 130.66

S&P CNX Nifty - 200 DMA



Nifty Equity Benchmark Indices

Index	Current Value	% chg	52 wk high	52 wk low
Nifty 50	11647.6	0.83	12430.5	7511.1
Nifty Mid cap 100	17369.1	0.58	18495.9	10750.0
Nifty Small cap 100	5867.3	-0.20	6401.1	3202.9
Bank	24523.8	4.19	32613.1	16116.3
Auto	8111.9	-0.79	8501.2	4452.2
FMCG	31253.5	-0.20	32644.9	22699.1
Pharma	11622.9	0.26	10497.2	6242.9
Realty	233.1	0.06	336.4	160.9

Factors driving the market

- ❖ Market soared as US Fed and RBI showed their willingness to support Covid hit economy
- ❖ IndusInd Bank top gainer, surges 12%; Axis Bank, SBI, ICICI Bank jump
- ❖ Telecom stocks advance ahead of AGR verdict, Voda Idea jumps 17%

Nifty Top Gainers/Losers

Index	Value	52 wk high	52 wk low
Top Gainers			
IndusInd Bank	679.1	1596.6	235.6
Axis Bank	510.3	765.9	286.0
UPL	520.3	617.8	240.2
Top Losers			
JSW Steel	280.6	296.8	132.5
Hero MotoCorp	3068.2	3181.4	1475.0
Power Grid	182.5	211.3	122.2

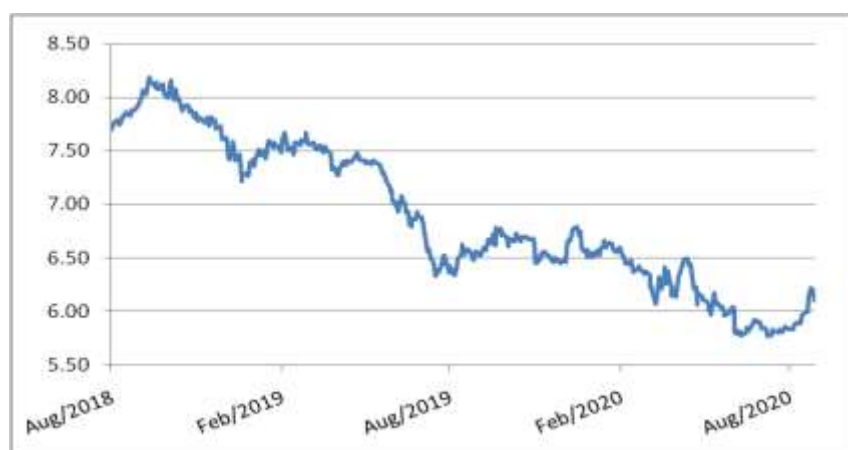
Equity FPI Inflows

Date	Rs Crore		
	Gross Purchases	Gross Sales	Net Investments
28-Aug-20	7195.8	5763.2	1432.6
27-Aug-20	6834.6	5180.5	1654.1
26-Aug-20	5740.3	3986.6	7153.7
Total Jul-2020	119628.6	112065.9	7562.7
Total Jun-2020	170846.4	149014.5	21831.6
Total 2019	1437559.6	1336438.9	101120.8

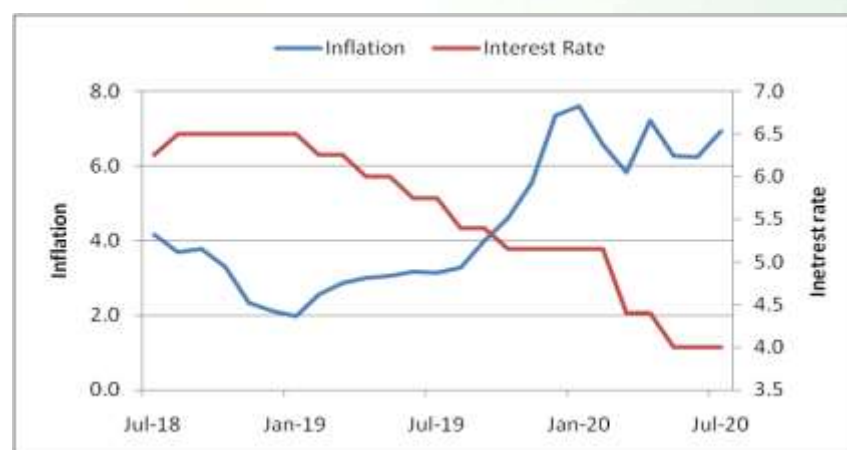
Debt Market

- ❖ RBI's benchmark auction sees record Rs 18,000 crore devolvement on concerns about rising bond yields
- ❖ Bank credit grows 5.52% in fortnight ended August 14: RBI data
- ❖ RBI to sell gold at ₹5,117 per gram in latest issue of sovereign gold bond
- ❖ CRISIL upgrades YES Bank's certificates of deposit to 'A2'
- ❖ Jammu and Kashmir Bank to raise up to Rs 4,500 crore by issuing shares, bonds

10-year G-sec yield



Inflation vs. Interest rate



Debt FPI Inflows

Debt Watch	Percent
Call rate	3.19
Repo rate	4.00
10 YrGsec yield	6.10
1-mth CP rate	3.78
3-mth CP rate	3.37
6-mth CP rate	3.78
1 Yr CP rate	4.09
1-mth CD rate	3.25
3-mth CD rate	3.27
6-mth CD rate	3.53
1 Yr CD rate	3.78

Auctions / Money Market Operation		
Date	Description	Amount(Cr)
Aug-31	G-sec auction	--
Aug-31	Total repo	--
Aug-31	Total reverse repo	6,74,095
Aug-31	Marginal standing facility	300
Aug-31	GOI surplus cash balance with RBI	--

Date	Rs Crore		
	Gross Purchases	Gross Sales	Net Investments
28-Aug-20	433.9	1754.8	(1320.9)
27-Aug-20	1937.1	1520.5	416.7
26-Aug-20	1818.3	2858.2	(1039.9)
Total Jul-2020	26380.0	28856.4	(2476.4)
Total Jun-2020	21934.6	23479.5	(1545.0)
Total 2019	392458.9	366578.5	25880.4

Debt Fund Benchmark Indices

Market Indices	1 M (%)	1 Yr (%)	3 Yr (%)	5 Yr (%)
Crisil Composite Bond Fund Index	-1.08	10.28	8.12	9.03
Crisil Short Term Bond Fund Index	-0.09	9.86	8.19	8.42
Crisil ST Debt Hybrid 75+25 Index	1.15	10.92	8.16	9.05
Crisil Liquid Fund Index	0.35	5.38	6.66	6.90

Macro

- ❖ Good rainfall helps farm sector post record kharif crop acreage despite Covid-19 and floods
- ❖ After public sector banks reforms, govt set to overhaul PSU appointments
- ❖ Income from investments in rental housing for lower income groups to be exempted from income tax
- ❖ Retirement fund body EPFO settles 46 lakh COVID-19-related claims worth Rs 920 crore
- ❖ GDP numbers to be out today, Reuter poll predicts economy to contract by 18.3% in June quarter

	Q3 FY2020(%)	Q2 FY2020(%)	Q3 FY2019(%)
GDP growth	4.7	4.5	6.6

Commodity Prices				
	Current	Week ago	Month ago	Year ago
Brent crude(\$/bbl)	45.05	44.35	43.22	60.49
Gold (RS/10 gms)	50,981	51,840	52,278	38,795

	Jun - 20 (%)	May - 20 (%)	Year ago (%) (Jun - 19)
CPI	6.09%	6.27%	3.18
WPI	-1.81	-3.21	2.02
Core Sector Output	-15.00	-23.40	1.20
IIP	-16.60	-34.70	1.30

Global market trends

- ❖ Japanese PM Shinzo Abe steps down; cites chronic illness as reason
- ❖ Asian Development Bank issues \$3 billion five-year global benchmark bond
- ❖ US economy sees revival, consumer spending rises a moderate 1.9% in July
- ❖ Japan factory output rises in July but retail sales down amid fragile recovery
- ❖ Growth in China's factory activity slows in Aug, floods disrupt production

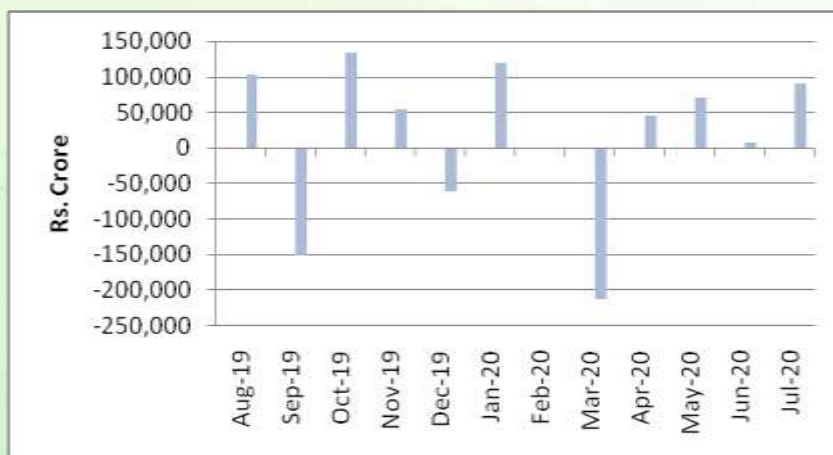
INR vs Global currency		
	Current	Prev close
USD	73.21	73.37
GBP	97.74	97.92
Euro	87.18	87.36
Yen	0.693	0.696
Yuan	10.69	10.70

Global equity benchmark indices returns (%)				
Benchmark	1 Day	1 Week	1 Month	1 Year
FTSE 100	-0.61	-0.64	-2.70	-16.18
Hang Seng	0.56	1.23	2.62	-0.76
Nikkei 225	-1.41	-0.16	0.99	11.73
S&P 500	0.67	3.26	9.00	21.47
Shanghai Composite	1.60	0.68	5.45	17.63

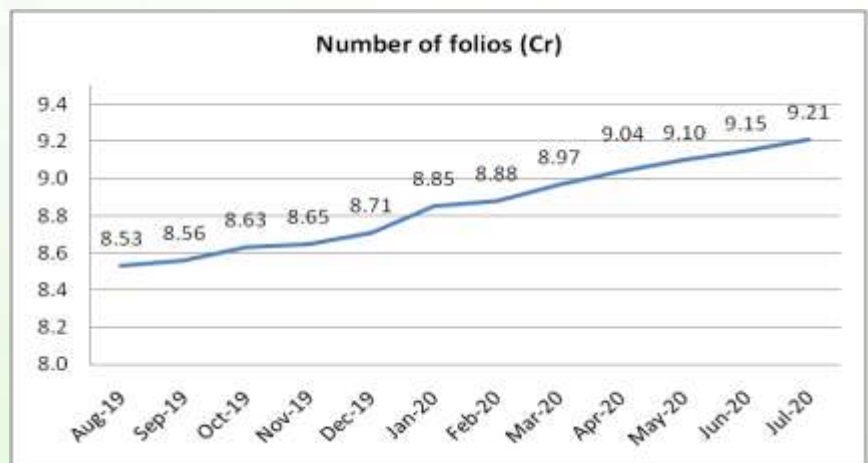
Mutual Fund Roundup

- ❖ MF investment in REITs jumps 3-fold to Rs 735 crore in first half of 2020
- ❖ MF industry instrumental in channelising retail savings into capital mkts in a big way: Amfi
- ❖ Equity MFs witness outflows after 4 years in July at Rs 2,480 crore amid Covid-19 uncertainty
- ❖ Debt funds witness strong inflows of Rs 91,392 crore in July

Mutual fund inflows



Mutual fund folio growth



(Data source: NSE, NSDL, FIMMDA, investing.com, tradingeconomics.com, fx-rate.net, ACEMF, AMFI, RBI, equitymaster.com)

(News source: Economic Times, Business Standard)