

Equity Market

- ❖ Sensex gains for 5th day, up 40 points to 39,113
- ❖ Index VIX declines 2.16% to 18.89
- ❖ Nifty P/E at 32.67, Nifty Midcap 100 P/E at 130.66

S&P CNX Nifty - 200 DMA



Nifty Equity Benchmark Indices

Index	Current Value	% chg	52 wk high	52 wk low
Nifty50	11559.3	0.08	12430.5	7511.1
Nifty Mid cap 100	17270.0	0.12	18495.9	10750.0
Nifty Small cap 100	5877.9	0.53	6401.1	3202.9
Bank	23600.4	0.80	32613.1	16116.3
Auto	8183.0	1.02	8501.2	4452.2
FMCG	31314.5	-0.30	32644.9	22699.1
Pharma	11588.1	0.90	10497.2	6242.9
Realty	232.8	6.40	336.4	160.9

Factors driving the market

- ❖ Real estate stocks jump as Maharashtra govt cuts stamp duty to 2%, Sunteck Realty gains 19%
- ❖ Auto stocks climb for fifth day on hopes of GST rate cuts
- ❖ HAL tanks 14% as govt plans to sell as much as 15 per cent stake in the company

Nifty Top Gainers/Losers

Index	Value	52 wkhigh	52 wklow
Top Gainers			
IndusInd Bank	604.7	1596.6	235.6
M&M	639.0	648.6	245.4
Tata Motors	143.6	201.7	63.5
Top Losers			
Reliance	2108.1	2198.8	867.0
ONGC	80.4	149.7	50.0
Bajaj Auto	3043.1	3315.2	1788.7

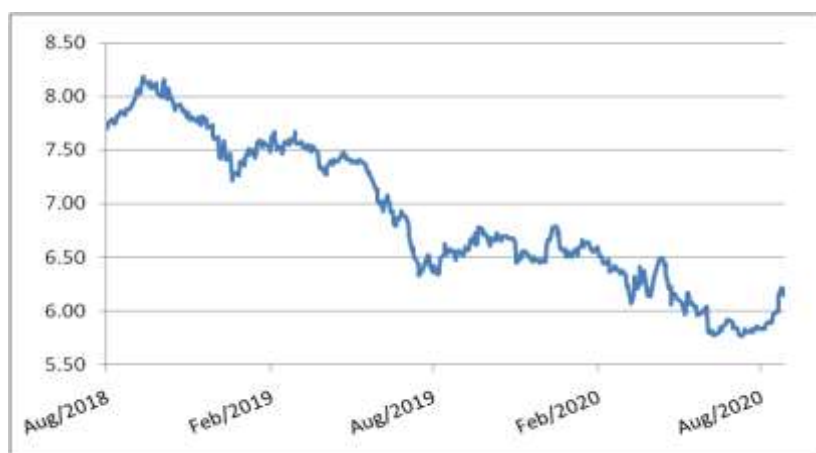
Equity FPI Inflows

Date	Rs Crore		
	Gross Purchases	Gross Sales	Net Investments
27-Aug-20	6834.6	5180.5	1654.1
26-Aug-20	5740.3	3986.6	7153.7
25-Aug-20	5309.3	4247.1	1062.2
Total Jul-2020	119628.6	112065.9	7562.7
Total Jun-2020	170846.4	149014.5	21831.6
Total 2019	1437559.6	1336438.9	101120.8

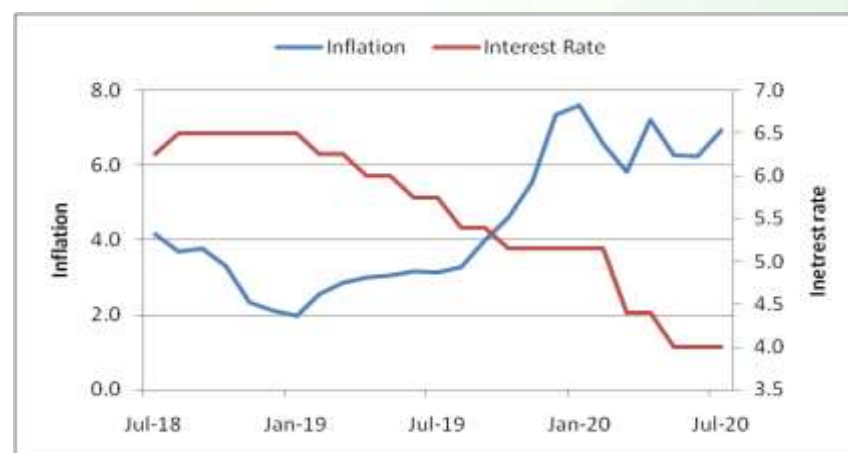
Debt Market

- ❖ Delhi HC stays IBC proceedings against Anil Ambani in Rs 1,200 crore loan default case
- ❖ Mumbai International Airport (MIAL) headed for debt restructuring under RBI's special window
- ❖ Hope not too many will apply for debt restructuring: SBI chairman
- ❖ Moody's downgrades SBI's baseline credit assessment to ba2; sees asset quality, profit deteriorating
- ❖ CARE revises Vodafone Idea's credit rating to BB- from B+ on account of AGR case

10-year G-sec yield



Inflation vs. Interest rate



Debt FPI Inflows

Debt Watch	Percent
Call rate	3.03
Repo rate	4.00
10 Yr Gsec yield	6.15
1-mth CP rate	3.47
3-mth CP rate	3.40
6-mth CP rate	3.78
1 Yr CP rate	4.09
1-mth CD rate	3.25
3-mth CD rate	3.55
6-mth CD rate	3.53
1 Yr CD rate	3.78

Auctions / Money Market Operation		
Date	Description	Amount(Cr)
Aug-28	G-sec auction	--
Aug-28	Total repo	--
Aug-28	Total reverse repo	6,44,363
Aug-28	Marginal standing facility	--
Aug-28	GOI surplus cash balance with RBI	--

Date	Rs Crore		
	Gross Purchases	Gross Sales	Net Investments
27-Aug-20	1937.1	1520.5	416.7
26-Aug-20	1818.3	2858.2	(1039.9)
25-Aug-20	1600.1	1469.8	130.3
Total Jul-2020	26380.0	28856.4	(2476.4)
Total Jun-2020	21934.6	23479.5	(1545.0)
Total 2019	392458.9	366578.5	25880.4

Debt Fund Benchmark Indices

Market Indices	1 M (%)	1 Yr (%)	3 Yr (%)	5 Yr (%)
Crisil Composite Bond Fund Index	-1.09	10.23	8.13	9.05
Crisil Short Term Bond Fund Index	-0.13	9.93	8.20	8.43
Crisil ST Debt Hybrid 75+25 Index	1.29	10.61	8.17	9.04
Crisil Liquid Fund Index	0.34	5.38	6.66	6.91

Macro

- ❖ Centre suggests state governments to borrow Rs 2.35 lakh crore to meet tax shortfall
- ❖ India-ASEAN can resolve differences, take trade to \$300 billion: Piyush Goyal
- ❖ G-20 goods trade decline in second quarter steepest since 2009 crisis: OECD
- ❖ Govt asks PSBs to look at initiating insolvency proceedings against personal guarantors
- ❖ Infrastructure-focused fiscal stimulus is key to India's recovery: EY Report

	Q3 FY2020(%)	Q2 FY2020(%)	Q3 FY2019(%)
GDP growth	4.7	4.5	6.6

Commodity Prices				
	Current	Week ago	Month ago	Year ago
Brent crude(\$/bbl)	45.73	45.37	43.41	58.70
Gold (RS/10 gms)	51,234	52,317	52,260	38,404

	Jun - 20 (%)	May - 20 (%)	Year ago (%) (Jun - 19)
CPI	6.09%	6.27%	3.18
WPI	-1.81	-3.21	2.02
Core Sector Output	-15.00	-23.40	1.20
IIP	-16.60	-34.70	1.30

Global market trends

- ❖ New Zealand's stock exchange halts trading for third day in a row following cyber attacks
- ❖ Jerome Powell targets 2% average inflation, focus shifts to jobs
- ❖ Ultra-rich US investors hoard cash as economy fears over Covid-19 grow
- ❖ Donald Trump promises tariffs on companies that leave U.S. to create jobs overseas
- ❖ Walmart teams up with Microsoft on potential bid for video app TikTok

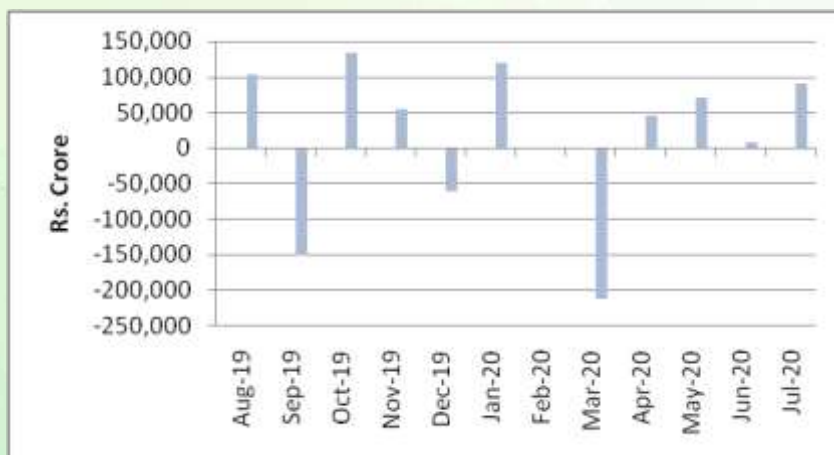
INR vs Global currency		
	Current	Prev close
USD	73.60	73.77
GBP	97.51	97.55
Euro	87.32	87.29
Yen	0.690	0.691
Yuan	10.70	10.72

Global equity benchmark indices returns (%)				
Benchmark	1 Day	1 Week	1 Month	1 Year
FTSE 100	-0.75	-0.22	-1.72	-15.37
Hang Seng	-0.83	1.98	2.76	-1.49
Nikkei 225	-0.35	1.43	2.17	13.46
S&P 500	0.17	2.93	7.57	21.45
Shanghai Composite	0.61	-0.41	4.52	15.43

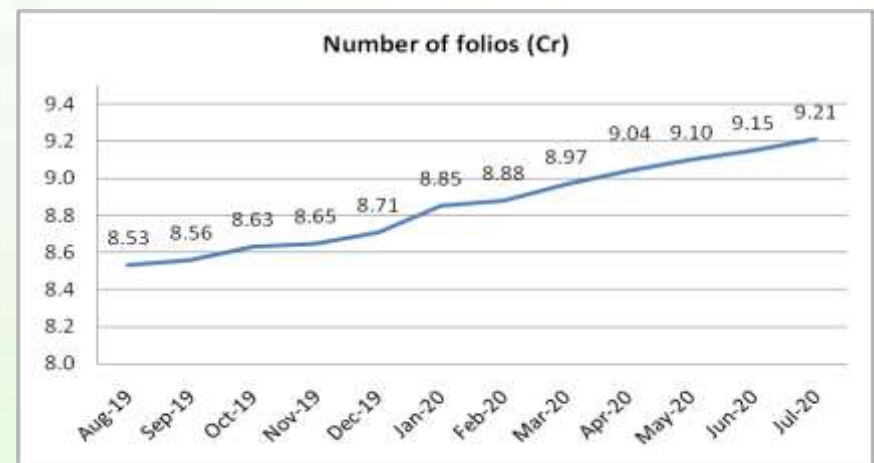
Mutual Fund Roundup

- ❖ MF industry instrumental in channelising retail savings into capital mkts in a big way: Amfi
- ❖ Equity MFs witness outflows after 4 years in July at Rs 2,480 crore amid Covid-19 uncertainty
- ❖ Debt funds witness strong inflows of Rs 91,392 crore
- ❖ Hybrid schemes witness outflows of Rs 7,301 crore

Mutual fund inflows



Mutual fund folio growth



(Data source: NSE, NSDL, FIMMDA, investing.com, tradingeconomics.com, fx-rate.net, ACEMF, AMFI, RBI, equitymaster.com)

(Newsource: Economic Times, Business Standard)