

## Equity Market

- ❖ Sensex pares gains to end 45 points up at 38,844
- ❖ Index VIX rises 2.04% to 19.32
- ❖ Nifty P/E at 32.43, Nifty Midcap 100 P/E at 130.66

### S&P CNX Nifty - 200 DMA



### Nifty Equity Benchmark Indices

Index	Current Value	% chg	52 wk high	52 wk low
Nifty50	11472.3	0.05	12430.5	7511.1
Nifty Mid cap 100	17159.7	0.34	18495.9	10750.0
Nifty Small cap 100	5785.4	0.54	6401.1	3202.9
Bank	23092.2	1.13	32613.1	16116.3
Auto	7983.6	0.44	8501.2	4452.2
FMCG	31460.3	-0.57	32644.9	22699.1
Pharma	11500.0	-0.62	10497.2	6242.9
Realty	217.1	-2.14	336.4	160.9

## Factors driving the market

- ❖ Tata Motors biggest winner as the carmaker looks to shed its debt of Rs 48,000 crore in 3 years
- ❖ SBI witnessed rapid buying after Goldman Sachs upgraded the stock to 'buy'
- ❖ GAIL slips as Fitch Ratings said its weaker EBIT highlights US LNG price risks

### Nifty Top Gainers/Losers

Index	Value	52 wkhigh	52 wklow
<b>Top Gainers</b>			
Tata Motors	127.7	201.7	63.5
Bajaj Finance	3658.0	4923.4	1783.0
SBI	208.3	351.0	149.5
<b>Top Losers</b>			
GAIL	99.9	148.8	65.0
NTPC	103.8	129.7	73.2
Sun Pharma	526.0	550.8	312.0

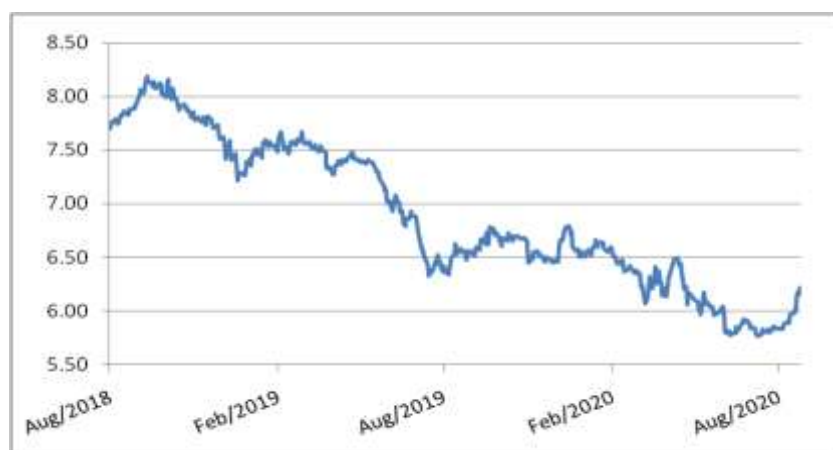
### Equity FPI Inflows

Date	Rs Crore		
	Gross Purchases	Gross Sales	Net Investments
25-Aug-20	5309.3	4247.1	1062.2
24-Aug-20	3915.6	3477.8	437.8
21-Aug-20	4819.7	4981.0	(161.3)
Total Jul-2020	119628.6	112065.9	7562.7
Total Jun-2020	170846.4	149014.5	21831.6
Total 2019	1437559.6	1336438.9	101120.8

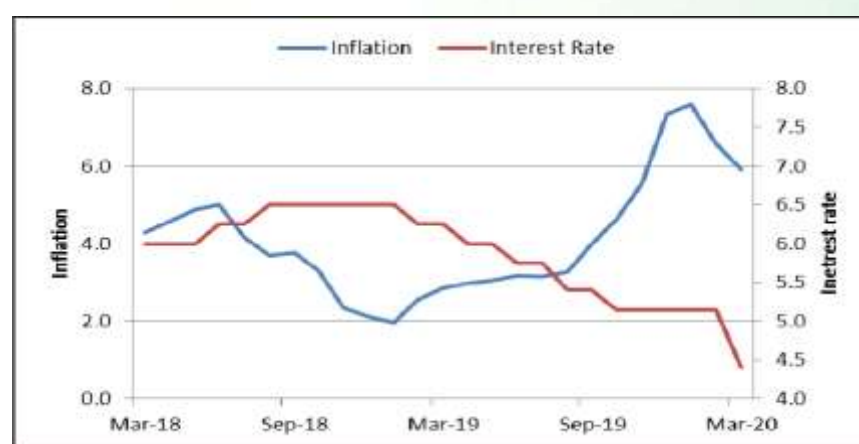
## Debt Market

- ❖ RBI announces OMO worth Rs 20,000 crore in 2 tranches to cool G-sec yields
- ❖ Non-performing assets can widen up to 2%: HDFC Bank
- ❖ Banks see meaningful credit growth recovery only after 18 months
- ❖ Moody's downgrades SBI's baseline credit assessment to ba2; sees asset quality, profit deteriorating
- ❖ CARE revises Vodafone Idea's credit rating to BB- from B+ on account of AGR case

## 10-year G-sec yield



## Inflation vs. Interest rate



## Debt FPI Inflows

Debt Watch	Percent
Call rate	3.10
Repo rate	4.00
10 Yr Gsec yield	6.16
1-mth CP rate	3.75
3-mth CP rate	3.70
6-mth CP rate	3.80
1 Yr CP rate	4.09
1-mth CD rate	3.25
3-mth CD rate	3.57
6-mth CD rate	3.53
1 Yr CD rate	3.78

Auctions / Money Market Operation		
Date	Description	Amount(Cr)
Aug-26	G-sec auction	--
Aug-26	Total repo	--
Aug-26	Total reverse repo	6,34,837
Aug-26	Marginal standing facility	1
Aug-26	GOI surplus cash balance with RBI	--

Date	Rs Crore		
	Gross Purchases	Gross Sales	Net Investments
25-Aug-20	1600.1	1469.8	130.3
24-Aug-20	1446.0	477.8	968.2
21-Aug-20	617.8	1731.4	(1113.6)
Total Jul-2020	26380.0	28856.4	(2476.4)
Total Jun-2020	21934.6	23479.5	(1545.0)
Total 2019	392458.9	366578.5	25880.4

## Debt Fund Benchmark Indices

Market Indices	1 M (%)	1 Yr (%)	3 Yr (%)	5 Yr (%)
Crisil Composite Bond Fund Index	-1.08	10.60	8.17	9.12
Crisil Short Term Bond Fund Index	-0.05	10.16	8.25	8.48
Crisil ST Debt Hybrid 75+25 Index	0.98	11.27	8.14	9.10
Crisil Liquid Fund Index	0.34	5.39	6.66	6.91

## Macro

- ❖ Govt amends CSR norms; likely to help boost funding for vaccines, drugs
- ❖ Govt plans to bring social security schemes under one umbrella
- ❖ RBI expects inflation to firm up further in coming months
- ❖ RBI prescribes reforms list for post-COVID recovery such as plan to rein fiscal deficit, targeted sops, asset sale
- ❖ India to post strong enough growth pick up in second half of 2020: Moody's

	Q3 FY2020(%)	Q2 FY2020(%)	Q3 FY2019(%)
GDP growth	4.7	4.5	6.6

Commodity Prices				
	Current	Week ago	Month ago	Year ago
Brent crude(\$/bbl)	45.86	45.46	43.34	58.49
Gold (RS/10 gms)	51,044	53,752	50,960	38,578

	Jun - 20 (%)	May - 20 (%)	Year ago (%) (Jun - 19)
CPI	6.09%	*9.28%	3.18
WPI	-1.81	-3.21	2.02
Core Sector Output	-15.00	-23.40	1.20
IIP	-16.60	-34.70	1.30

## Global market trends

- ❖ German economy shrinks by record 9.7% in second quarter
- ❖ Brent rises on US output cuts ahead of biggest storm threat in 15 years
- ❖ US, China reaffirm commitment to Phase 1 trade deal in phone call
- ❖ Asian shares slip from two-year high as economic strains pile up
- ❖ US consumer confidence fades further in August

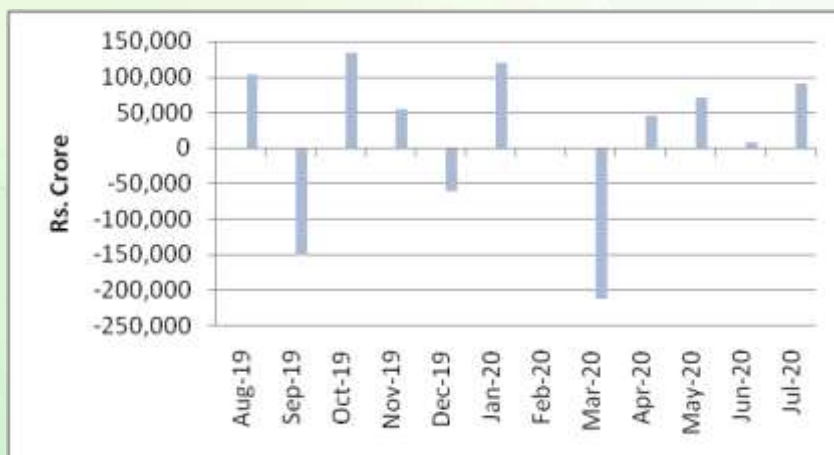
INR vs Global currency		
	Current	Prev close
USD	74.27	74.23
GBP	97.58	97.56
Euro	87.75	87.77
Yen	0.698	0.697
Yuan	10.76	10.75

Global equity benchmark indices returns (%)				
Benchmark	1 Day	1 Week	1 Month	1 Year
FTSE 100	-1.11	-0.65	-1.42	-14.91
Hang Seng	-0.26	0.47	3.16	-2.65
Nikkei 225	1.35	1.07	2.40	12.49
S&P 500	0.36	1.59	7.09	20.95
Shanghai Composite	-0.36	-2.25	5.53	16.43

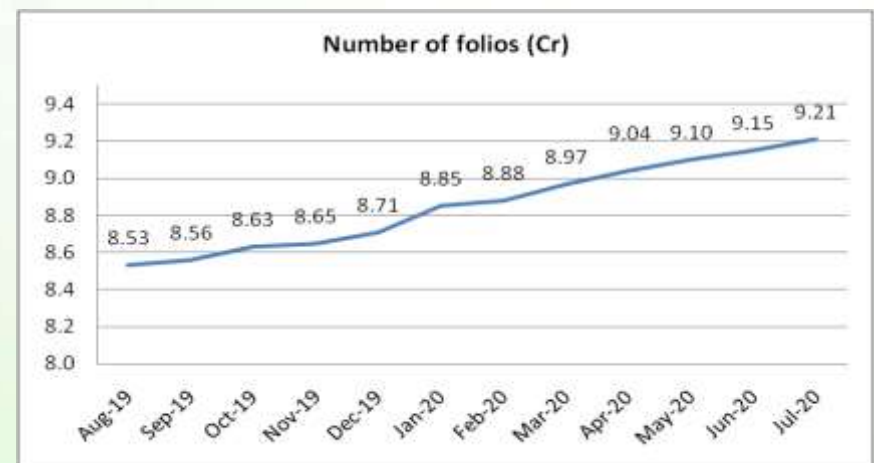
## Mutual Fund Roundup

- ❖ MF industry instrumental in channelising retail savings into capital mkts in a big way: Amfi
- ❖ Equity MFs witness outflows after 4 years in July at Rs 2,480 crore amid Covid-19 uncertainty
- ❖ Debt funds witness strong inflows of Rs 91,392 crore
- ❖ Hybrid schemes witness outflows of Rs 7,301 crore

### Mutual fund inflows



### Mutual fund folio growth



(Data source: NSE, NSDL, FIMMDA, investing.com, tradingeconomics.com, fx-rate.net, ACEMF, AMFI, RBI, equitymaster.com)

(Newsource: Economic Times, Business Standard) (\*CPI Food price index)