

## Equity Market

- ❖ Sensex slips 394 points to settle at 38,220
- ❖ Index VIX rises 4.24% to 20.62
- ❖ Nifty P/E at 31.91, Nifty Midcap 100 P/E at 130.66

### S&P CNX Nifty - 200 DMA



### Nifty Equity Benchmark Indices

Index	Current Value	% chg	52 wk high	52 wk low
Nifty50	11312.2	-0.84	12430.5	7511.1
Nifty Mid cap 100	16900.0	0.81	18495.9	10750.0
Nifty Small cap 100	5601.9	0.66	6401.1	3202.9
Bank	21999.5	-1.29	32613.1	16116.3
Auto	7911.6	-0.37	8501.2	4452.2
FMCG	31439.9	-0.46	32644.9	22699.1
Pharma	11540.9	0.03	10497.2	6242.9
Realty	221.3	0.43	336.4	160.9

## Factors driving the market

- ❖ Market came under pressure amid weak global cues following US Fed's July meeting minutes
- ❖ Power stocks zoom as Cabinet ups lending limits for discoms
- ❖ Midcap and small cap indices rally for the fourth day

### Nifty Top Gainers/Losers

Index	Value	52 wkhigh	52 wklow
<b>Top Gainers</b>			
NTPC	101.2	129.7	73.2
ONGC	82.2	149.7	50.0
Power Grid	182.0	211.3	122.2
<b>Top Losers</b>			
Tata Motors	121.9	201.7	63.5
HDFC	1786.2	2499.9	1473.5
Axis Bank	434.6	765.9	286.0

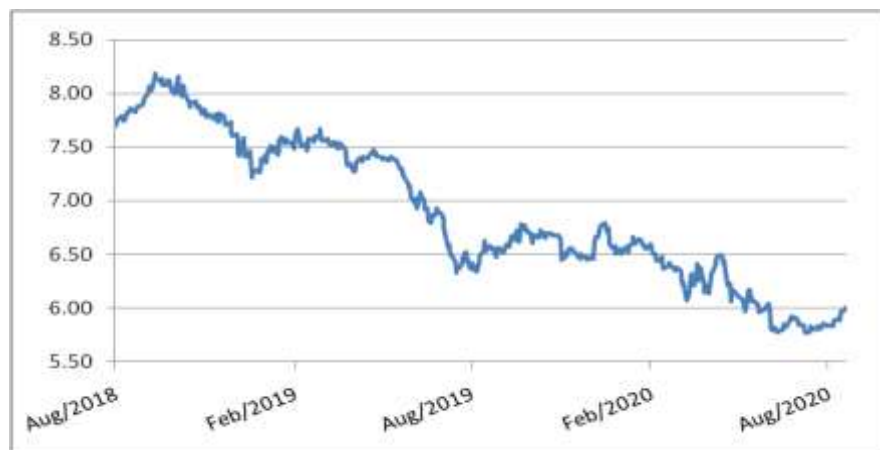
### Equity FPI Inflows

Date	Rs Crore		
	Gross Purchases	Gross Sales	Net Investments
20-Aug-20	5545.9	4447.1	1098.8
19-Aug-20	5396.0	4344.8	1051.3
18-Aug-20	15788.5	3474.4	12314.1
Total Jul-2020	119628.6	112065.9	7562.7
Total Jun-2020	170846.4	149014.5	21831.6
Total 2019	1437559.6	1336438.9	101120.8

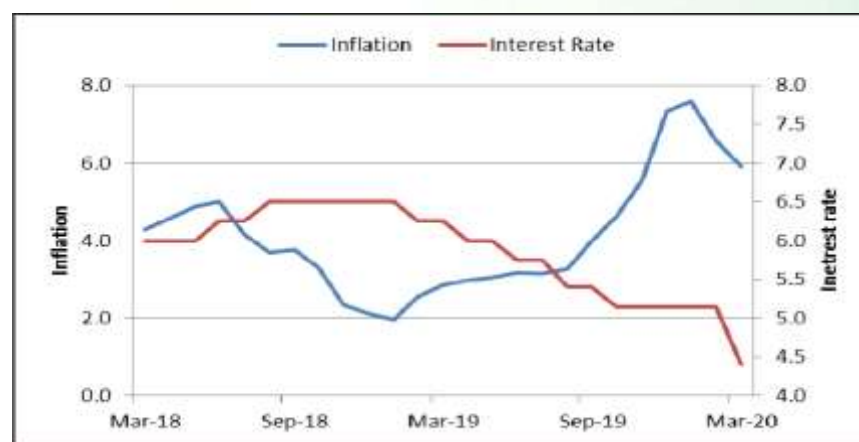
## Debt Market

- ❖ L&T Finance Holdings to raise Rs 200 crore through NCDs on private placement basis
- ❖ Future Enterprises defaults on bond interest payment due on August 17
- ❖ Crisil downgraded Indian Bank's Tier I & II bonds
- ❖ 10-year bond yields climb back to 6% as RBI goes silent regarding support for the bond
- ❖ Banks may recast loans worth Rs 8.4 lakh crore: India Ratings

## 10-year G-sec yield



## Inflation vs. Interest rate



## Debt FPI Inflows

Debt Watch	Percent
Call rate	2.97
Repo rate	4.00
10 Yr Gsec yield	6.00
1-mth CP rate	3.48
3-mth CP rate	3.35
6-mth CP rate	3.85
1 Yr CP rate	4.09
1-mth CD rate	3.17
3-mth CD rate	3.32
6-mth CD rate	3.46
1 Yr CD rate	3.78

Auctions / Money Market Operation		
Date	Description	Amount(Cr)
Aug-21	G-sec auction	--
Aug-21	Total repo	--
Aug-21	Total reverse repo	6,48,114
Aug-21	Marginal standing facility	--
Aug-21	GOI surplus cash balance with RBI	--

Date	Rs Crore		
	Gross Purchases	Gross Sales	Net Investments
20-Aug-20	1363.1	643.4	719.7
19-Aug-20	658.8	827.2	(168.4)
18-Aug-20	772.1	1062.8	(290.7)
Total Jul-2020	26380.0	28856.4	(2476.4)
Total Jun-2020	21934.6	23479.5	(1545.0)
Total 2019	392458.9	366578.5	25880.4

## Debt Fund Benchmark Indices

Market Indices	1 M (%)	1 Yr (%)	3 Yr (%)	5 Yr (%)
Crisil Composite Bond Fund Index	-0.29	11.88	8.44	9.25
Crisil Short Term Bond Fund Index	0.16	10.63	8.35	8.52
Crisil ST Debt Hybrid 75+25 Index	1.09	10.76	8.10	8.72
Crisil Liquid Fund Index	0.35	5.43	6.68	6.92

## Macro

- ❖ Centre eases norms to offer 50% of pay for three months as unemployment allowance to ESIC members
- ❖ Over Rs 1 lakh crore worth of loans disbursed under ECLGS until August 18
- ❖ Niti Aayog panel recommends linking sugarcane prices to sugar rates
- ❖ 1,560 listed companies record 2.9% hike in wages in June quarter, lowest in 18 years
- ❖ Retail inflation for farm, rural workers drops in July on lower prices of certain food items

	Q3 FY2020(%)	Q2 FY2020(%)	Q3 FY2019(%)
GDP growth	4.7	4.5	6.6

Commodity Prices				
	Current	Week ago	Month ago	Year ago
Brent crude(\$/bbl)	44.90	44.96	43.28	60.03
Gold (RS/10 gms)	53,185	52,441	49,118	37,688

	Jun - 20 (%)	May - 20 (%)	Year ago (%) (Jun - 19)
CPI	6.09%	*9.28%	3.18
WPI	-1.81	-3.21	2.02
Core Sector Output	-15.00	-23.40	1.20
IIP	-16.60	-34.70	1.30

## Global market trends

- ❖ US Fed officials expect that coronavirus will 'weigh heavily' on the economy
- ❖ US, China differ over plans for Phase 1 trade talks, no meeting scheduled
- ❖ Japan's core consumer prices mired as deflation spectre looms
- ❖ WTO goods trade index hits record low, detects some recovery signs
- ❖ US jobless claims jump back above 1 million as Covid-19 pulls down economy

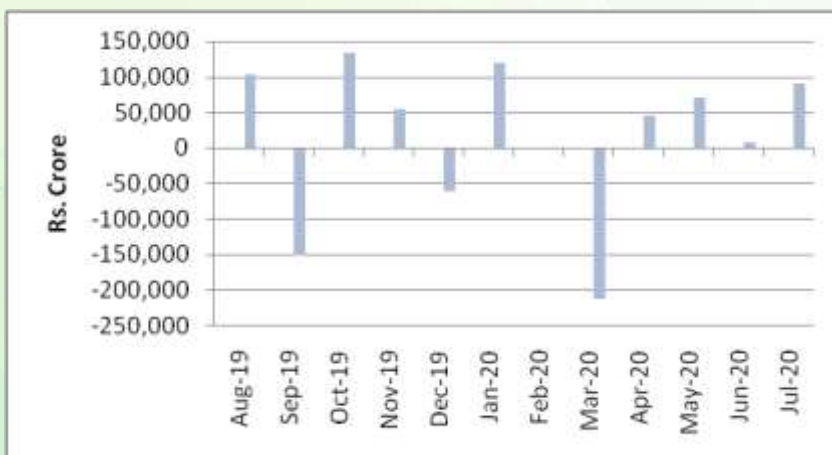
INR vs Global currency		
	Current	Prev close
USD	74.92	74.93
GBP	99.19	99.11
Euro	88.97	88.90
Yen	0.709	0.709
Yuan	10.84	10.85

Global equity benchmark indices returns (%)				
Benchmark	1 Day	1 Week	1 Month	1 Year
FTSE 100	-1.61	-2.79	-3.96	-15.60
Hang Seng	-1.54	-1.74	-1.06	-5.49
Nikkei 225	-1.00	-1.59	0.72	10.66
S&P 500	0.32	0.36	4.11	16.72
Shanghai Composite	-1.30	1.30	1.50	16.80

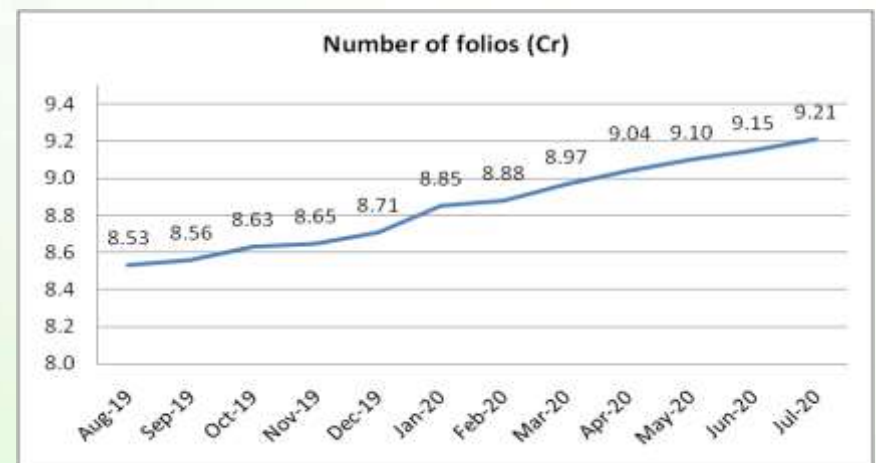
## Mutual Fund Roundup

- ❖ Mutual fund inflows in July at Rs 89,813 crore
- ❖ Equity MFs witness outflows after 4 years in July at Rs 2,480 crore amid Covid-19 uncertainty
- ❖ Debt funds witness strong inflows of Rs 91,392 crore
- ❖ Hybrid schemes witness outflows of Rs 7,301 crore

### Mutual fund inflows



### Mutual fund folio growth



(Data source: NSE, NSDL, FIMMDA, investing.com, tradingeconomics.com, fx-rate.net, ACEMF, AMFI, RBI, equitymaster.com)

(Newsource: Economic Times, Business Standard) (\*CPI Food price index)