

## Equity Market

- ❖ Sensex gains 173 points to close at 38,051
- ❖ Index VIX declines 2.46% to 21.14
- ❖ Nifty P/E at 31.64, Nifty Midcap 100 P/E at 130.66

### S&P CNX Nifty - 200 DMA



### Nifty Equity Benchmark Indices

Index	Current Value	% chg	52 wk high	52 wk low
Nifty50	11259.4	0.73	12430.5	7511.1
Nifty Mid cap 100	16466.9	0.51	18495.9	10750.0
Nifty Small cap 100	5417.1	0.89	6401.1	3202.9
Bank	21754.0	0.31	32613.1	16116.3
Auto	7864.0	2.43	8501.2	4452.2
FMCG	31582.8	1.10	32644.9	22699.1
Pharma	11602.0	-0.33	10497.2	6242.9
Realty	208.8	0.82	336.4	160.9

## Factors driving the market

- ❖ L&T, NCC gain; Ashoka Buildcon surges 11% on govt's infra push
- ❖ NTPC ended nearly 8% higher after the company's profit before exceptional item and tax rose 16.10%
- ❖ Aarti Drugs shares surge 13% on bonus issue plan announcement

### Nifty Top Gainers/Losers

Index	Value	52 wkhigh	52 wklow
<b>Top Gainers</b>			
NTPC	95.0	129.7	73.2
Eicher Motors	21110.0	23450.0	12450.1
ZEEL	168.8	376.0	114.0
<b>Top Losers</b>			
SBI	193.5	351.0	149.5
Bharti Airtel	520.9	612.0	325.5
BPCL	408.0	549.0	252.0

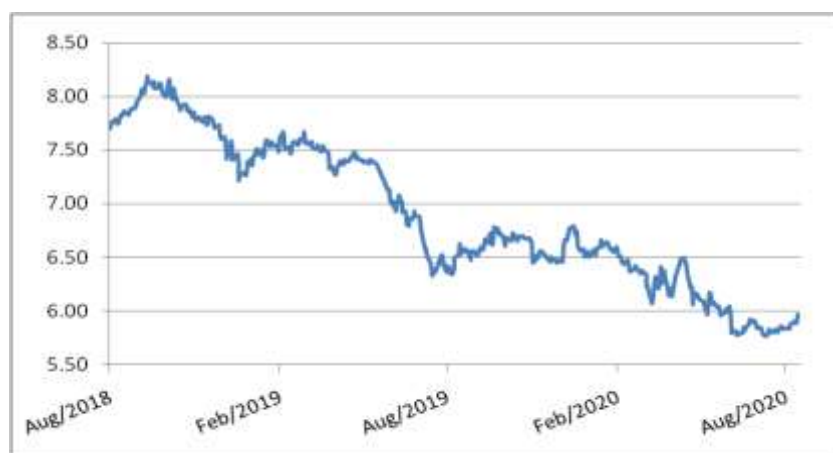
### Equity FPI Inflows

Date	Rs Crore		
	Gross Purchases	Gross Sales	Net Investments
17-Aug-20	4773.7	4961.5	(187.7)
14-Aug-20	4552.5	4055.6	496.9
13-Aug-20	8032.4	4573.9	3458.6
Total Jul-2020	119628.6	112065.9	7562.7
Total Jun-2020	170846.4	149014.5	21831.6
Total 2019	1437559.6	1336438.9	101120.8

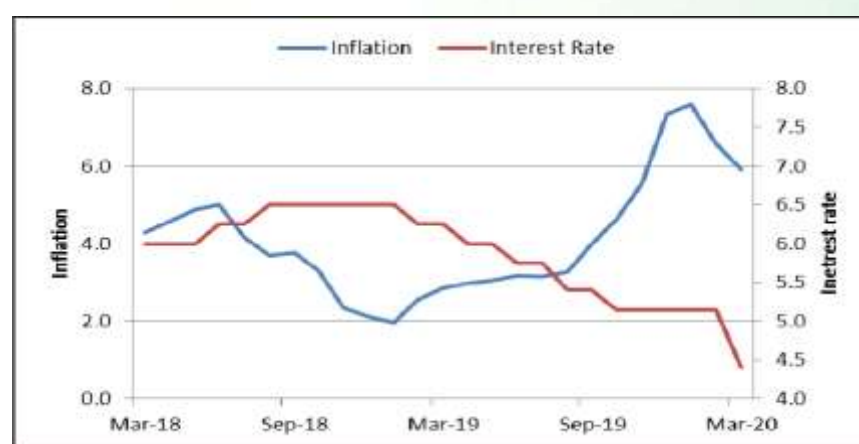
## Debt Market

- ❖ Global funds ditch Indian bonds on worries over Budget deficit, virus deaths
- ❖ Embassy Office Parks REIT gets board approval for raising Rs 2,000 crore via NCDs
- ❖ Credit guarantee scheme for NBFC papers extended by three months
- ❖ 60% of loans under moratorium could seek restructuring under RBI's special window: Jefferies
- ❖ Vedanta raises nearly \$1.4 billion in overseas bonds

## 10-year G-sec yield



## Inflation vs. Interest rate



## Debt FPI Inflows

Debt Watch	Percent
Call rate	3.17
Repo rate	4.00
10 Yr Gsec yield	5.98
1-mth CP rate	3.48
3-mth CP rate	3.39
6-mth CP rate	3.85
1 Yr CP rate	4.09
1-mth CD rate	3.20
3-mth CD rate	3.35
6-mth CD rate	3.46
1 Yr CD rate	3.78

Auctions / Money Market Operation		
Date	Description	Amount(Cr)
Aug-18	G-sec auction	--
Aug-18	Total repo	--
Aug-18	Total reverse repo	5,97,878
Aug-18	Marginal standing facility	--
Aug-18	GOI surplus cash balance with RBI	--

Date	Rs Crore		
	Gross Purchases	Gross Sales	Net Investments
17-Aug-20	226.9	849.2	(622.3)
14-Aug-20	888.1	297.4	590.7
13-Aug-20	467.5	1157.6	(690.1)
Total Jul-2020	26380.0	28856.4	(2476.4)
Total Jun-2020	21934.6	23479.5	(1545.0)
Total 2019	392458.9	366578.5	25880.4

## Debt Fund Benchmark Indices

Market Indices	1 M (%)	1 Yr (%)	3 Yr (%)	5 Yr (%)
Crisil Composite Bond Fund Index	-0.13	11.97	8.52	9.29
Crisil Short Term Bond Fund Index	0.14	10.66	8.34	8.52
Crisil ST Debt Hybrid 75+25 Index	1.10	10.46	7.96	8.61
Crisil Liquid Fund Index	0.34	5.44	6.68	6.93

## Macro

- ❖ Govt proposes Data Ombudsman, higher penalty for refusal to submit data for key economic stats
- ❖ FM Nirmala Sitharaman seeks investment from UAE for Rs 111 lakh cr National Infrastructure Pipeline
- ❖ Consumer sentiment improving, revival stronger among lower-income segments, small cities: Report
- ❖ Pace of economic recovery appears to be gathering momentum in August: Nomura
- ❖ India's GDP to contract 16.5% in Apr-June quarter: SBI report

	Q3 FY2020(%)	Q2 FY2020(%)	Q3 FY2019(%)
GDP growth	4.7	4.5	6.6

Commodity Prices				
	Current	Week ago	Month ago	Year ago
Brent crude(\$/bbl)	45.37	44.99	43.14	59.12
Gold (RS/10 gms)	52,690	55,331	48,942	37,469

	Jun - 20 (%)	May - 20 (%)	Year ago (%) (Jun - 19)
CPI	6.09%	*9.28%	3.18
WPI	-1.81	-3.21	2.02
Core Sector Output	-15.00	-23.40	1.20
IIP	-16.60	-34.70	1.30

## Global market trends

- ❖ Singapore announces \$5.8 billion to boost coronavirus hit economy
- ❖ Will give tax incentives to companies bringing jobs to US from China: Trump
- ❖ China injects \$101 billion to ease liquidity, holds interest rate
- ❖ Japan economy shrinks 27.8% In April-June as Covid-19 slams consumption
- ❖ Thailand suffers biggest economic fall since 1998, more stimulus announced

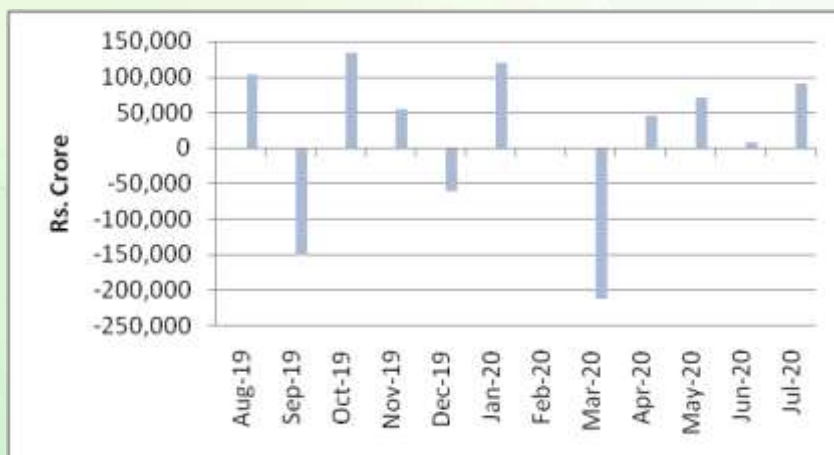
INR vs Global currency		
	Current	Prev close
USD	74.80	74.73
GBP	97.26	98.12
Euro	88.97	88.86
Yen	0.708	0.707
Yuan	10.79	10.78

Global equity benchmark indices returns (%)				
Benchmark	1 Day	1 Week	1 Month	1 Year
FTSE 100	0.61	1.27	-2.59	-13.91
Hang Seng	0.65	3.98	1.03	-1.50
Nikkei 225	-0.83	3.43	1.76	13.11
S&P 500	0.27	0.64	4.88	17.08
Shanghai Composite	2.34	1.76	6.99	21.78

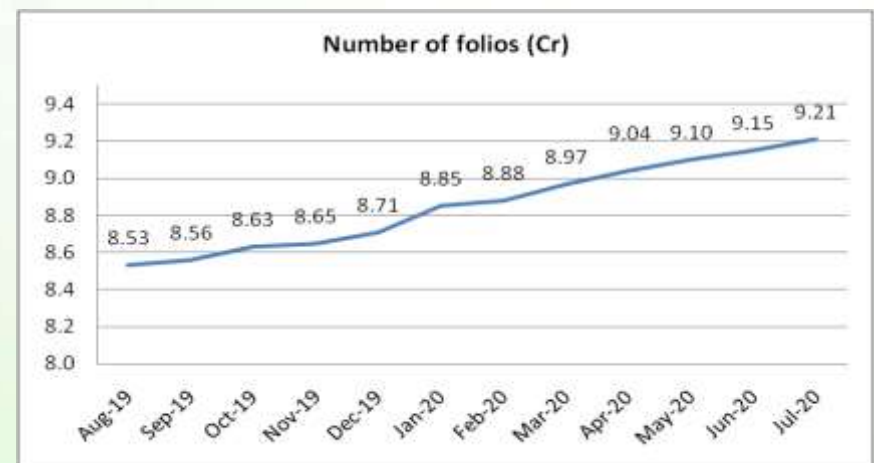
## Mutual Fund Roundup

- ❖ Mutual fund inflows in July at Rs 89,813 crore
- ❖ Equity MFs witness outflows after 4 years in July at Rs 2,480 crore amid Covid-19 uncertainty
- ❖ Debt funds witness strong inflows of Rs 91,392 crore
- ❖ Hybrid schemes witness outflows of Rs 7,301 crore

### Mutual fund inflows



### Mutual fund folio growth



(Data source: NSE, NSDL, FIMMDA, investing.com, tradingeconomics.com, fx-rate.net, ACEMF, AMFI, RBI, equitymaster.com)

(Newsource: Economic Times, Business Standard) (\*CPI Food price index)