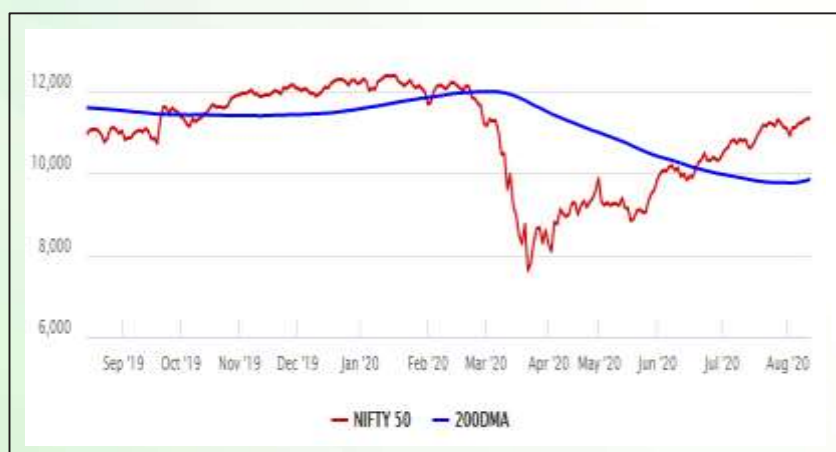


Equity Market

- ❖ Sensex down 37 points to 38,370
- ❖ Index VIX declines 2.20% to 20.85
- ❖ Nifty P/E at 31.33, Nifty Midcap 100 P/E at 130.66

S&P CNX Nifty - 200 DMA



Nifty Equity Benchmark Indices

Index	Current Value	% chg	52 wk high	52 wk low
Nifty50	11308.4	-0.12	12430.5	7511.1
Nifty Mid cap 100	16268.9	0.07	18495.9	10750.0
Nifty Small cap 100	5393.0	0.41	6401.1	3202.9
Bank	22264.0	0.17	32613.1	16116.3
Auto	7785.1	2.03	8501.2	4452.2
FMCG	31636.7	-0.41	32644.9	22699.1
Pharma	11590.3	-1.55	10497.2	6242.9
Realty	207.1	-0.74	336.4	160.9

Factors driving the market

- ❖ Weak global cues weighed on investor sentiments
- ❖ Pharma index drags on profit booking, Cipla, Sun Pharma top losers
- ❖ PSBs gain on reports that govt may extend 'Ratna' title to lenders like SBI and Bank of Baroda

Nifty Top Gainers/Losers

Index	Value	52 wkhigh	52 wklow
Top Gainers			
HCL Tech	715.7	719.0	375.3
SBI	203.5	351.0	149.5
Tech Mahindra	694.0	845.9	471.4
Top Losers			
Kotak Bank	1336.6	1740.0	1001.0
Cipla	762.0	814.5	355.3
Sun Pharma	530.0	550.8	312.0

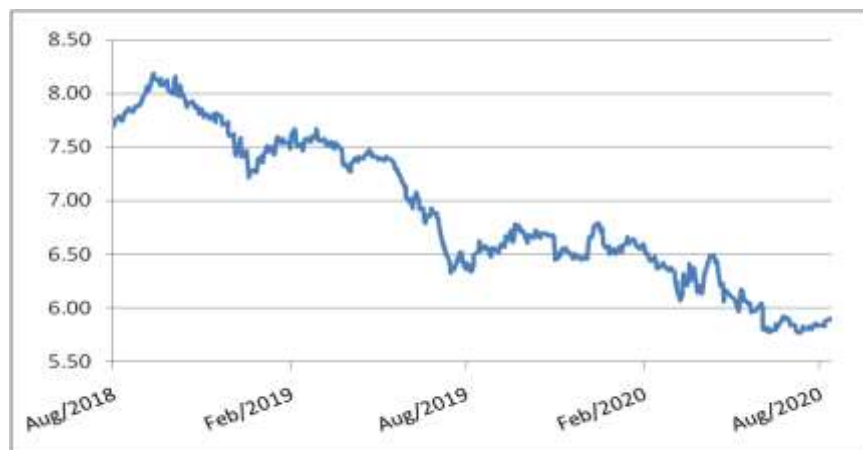
Equity FPI Inflows

Date	Rs Crore		
	Gross Purchases	Gross Sales	Net Investments
12-Aug-20	16974.4	5203.2	11771.2
11-Aug-20	5867.7	4595.4	1272.3
10-Aug-20	6499.4	5193.0	1306.5
Total Jul-2020	119628.6	112065.9	7562.7
Total Jun-2020	170846.4	149014.5	21831.6
Total 2019	1437559.6	1336438.9	101120.8

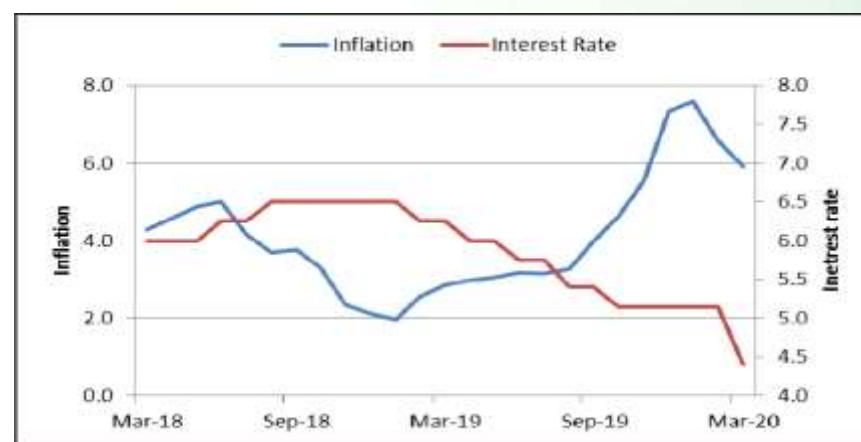
Debt Market

- ❖ India Inc's foreign loans fall 35% on Future Retail default, shaky economy
- ❖ Banks told to be ready with lists for loan recast
- ❖ ICRA revises Tube investments long term rating to AA+ on watch with developing implications
- ❖ NBFC bond sales in India rebounds to pre-crisis levels
- ❖ Debt revamp proposal to prolong Indian banks' asset quality uncertainty: Fitch

10-year G-sec yield



Inflation vs. Interest rate



Debt FPI Inflows

Debt Watch	Percent
Call rate	3.16
Repo rate	4.00
10 Yr Gsec yield	5.88
1-mth CP rate	3.40
3-mth CP rate	3.45
6-mth CP rate	3.85
1 Yr CP rate	4.03
1-mth CD rate	3.53
3-mth CD rate	3.38
6-mth CD rate	3.56
1 Yr CD rate	3.78

Auctions / Money Market Operation		
Date	Description	Amount(Cr)
Aug-13	G-sec auction	--
Aug-13	Total repo	--
Aug-13	Total reverse repo	6,04,875
Aug-13	Marginal standing facility	--
Aug-13	GOI surplus cash balance with RBI	--

Date	Rs Crore		
	Gross Purchases	Gross Sales	Net Investments
12-Aug-20	941.4	295.8	645.6
11-Aug-20	142.5	439.3	(296.8)
10-Aug-20	2061.0	1167.8	893.2
Total Jul-2020	26380.0	28856.4	(2476.4)
Total Jun-2020	21934.6	23479.5	(1545.0)
Total 2019	392458.9	366578.5	25880.4

Debt Fund Benchmark Indices

Market Indices	1 M (%)	1 Yr (%)	3 Yr (%)	5 Yr (%)
Crisil Composite Bond Fund Index	-0.01	11.81	8.54	9.37
Crisil Short Term Bond Fund Index	0.21	10.61	8.36	8.55
Crisil ST Debt Hybrid 75+25 Index	1.53	10.33	8.21	8.74
Crisil Liquid Fund Index	0.33	5.46	6.69	6.93

Macro

- ❖ RBI asks large UCBs to implement system-based asset classification from June 2021
- ❖ Nitin Gadkari calls for global investment in highways, MSME sectors to spur economic growth
- ❖ Tea Board makes country of origin details mandatory to curb illegal imports
- ❖ Govt plans to revise definition of Indian app companies
- ❖ Exporters reel from financial body blow as MEIS is blocked due to paucity of funds

	Q3 FY2020(%)	Q2 FY2020(%)	Q3 FY2019(%)
GDP growth	4.7	4.5	6.6

Commodity Prices				
	Current	Week ago	Month ago	Year ago
Brent crude(\$/bbl)	45.43	45.17	42.72	58.57
Gold (RS/10 gms)	53,758	55,230	49,143	37,799

	Jun - 20 (%)	May - 20 (%)	Year ago (%) (Jun - 19)
CPI	6.09%	*9.28%	3.18
WPI	-1.81	-3.21	2.02
Core Sector Output	-15.00	-23.40	1.20
IIP	-16.60	-34.70	1.30

Global market trends

- ❖ Moderna shares jump on \$1.5 billion US contract for Covid-19 vaccine
- ❖ US leaves tariff on Airbus unchanged at 15%, on other European goods at 25%
- ❖ US budget deficit climbs to record \$2.81 trillion, expected to rise further
- ❖ US economic recovery to be muted until Covid is contained: Fed officials
- ❖ Britain enters recession as GDP tumbles 20.4%, worst in Europe

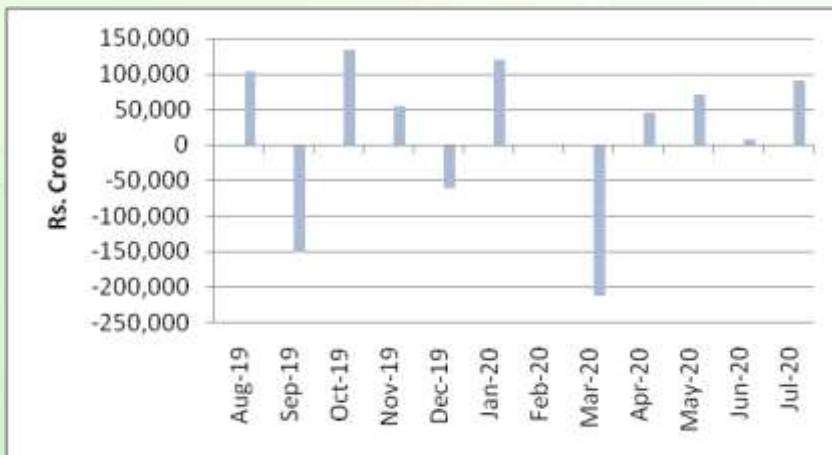
INR vs Global currency		
	Current	Prev close
USD	74.83	74.77
GBP	97.69	97.64
Euro	88.34	87.29
Yen	0.701	0.700
Yuan	10.78	10.77

Global equity benchmark indices returns (%)				
Benchmark	1 Day	1 Week	1 Month	1 Year
FTSE 100	2.04	2.87	3.03	-13.10
Hang Seng	1.42	0.56	-1.88	-2.25
Nikkei 225	0.41	1.46	2.48	10.44
S&P 500	1.40	1.58	6.13	17.22
Shanghai Composite	-0.63	-1.73	-1.89	17.91

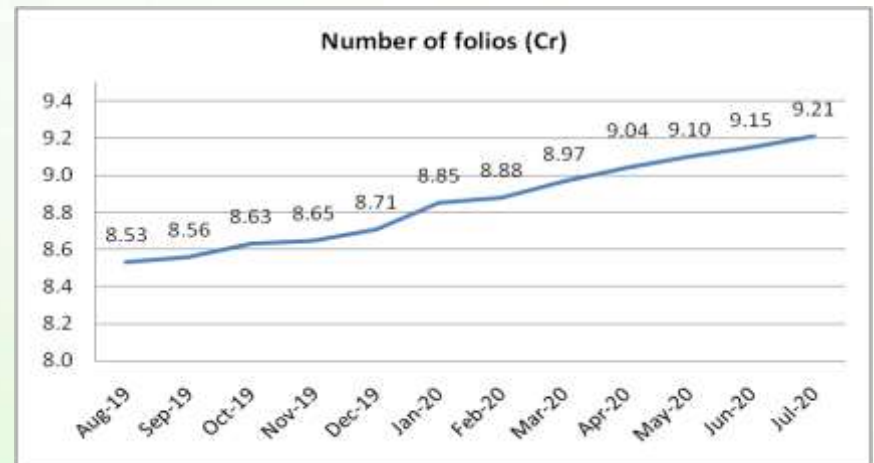
Mutual Fund Roundup

- ❖ Mutual fund inflows in July at Rs 89,813 crore
- ❖ Equity MFs witness outflows after 4 years in July at Rs 2,480 crore amid Covid-19 uncertainty
- ❖ Debt funds witness strong inflows of Rs 91,392 crore
- ❖ Hybrid schemes witness outflows of Rs 7,301 crore

Mutual fund inflows



Mutual fund folio growth



(Data source: NSE, NSDL, FIMMDA, investing.com, tradingeconomics.com, fx-rate.net, ACEMF, AMFI, RBI, equitymaster.com)

(Newsource: Economic Times, Business Standard) (*CPI Food price index)