

Equity Market

- ❖ Sensex ends 362 points higher at 38,025
- ❖ Index VIX declines 1.80% to 23.15
- ❖ Nifty P/E at 30.68, Nifty Midcap 100 P/E at 125.23

S&P CNX Nifty - 200 DMA



Nifty Equity Benchmark Indices

Index	Current Value	% chg	52 wk high	52 wk low
Nifty 50	11200.2	0.89	12430.5	7511.1
Nifty Mid cap 100	15905.2	1.14	18495.9	10750.0
Nifty Small cap 100	5208.3	0.36	6401.1	3202.9
Bank	21642.6	0.62	32613.1	16116.3
Auto	7498.3	0.12	8501.2	4452.2
FMCG	31287.6	1.37	32644.9	22699.1
Pharma	11403.7	1.24	10497.2	6242.9
Realty	204.6	1.09	336.4	160.9

Factors driving the market

- ❖ RBI's announcement of loan restructuring option and hike in gold LTV gave a boost to stock market
- ❖ HDFC up 1.5% on Rs 14K crore QIP, floor price set at of Rs 1,838/share
- ❖ Steel stocks gain on demand hopes, driven largely by exports, Tata Steel top gainer

Nifty Top Gainers/Losers

Index	Value	52 wkhigh	52 wklow
Top Gainers			
Tata Steel	400.5	506.0	250.9
Infosys	972.0	986.5	509.3
GAIL	95.8	148.8	65.0
Top Losers			
Eicher Motors	21958.8	23450.0	12450.1
Shree Cement	21849.9	25355.0	15410.0
Adani Ports	324.1	428.9	203.0

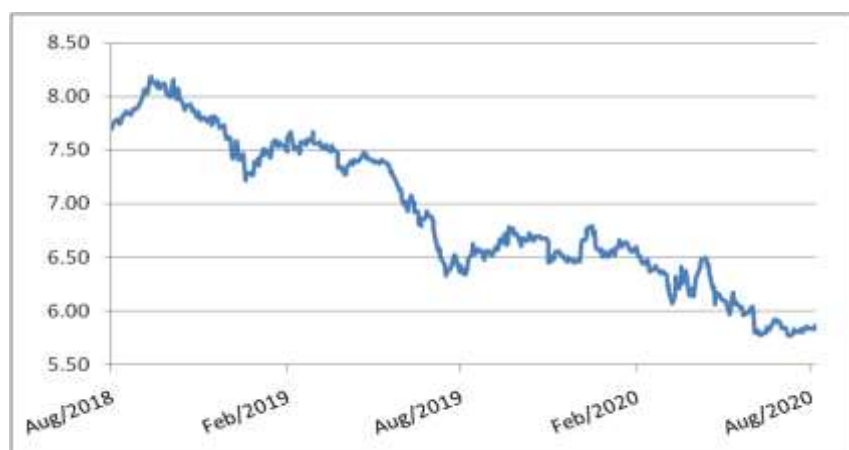
Equity FPI Inflows

Date	Rs Crore		
	Gross Purchases	Gross Sales	Net Investments
06-Aug-20	5981.8	6200.7	(218.9)
05-Aug-20	5450.8	4575.0	875.8
04-Aug-20	13432.5	5908.4	7524.1
Total Jul-2020	119628.6	112065.9	7562.7
Total Jun-2020	170846.4	149014.5	21831.6
Total 2019	1437559.6	1336438.9	101120.8

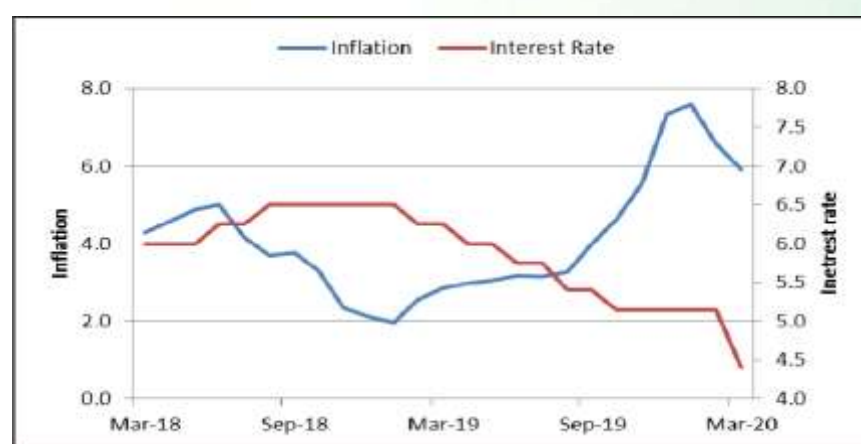
Debt Market

- ❖ RBI keeps repo rate and reverse repo rate at 4% and 3.35% respectively, stance accomodative
- ❖ RBI extends loan restructuring facility for corporate and personal loans
- ❖ RBI enhances loan to value ratio on gold loan to 90% from 75%
- ❖ RBI asks banks not to open current accounts for customers having cash credit, overdraft facilities
- ❖ India Ratings upgrades Eveready's long term credit rating to BB+

10-year G-sec yield



Inflation vs. Interest rate



Debt FPI Inflows

Debt Watch	Percent
Call rate	2.97
Repo rate	4.00
10 Yr Gsec yield	5.86
1-mth CP rate	3.42
3-mth CP rate	3.45
6-mth CP rate	3.97
1 Yr CP rate	4.10
1-mth CD rate	3.22
3-mth CD rate	3.38
6-mth CD rate	3.52
1 Yr CD rate	3.92

Auctions / Money Market Operation		
Date	Description	Amount(Cr)
Aug-07	G-sec auction	--
Aug-07	Total repo	--
Aug-07	Total reverse repo	6,37,700
Aug-07	Marginal standing facility	--
Aug-07	GOI surplus cash balance with RBI	--

Date	Rs Crore		
	Gross Purchases	Gross Sales	Net Investments
06-Aug-20	1131.7	1455.5	(323.9)
05-Aug-20	1211.7	1089.4	122.4
04-Aug-20	35.0	243.0	(208.0)
Total Jul-2020	26380.0	28856.4	(2476.4)
Total Jun-2020	21934.6	23479.5	(1545.0)
Total 2019	392458.9	366578.5	25880.4

Debt Fund Benchmark Indices

Market Indices	1 M (%)	1 Yr (%)	3 Yr (%)	5 Yr (%)
Crisil Composite Bond Fund Index	0.95	11.89	8.53	9.45
Crisil Short Term Bond Fund Index	0.73	10.96	8.37	8.59
Crisil ST Debt Hybrid 75+25 Index	1.62	10.67	7.77	8.54
Crisil Liquid Fund Index	0.33	5.51	6.71	6.95

Macro

- ❖ RBI gives affordable housing, rural lending second boost with Rs 10,000 crore facility
- ❖ Business optimism for July-September quarter slips to record low due to Covid: Report
- ❖ FinMin unlikely to take Covid-hit FY21 as a base for FY22 Budget
- ❖ Worst seems to be over, farm sector to cushion COVID-19 impact on economy: FinMin report
- ❖ July exports reach almost last year's level, said Commerce Minister Piyush Goyal

	Q3 FY2020(%)	Q2 FY2020(%)	Q3 FY2019(%)
GDP growth	4.7	4.5	6.6

Commodity Prices				
	Current	Week ago	Month ago	Year ago
Brent crude(\$/bbl)	45.09	42.94	43.08	58.94
Gold (RS/10 gms)	55,522	53,099	48,168	36,463

	May - 20 (%)	Apr - 20 (%)	Year ago (%) (May - 19)
CPI (Food)	9.28%	--	3.05
WPI	-3.21	--	2.45
Core Sector Output	-23.40	-38.12	3.80
IIP	-34.70	-55.50	3.10

Global market trends

- ❖ Britain pauses on rate, sees unemployment at 2.5 million
- ❖ Bangladesh gets \$202 mn more from World Bank for food security project
- ❖ Donald Trump signs order banning transactions with TikTok parent company
- ❖ US aid begins flowing to Lebanon in wake of deadly Beirut explosion
- ❖ After Google, Facebook asks employees to work from home until July 2021

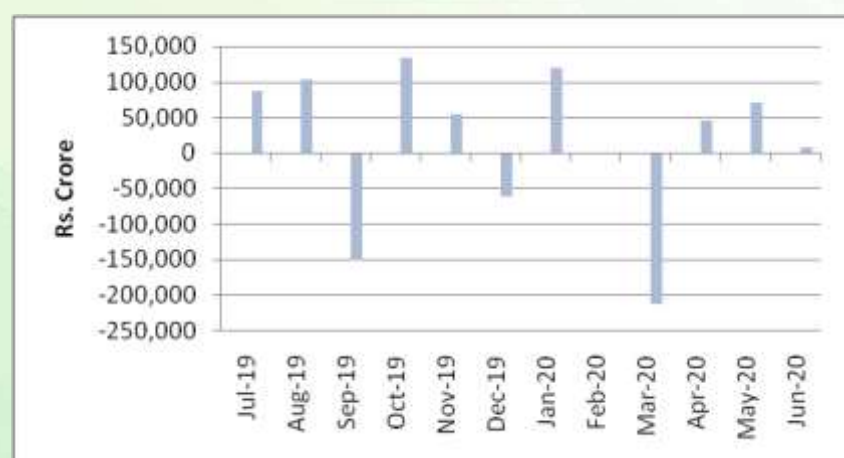
INR vs Global currency		
	Current	Prev close
USD	74.98	74.97
GBP	98.36	98.43
Euro	88.75	88.96
Yen	0.710	0.710
Yuan	10.76	10.77

Global equity benchmark indices returns(%)				
Benchmark	1 Day	1 Week	1 Month	1 Year
FTSE 100	-1.27	0.62	-4.12	-15.96
Hang Seng	-0.69	0.89	-5.35	-4.03
Nikkei 225	-0.43	0.35	-1.30	8.90
S&P 500	0.64	3.17	5.33	16.22
Shanghai Composite	0.26	3.03	1.61	21.92

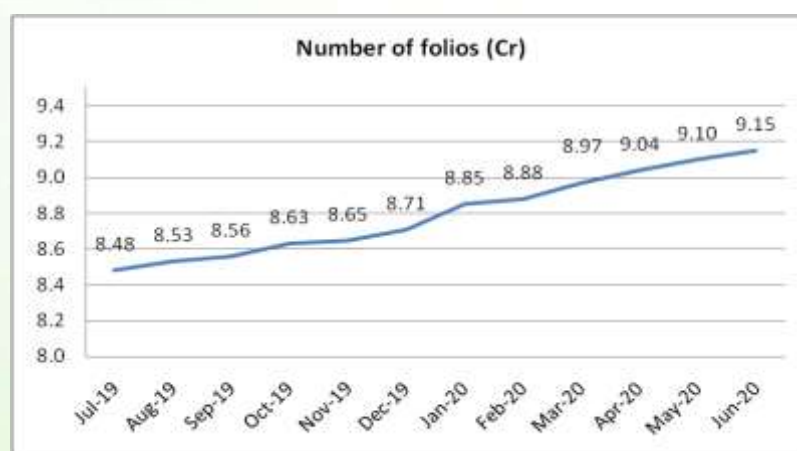
Mutual Fund Roundup

- ❖ Sebi may review curbs on MFs' equity investments
- ❖ Franklin Templeton Mutual Fund may face Sebi heat as audit sees lapses
- ❖ Four Franklin Templeton MF schemes see dip in NAV of up to 4.85% after Future group firms default
- ❖ Sebi mandates MFs to use RFQ platform for 10% of secondary transactions from October 1

Mutual fund inflows



Mutual fund folio growth



(Data source: NSE, NSDL, FIMMDA, investing.com, tradingeconomics.com, fx-rate.net, ACEMF, AMFI, RBI, equitymaster.com)

(Newssource: Economic Times, Business Standard)