

## Equity Market

- ❖ Sensex slips for 4<sup>th</sup> day, ends 667 points lower to 36,940
- ❖ Index VIX rises 3.89% to 25.14
- ❖ Nifty P/E at 29.70, Nifty Midcap 100 P/E at 119.96

### S&P CNX Nifty - 200 DMA



### Nifty Equity Benchmark Indices

Index	Current Value	% chg	52 wk high	52 wk low
Nifty50	10899.9	-1.57	12430.5	7511.1
Nifty Mid cap 100	15476.5	0.03	18495.9	10750.0
Nifty Small cap 100	5065.5	1.10	6401.1	3202.9
Bank	21135.4	-2.33	32613.1	16116.3
Auto	7242.0	-0.52	8501.2	4452.2
FMCG	30785.9	-0.28	32644.9	22699.1
Pharma	11150.5	0.01	10497.2	6242.9
Realty	198.5	-1.24	336.4	160.9

## Factors driving the market

- ❖ Financial stocks tumbled as investors turned cautious ahead of the RBI's monetary policy meeting
- ❖ Auto stocks climb post encouraging July sales numbers, pare gains later; Tata Motors rallies 8% after Q1 nos
- ❖ Bandhan Bank tumbles as Bandhan Financial Holdings cuts stake, sells shares worth around Rs 10,700 crore

### Nifty Top Gainers/Losers

Index	Value	52 wkhigh	52 wklow
<b>Top Gainers</b>			
Tata Motors	111.9	201.7	63.5
Titan	1077.0	1390.0	720.9
Tata Steel	372.0	506.0	250.9
<b>Top Losers</b>			
UPL	452.5	617.8	240.2
IndusInd Bank	504.2	1596.5	235.6
HDFC Life	604.0	647.6	340.0

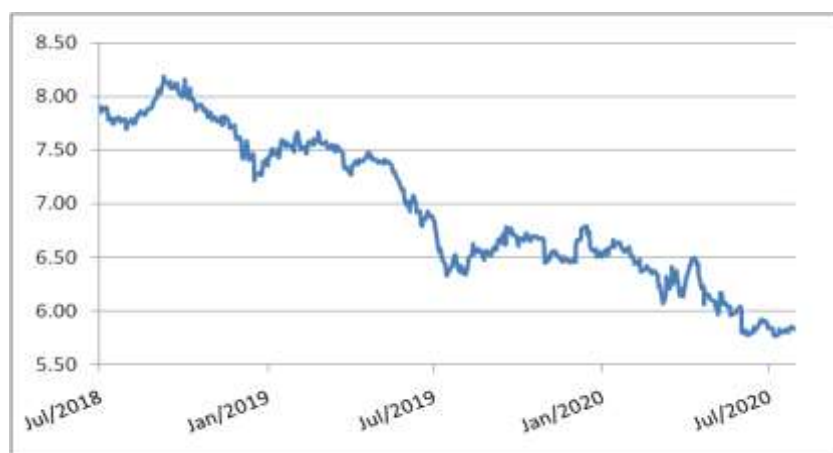
### Equity FPI Inflows

Date	Rs Crore		
	Gross Purchases	Gross Sales	Net Investments
03-Aug-20	4818.6	5734.0	(915.4)
31-Jul-20	7568.1	6146.4	1421.6
30-Jul-20	5651.4	5942.2	(290.9)
Total Jul-2020	119628.6	112065.9	7562.7
Total Jun-2020	170846.4	149014.5	21831.6
Total 2019	1437559.6	1336438.9	101120.8

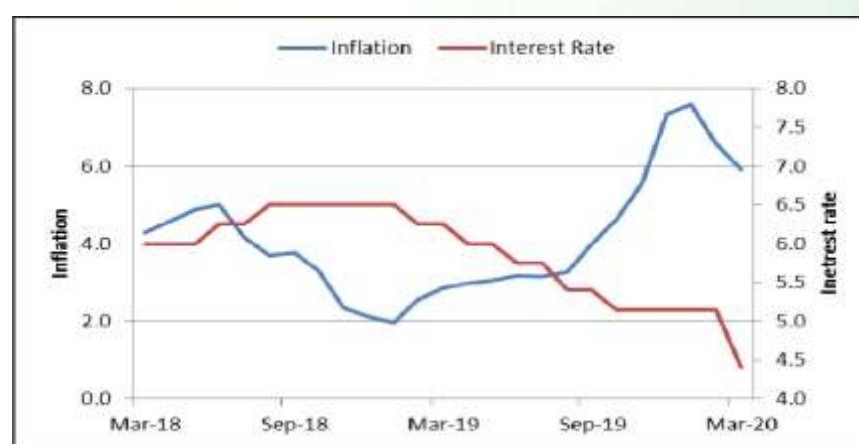
## Debt Market

- ❖ FPIs remain net sellers of Indian debt for fifth straight month in July
- ❖ Vedanta to raise \$1.5 billion via bonds to help fund India company's delisting
- ❖ Renew Power looks to raise funds via dollar bonds, could raise \$500 million
- ❖ Economists at State Bank of India pitch for loan recasts in select sectors
- ❖ Jain Irrigation close to signing debt restructuring

## 10-year G-sec yield



## Inflation vs. Interest rate



## Debt FPI Inflows

Debt Watch	Percent
Call rate	3.19
Repo rate	4.00
10 Yr Gsec yield	5.84
1-mth CP rate	3.35
3-mth CP rate	3.45
6-mth CP rate	3.97
1 Yr CP rate	4.10
1-mth CD rate	3.22
3-mth CD rate	3.38
6-mth CD rate	3.53
1 Yr CD rate	3.92

Auctions / Money Market Operation		
Date	Description	Amount(Cr)
Aug-04	G-sec auction	--
Aug-04	Total repo	--
Aug-04	Total reverse repo	6,81,241
Aug-04	Marginal standing facility	--
Aug-04	GOI surplus cash balance with RBI	--

Date	Rs Crore		
	Gross Purchases	Gross Sales	Net Investments
03-Aug-20	804.7	185.1	619.6
31-Jul-20	843.0	1547.3	(704.3)
30-Jul-20	524.2	707.0	(182.8)
Total Jul-2020	26380.0	28856.4	(2476.4)
Total Jun-2020	21934.6	23479.5	(1545.0)
Total 2019	392458.9	366578.5	25880.4

## Debt Fund Benchmark Indices

Market Indices	1 M (%)	1 Yr (%)	3 Yr (%)	5 Yr (%)
Crisil Composite Bond Fund Index	1.18	12.07	8.57	9.48
Crisil Short Term Bond Fund Index	0.85	10.96	8.38	8.60
Crisil ST Debt Hybrid 75+25 Index	1.38	9.86	7.59	8.46
Crisil Liquid Fund Index	0.32	5.52	6.71	6.95

## Macro

- ❖ E-way bill generation higher in July at 48.3 million; still lower than pre-Covid levels
- ❖ Demand for work under the rural employment guarantee scheme falls sharply in July
- ❖ GST mop-up in July at Rs 87,422 crore, slips from June collections
- ❖ Global manufacturers raise issue of multiple approvals for industrial projects
- ❖ Real-time monitoring of Rs 1 lakh crore Agriculture Infrastructure fund in works

	Q3 FY2020(%)	Q2 FY2020(%)	Q3 FY2019(%)
GDP growth	4.7	4.5	6.6

Commodity Prices				
	Current	Week ago	Month ago	Year ago
Brent crude(\$/bbl)	43.81	43.41	42.80	61.31
Gold (RS/10 gms)	53,615	52,260	48,227	36,289

	May - 20 (%)	Apr - 20 (%)	Year ago (%) (May - 19)
CPI (Food)	9.28%	--	3.05
WPI	-3.21	--	2.45
Core Sector Output	-23.40	-38.12	3.80
IIP	-34.70	-55.50	3.10

## Global market trends

- ❖ Microsoft, Apple lift Wall Street as investors await stimulus; Nasdaq up 1%
- ❖ Trump bans H1-B visa technology workers on federal government contracts
- ❖ US Treasury projects record Q3 borrowing of \$947 billion
- ❖ Google owner Alphabet issues record \$10 billion bond at lowest-ever price
- ❖ Global remittances may lose \$108.6 bn in 2020; South Asia to suffer most

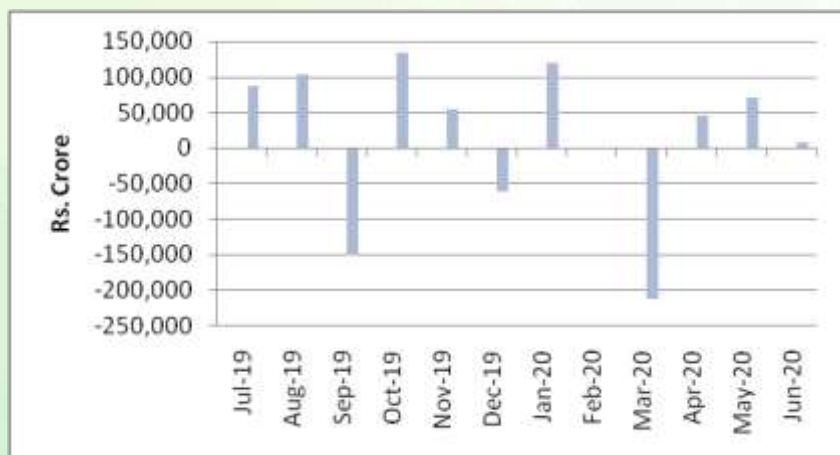
INR vs Global currency		
	Current	Prev close
USD	75.17	75.11
GBP	98.32	98.26
Euro	88.49	88.36
Yen	0.709	0.708
Yuan	10.77	10.76

Global equity benchmark indices returns(%)				
Benchmark	1 Day	1 Week	1 Month	1 Year
FTSE 100	2.29	-1.18	-5.48	-18.55
Hang Seng	-0.56	-0.59	-3.61	-9.14
Nikkei 225	2.24	-2.29	-0.50	5.26
S&P 500	0.72	1.70	5.26	12.37
Shanghai Composite	1.75	5.08	6.82	17.44

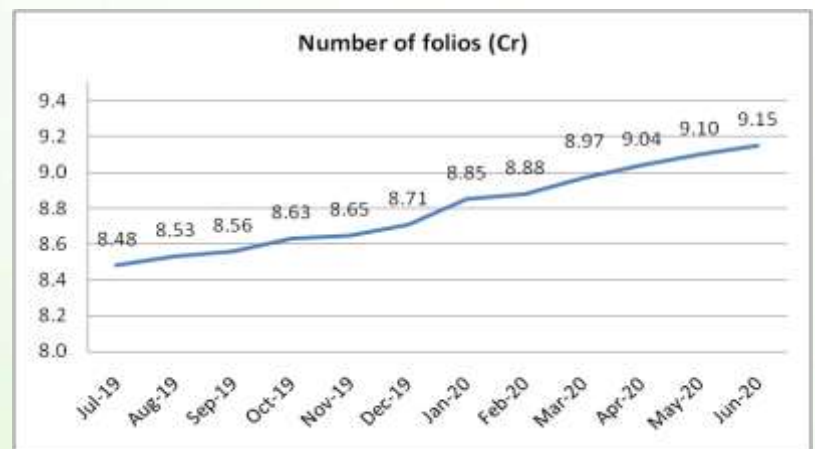
## Mutual Fund Roundup

- ❖ Sebi may review curbs on MFs' equity investments
- ❖ Franklin Templeton Mutual Fund may face Sebi heat as audit sees lapses
- ❖ Four Franklin Templeton MF schemes see dip in NAV of up to 4.85% after Future group firms default
- ❖ Sebi mandates MFs to use RFQ platform for 10% of secondary transactions from October 1

### Mutual fund inflows



### Mutual fund folio growth



(Data source: NSE, NSDL, FIMMDA, investing.com, tradingeconomics.com, fx-rate.net, ACEMF, AMFI, RBI, equitymaster.com)

(Newsource: Economic Times, Business Standard)