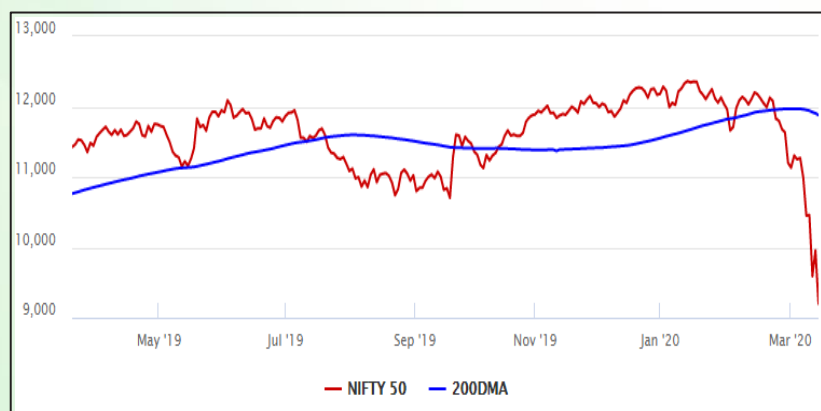


## Equity Market

- ❖ Market selloff resumes, Sensex tumbles 2713 points to 31,390
- ❖ India VIX jumps 16.07% to 58.88
- ❖ Nifty P/E at 20.93, Nifty Midcap 100 P/E at 20.43

### S&P CNX Nifty - 200 DMA



### Nifty Equity Benchmark Indices

Index	Current Value	%chg	52 wkhigh	52 wklow
Nifty 50	9197.4	-7.61	12430.5	8555.2
Nifty Mid cap 100	13695.3	-6.25	18495.9	12715.0
Nifty Small cap 100	4418.9	-6.41	6822.5	3978.5
Bank	23101.2	-8.21	32613.1	21351.7
Auto	5843.7	-5.47	9059.4	5265.8
FMCG	24707.7	-5.72	32644.9	23420.4
Pharma	6959.4	-4.25	9578.4	6242.9
Realty	216.2	-8.35	336.4	203.4

## Factors driving the market

- ❖ US Fed's surprise rate cut fails to impress investors
- ❖ Yes Bank shares zoom on rescue plan, RBI's announcement of lifting moratorium
- ❖ IndusInd Bank top loser on concerns about the bank's health

### Nifty Top Gainers/Losers

Index	Value	52 wkhigh	52 wklow
<b>Top Gainers</b>			
Yes Bank	37.1	286.0	56.7
--	--	--	--
--	--	--	--
<b>Top Losers</b>			
IndusInd Bank	656.3	1834.4	551.1
JSW Steel	183.1	314.0	175.2
Vedanta	74.9	195.1	68.9

### Equity FPI Inflows

Date	Rs Crore		
	Gross Purchases	Gross Sales	Net Investments
16-Mar-20	8436.6	15177.6	(6741.0)
13-Mar-20	11425.5	13227.6	(1802.1)
12-Mar-20	9688.7	13172.4	(3483.7)
Total Feb-2020	127755.2	125935.4	1819.8
Total Jan-2020	116261.5	104139.0	12122.6
Total 2019	1437559.6	1336438.9	101120.8

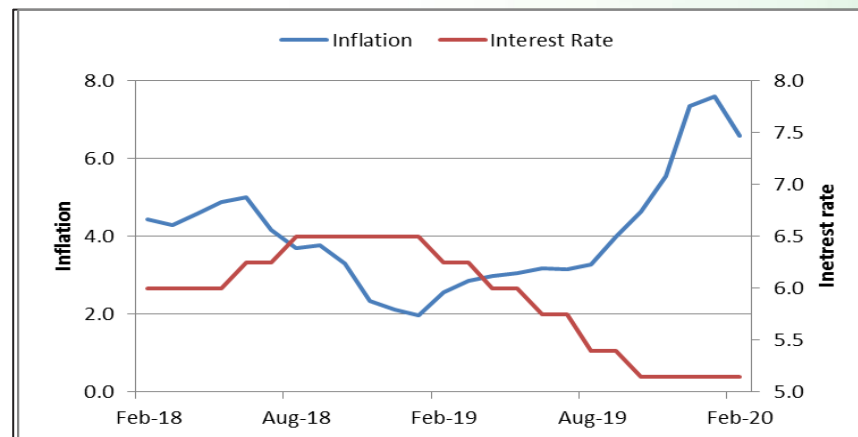
## Debt Market

- ❖ RBI announces Long Term Repo Operation in multiple tranches of up to Rs 1 trillion
- ❖ Moody's upgrades Yes Bank rating by a notch, outlook positive
- ❖ MPC will take call on rate cut; all options on the table to counter coronavirus blow, says Shaktikanta Das
- ❖ YES Bank crisis: Indiabulls Housing moves court seeking relief on AT1 bonds

## 10-year G-sec yield



## Inflation vs. Interest rate



## Debt FPI Inflows

Debt Watch	Percent
Call rate	4.72
Repo rate	5.15
10 Yr Gsec yield	6.21
1-mth CP rate	5.77
3-mth CP rate	5.60
6-mth CP rate	5.60
1 Yr CP rate	5.97
1-mth CD rate	5.14
3-mth CD rate	5.50
6-mth CD rate	5.79
1 Yr CD rate	5.80

Auctions / Money Market Operation		
Date	Description	Amount(Cr)
Mar-17	G-sec auction	--
Mar-17	Total repo (outstanding)	--
Mar-17	Total reverse repo (outstanding)	2,81,556
Mar-17	Marginal standing facility (outstanding)	273
Mar-17	GOI surplus cash balance with RBI	--

Date	Rs Crore		
	Gross Purchases	Gross Sales	Net Investments
16-Mar-20	316.9	6794.8	(6477.9)
13-Mar-20	855.6	3844.3	(2988.8)
12-Mar-20	1702.8	9653.2	(7950.4)
Total Feb-2020	48106.3	46009.6	2096.8
Total Jan-2020	25926.9	37574.9	(11648.0)
Total 2019	392458.9	366578.5	25880.4

## Debt Fund Benchmark Indices

Market Indices	1 M (%)	1 Yr (%)	3 Yr (%)	5 Yr (%)
Crisil Composite Bond Fund Index	-0.19	12.22	8.14	8.61
Crisil Short Term Bond Fund Index	-0.35	9.18	7.66	8.10
Crisil ST Debt Hybrid 75+25 Index	-6.45	1.95	6.10	7.03
Crisil Liquid Fund Index	0.42	6.48	6.96	7.23

## Macro

- ❖ WPI-based inflation eases to 2.26% in February against 3.1% in Jan
- ❖ RBI announces US dollar sell/buy swap on March 23 worth \$2 billion
- ❖ Indian macroeconomic outlook vulnerable to disruption of trade with China : Finance Ministry on coronavirus
- ❖ Lok Sabha passes Appropriation Bill
- ❖ Direct tax collection contracts in April-February period, at 8.13 lakh crore

	Q3 FY2020(%)	Q2 FY2020(%)	Q3 FY2019(%)
GDP growth	4.7	4.5	6.6

Commodity Prices				
	Current	Week ago	Month ago	Year ago
Brent crude(\$/bbl)	29.51	33.44	57.32	67.15
Gold (RS/10 gms)	39,867	43,750	40,728	31,725

	Jan-2020 (%)	Dec-2019 (%)	Year ago (%) (Jan-2019)
CPI	7.59	7.35	1.97
WPI	3.10	2.59	2.76
Core Sector Output	2.20	1.30	2.10

## Global market trends

- ❖ UK govt closes down social life as coronavirus outbreak accelerates
- ❖ Twenty more countries seek aid from IMF amid coronavirus outbreak
- ❖ Russia to launch \$4 bn 'anti-crisis' fund to shield economy from Covid-19
- ❖ Donald Trump says coronavirus pandemic likely to end in US by July
- ❖ Oil slumps below \$30 as coronavirus spreads, OPEC rancor remains elevated

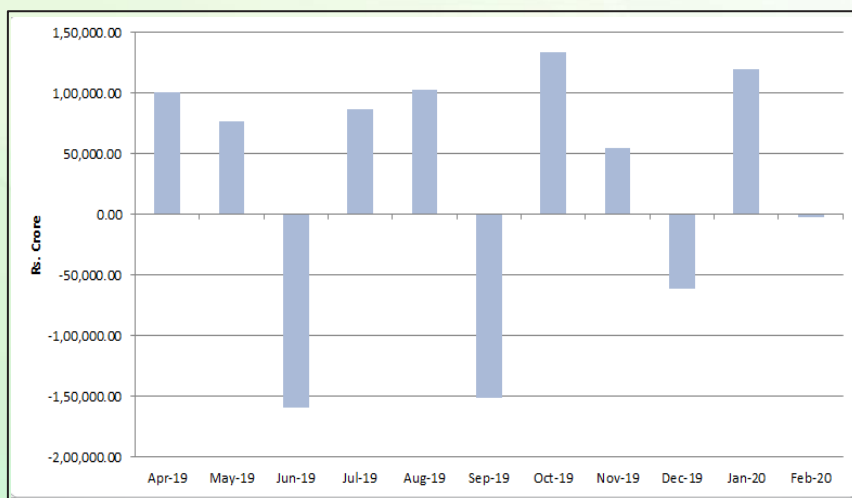
INR vs Global currency		
	Current	Prev close
USD	73.94	74.20
GBP	90.60	90.92
Euro	82.65	82.97
Yen	0.69	0.70
Yuan	10.57	10.61

Global equity benchmark indices returns(%)				
Benchmark	1 Day	1 Week	1 Month	1 Year
FTSE 100	-4.01	-13.66	-30.48	-28.74
Hang Seng	-4.03	-7.89	-17.08	-20.50
Nikkei 225	-2.46	-13.69	-28.22	-20.74
S&P 500	-7.09	-12.03	-23.89	-20.08
Shanghai Composite	-3.40	-1.90	-1.01	-4.45

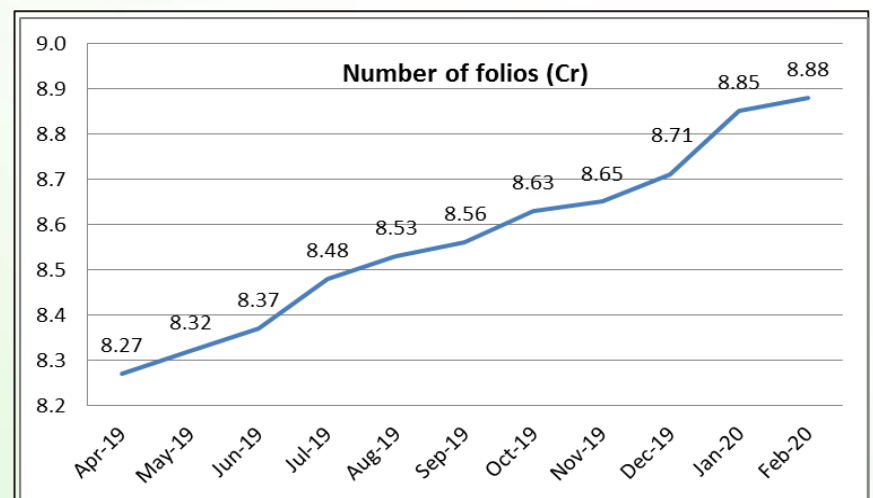
## Mutual Fund Roundup

- ❖ Mutual funds to approach Sebi on 3-year lock-in for Yes Bank shareholders
- ❖ Domestic mutual funds continue to buy equities amid market volatility
- ❖ Equity Fund sees net inflows of Rs 10,795 crore, a 11-month high
- ❖ Liquid funds hit with outflows of Rs 43,825 crore

### Mutual fund inflows



### Mutual fund folio growth



(Data source: NSE, NSDL, FIMMDA, investing.com, tradingeconomics.com, fx-rate.net, ACEMF, AMFI, RBI, equitymaster.com)

(News source: Economic Times, Business Standard)